

# Mid Valley Trails Committee Agenda

September 28<sup>th</sup> 2023

7:30am

1340 Main Street Carbondale, CO 81623 – RFTA Office

---

## INVITED ATTENDEES

- George Trantow – MVTC Chair
- Phillip Ring – MVTC Treasurer
- Alan Luu - MVTC Member
- Perry Kleespies – MVTC Member
- Temple Glassier – MVTC Project Manger
- Rebecca Schild – Roaring Fork Outdoor Volunteers
- Mike Pritchard, Roaring Fork Mountain Bike Association
- Karin Offield, Roaring Fork Valley Horse Council
- Michelle Thibeault, Town of Basalt Planning Director
- Chris Beiser, Town of Basalt
- Angela Henderson, RFTA
- Brett Meredith, RFTA
- Jud Lang, RFTA
- Abbey Pascoe, RFTA
- Sarah Faichney, RFTA

## AGENDA

1. Review and approval of previous month's minutes
2. Updates from MVTC Partnerships
  - Roaring Fork Mountain Bike Association (RFMBA) Update – Mike Pritchard
    - Updates on Upper and Middle section of the Crown Royale Trail
  - Roaring Fork Valley Horse Council (RFVHC) Update – Karin Offield
    - Language for approval consideration by the MVTC for the support of RFVHC and the Glassier Family Community Trail. See attachments.
    - The funding for work on Mid Valley Trails for 2024, the RFVHC is asking for a place holder of \$5000.00. It will be used for Part Two of the Trails Safe Passing Plan sign installation for Basalt Mountain and Glassier Trail Heads and a tentative project with RFOV for the east side of work on the Light Hill Trail, which is under discussion. Anything on Glassier is typically funded by PC OST, so a partnership with RFOV is also a possibility and is being pursued
  - Basalt Parks, Open Space and Trails (POST) Update – Chris Beiser
    - POST 2024 Work Plan (See attachment E1-4)
    - Opportunities for MVTC to participate

- Roaring Fork Outdoor Volunteers (RFOV) – Rebecca Schild
  - Nancy's Path Update

### 3. New Business

- Administration duties
  - Abbey Pascoe will be taking over administration duties starting in the New Year for the MVTC.
  - First meeting of the year will be scheduled in March.
- Temple Glassier
  - Recruitment
  - Stage Trail Project
  - El Jebel to Basalt Mountain Connection

### 4. Action Items

September 12, 2023 MVTC Update for September Meeting:

Here is the statement that I would like the MVTC committee to consider adopting about the Glassier Open Space and our proposed trail – the Glassier Family Community Trail. I have also included a draft map of what we envision for the loop trails that are possible. More familiarity and history with the leased fields is still needed, and maybe the committee can help us.

The objections of PC OST against our proposal may be in their thinking that the two groups – hikers and horseback riders don't mix with the agricultural lessees. Globally, riding horses around farm fields has been acceptable for centuries. We think Glassier Open Space is perfect for this mixed use.

One other point about the Glassier Equestrian Trail that Gary Tenenbaum has reminded us about - many times - is that during the review of the every 5 Year Glassier Open Space Management Plan - if they say equestrians don't use the Glassier Equestrian Trail - with enough public support – other users may want that trail for an up or down access to the Crown, taking away the horse and hiker use completely. With Nancy's Path unreliable we believe this outcome is less likely, so we hope to access the Crown, on the Glassier Equestrian Trail, and use our amazing truck and trailer parking lot for decades and decades into the future. So, whatever the Rfvhc can do on Glassier Open Space for equestrian's use is a big win for us. Please review the statement below:

**Nancy's Path: Proposed Statement with MVTC on behalf of the support of the Rfvhc**

After decades of use, the current members of the Mid-Valley Trails Committee agree with the Rfvhc point of view that Nancy's Path access trail lies in an unstable valley, and weather conditions often prohibit the safe use of this equestrian and hiking trail that leads up to the Crown.

We agree that MVTC funding trail improvements of Nancy's Path could be better spent on an alternative trail for the Mid Valley on the Glassier Open Space. We have learned that the Rfvhc has put forward a proposal to PC OST to build a loop trail tentatively named the Glassier Family Community Trail for Equestrians and Hikers. We like this idea, and we are encouraging the Rfvhc to pursue this trail option with PC OST for the benefit of horseback riders and hikers, especially families with children.

According to the Rfvhc trail description, the trail has potential to become two loops, which would utilize the new PC OST access/connector trail from the Glassier parking lot to the smaller sized Nancy's Path parking lot being built in the summer of 2023 and spring of 2024. With several added sections of the trail, around the perimeter of the agricultural fields, inside the meadows on the two track maintenance roads, this Glassier Family Community Trail could become two loops suitable for all levels of equestrians and hikers with families, due to the gentle flat terrain. The leaseholders and the hiking and horseback rider recreational users of Glassier Open Space would be allowed to share the maintenance roads.

See Draft of Map below:

Map 12. Recommended Trail Connection to Nancy's Path



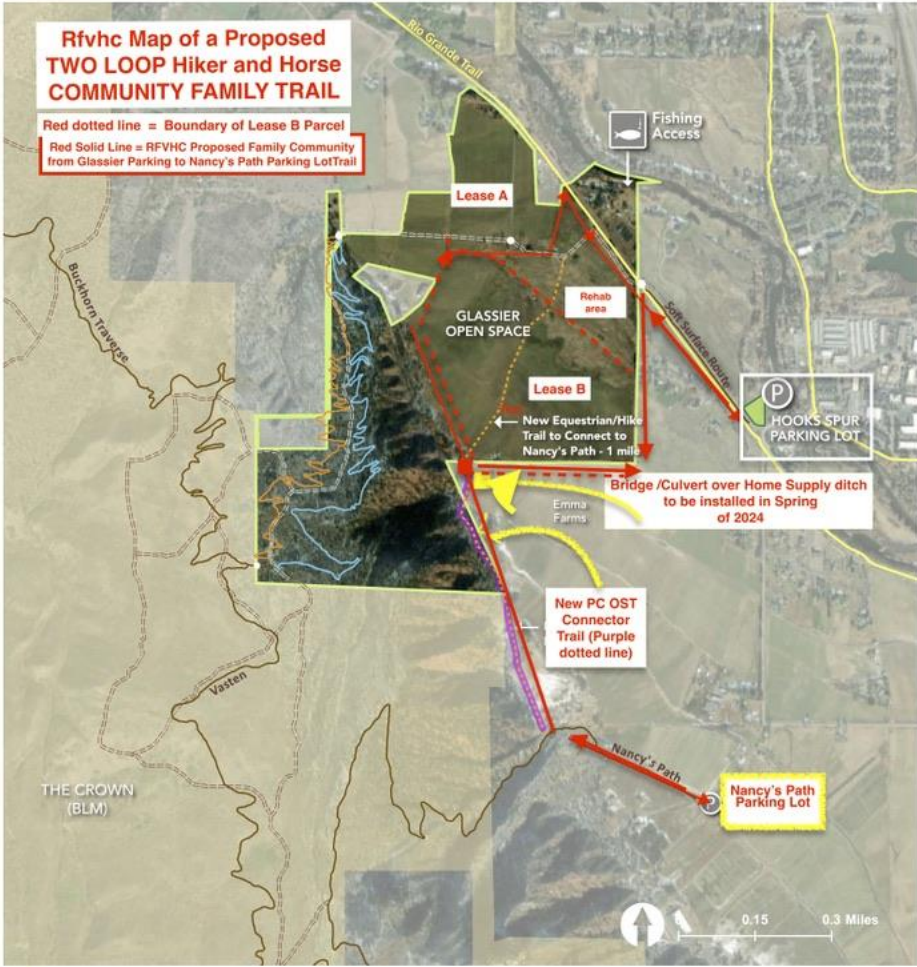
- |                                      |                     |
|--------------------------------------|---------------------|
| Glassier Open Space                  | <b>Other Trails</b> |
| BLM                                  | Double Track        |
| <b>Glassier Trails</b>               | Single Track        |
| Glassier Access Route / Double Track | Multi-use Path      |
| Glassier Bike/Hike Trail             |                     |
| Glassier Equestrian/Hike Trail       |                     |
| Nancy's Path Connection              |                     |
| Emma Farms Recreation Easement       |                     |

This map/drawing is a graphical representation of the features depicted and is not a legal representation. Accuracy is not guaranteed.



See DRAFT Map BELOW:

Map 12. Recommended Trail Connection to Nancy's Path



- Glassier Open Space
- BLM
- Glassier Trails**
- Glassier Access Route / Double Track
- Glassier Bike/Hike Trail
- Glassier Equestrian/Hike Trail
- Nancy's Path Connection
- Emma Farms Recreation Easement
- Other Trails**
- Double Track
- Single Track
- Multi-use Path

This map/drawing is a graphical representation of the features depicted and is not a legal representation. Accuracy is not guaranteed.



# POST

2024 Work Plan Draft



# Parks Open Space & Trails

1. Jason Groves
2. Julie Kolar
3. Paul Hilts
4. Sarah Shaw
5. Reid Haughey
6. Ligia Bonilla
7. Aimee Beazley



