

Mid Valley Trails Committee Agenda

March 23rd 2023

7:30am

RFTA Office – 1340 Main St Carbondale, CO 81623

Webex link: <https://rfta.webex.com/rfta/j.php?MTID=m8735889564752c8bfb6765869049936b>

INVITED ATTENDEES

- George Trantow – MVTC Chair
- Phillip Ring – MVTC Treasurer
- Brian Schaefer – MVTC Member
- Alan Luu - MVTC Member
- Temple Glassier- MVTC Project Manger
- Rebecca Schild – Roaring Fork Outdoor Volunteers
- Michelle Daniels – Roaring Fork Outdoor Volunteers
- Mike Pritchard, Roaring Fork Mountain Bike Association
- Karin Offield, Roaring Fork Valley Horse Council
- Michelle Thibeault, Town of Basalt Planning Director
- Jill Klosterman, Eagle County
- Angela Henderson, RFTA
- Brett Meredith, RFTA
- Abbey Pascoe, RFTA
- Sarah Faichney, RFTA
- Jud Lang, RFTA

AGENDA

1. Review and approval of February Minutes.
2. Updates from Partnerships with MVTC
 - RFMBA Update – Mike Pritchard
 - Crown Trail Project Update. Reference image A1.
 - Seasonal Trail Crew Program Update
 - RFBVHC Update – Karin Offield
 - Asking for MVTC, RFTA, RFMBA, RFOV, student groups and trail association to use the Trails Safe Passing Plan (TSPP).
 - Here is the link for the power point presentation on Trails Safe Passing Plan if you would like more information elcr.org/wp-content/uploads/2022/07/TRAILS-SAFE-PASSING-PLAN-7-6-22-Powerpoint-Accessibility-Approved-1.pdf

- Here is the link to sign up to use the sign <https://www.rfvhorsecouncil.org/trailassociatelandmanagementteam-membership-form.html>
- Here is the link for final graphics, vector signs and QR code. <https://www.rfvhorsecouncil.org/trails-safe-passing-plan-tspp.html>
- Here is the link to the American Trails webinar happening on March 30th 2023 if you're interested in learning further about the Trails Safe Passing Plan. <https://www.americantrails.org/training/the-trails-safe-passing-plan-stop-speak-and-stand-back>

➤ Basalt POST Update

- Trail connection between Mid Valley Center to Willits Lane Reference image A2.
- POST Maintenance and Financial Long Range Plan progress
- Willits Lane RFP. Reference image A3.
- Basalt's Pursuit of Certification as a Bike Friendly Community
- Update on Midland Ave Streetscape Project

3. New Business

➤ Temple Glassier

- Potential new member – Perry Kleespies

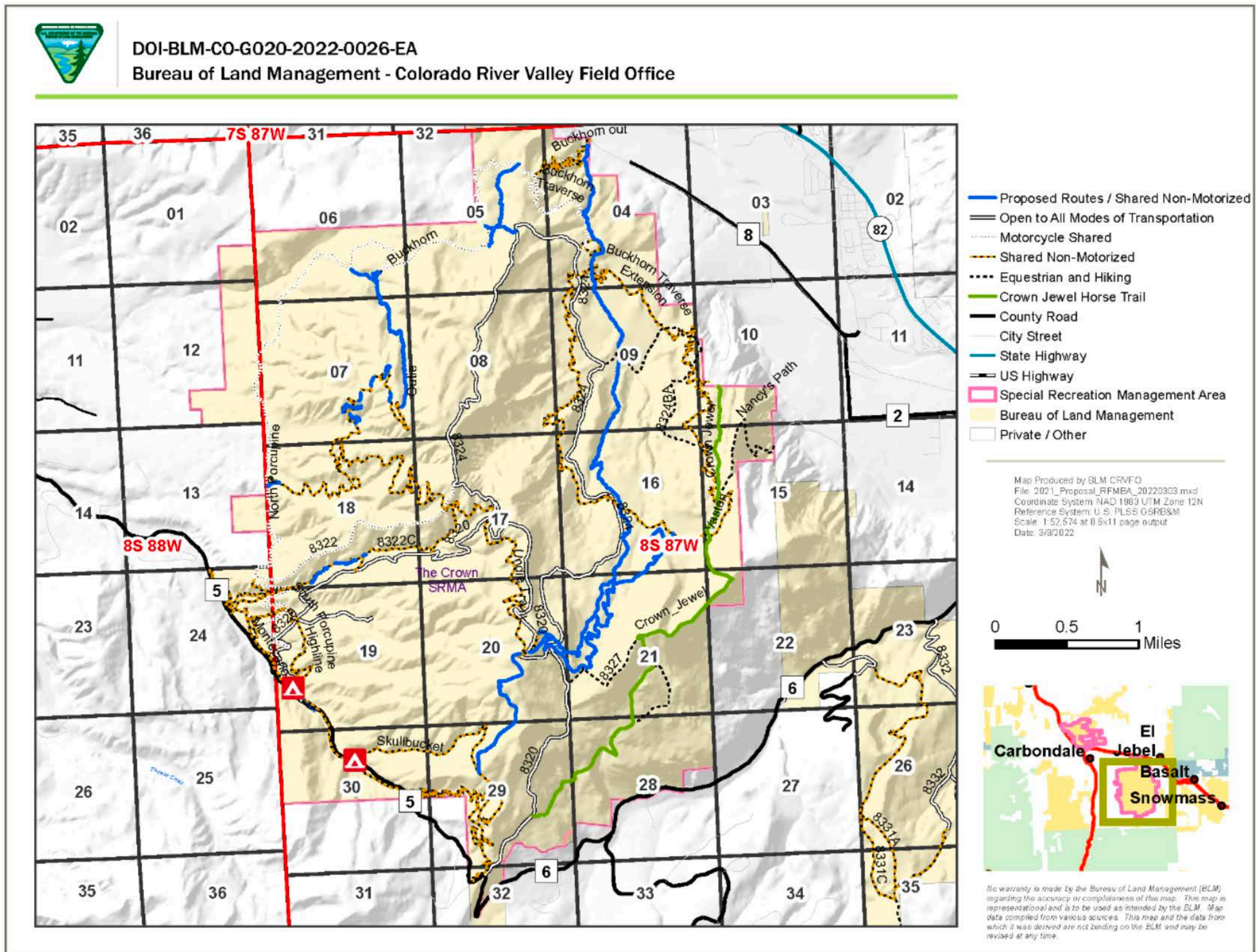
➤ George Trantow

- Recruiting more members
- Discuss El Jebel to Missouri Heights Trail Connection Project.
 - Review access points. Reference image A4, A5, A6, A7.
 - Schedule a terrain walk through this spring.

➤ Sarah Faichney

- Housekeeping items for the committee.
 - Rules for presenting and participating.
 - RFTA is in the process of creating a recruitment flyer.
 - All Mid Valley Trails meeting agenda's minutes and dates are posted here: [Rio Grande Trail Documentation](#).

Map 1. Overview of the Crown SRMA and the proposed trail additions.





**EXISTING
CONDITIONS**

ASPENBASALT TRAILER PARK

Significant pedestrian use to close proximity to Hwy 82

WILLITS DESIGN CENTER

Service truck destination, commercial sector of Basalt's economy

DUROUX PARK

Rafting put-in destination, pocket park size, Hooks Lane bridge

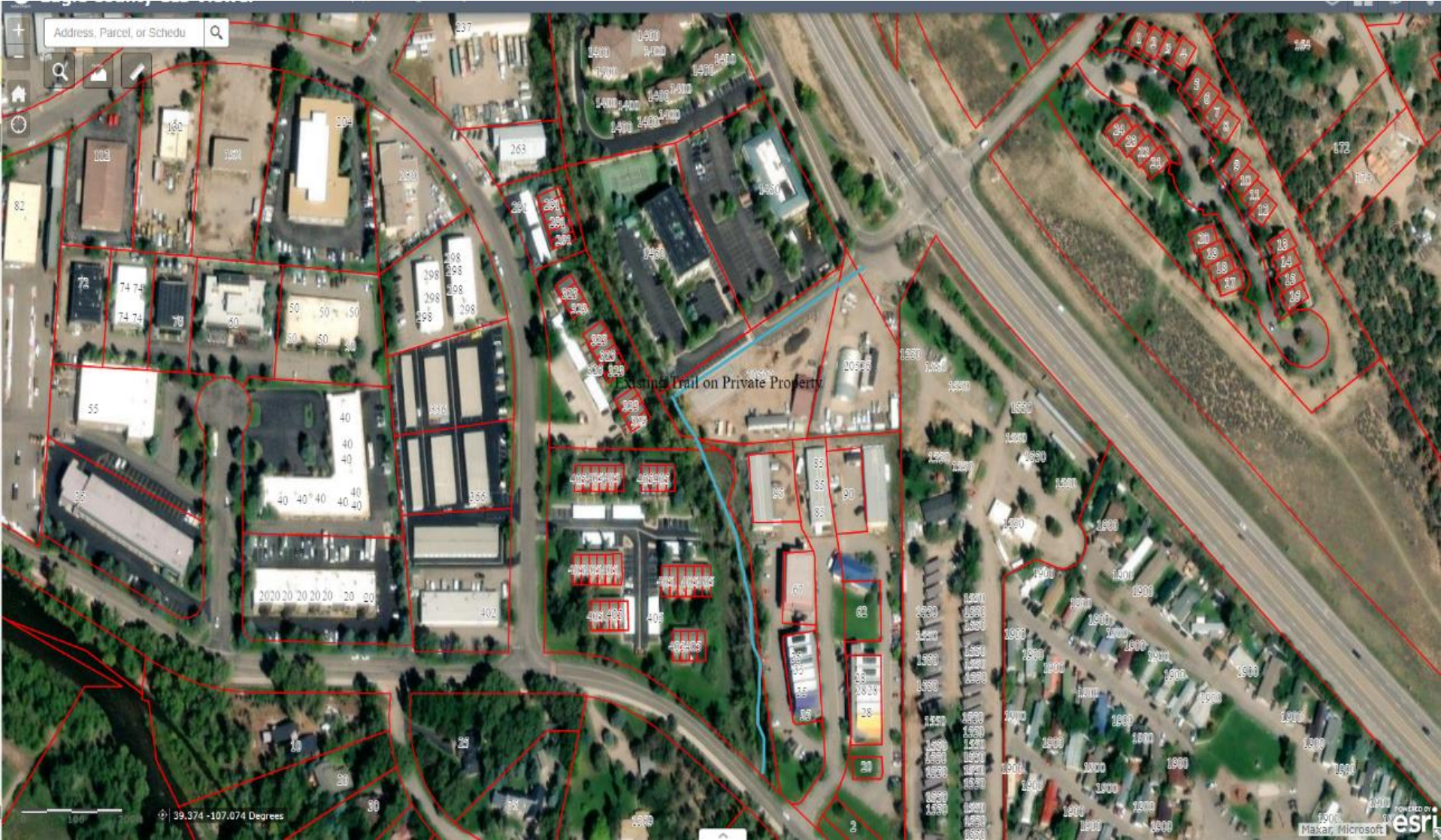
WILLITS PUD

Density and uses increasing including new childcare facility, health clinic and residential

ROUND-A-BOUT

End of trail connection to Highway 82; unclear trail connections to Crown Mnt Park and area businesses

Existing Trail on Private Property





rfmba

ROARING FORK
Mountain Bike Association

El Jebel to Basalt Mountain Trails Connection

This map was created by the mid valley trails committee and RFMBA.

We seek approvals from USFS, BLM, Eagle County and El Jebel Tree Farm for a mountain bike route connection between El Jebel and the Basalt Mountain trail system.

1:36,000
1 inch = 3,000 feet

- Proposed MTB Route
- BLM Citizen Recommended Trails (Crown)
- Trails- Aspen/ Pitkin GIS
- Cross country Trails (Aspen/Pitkin GIS)
- Roads (mostly paved)
- WRNF TMP Alt. G (symbology by WRNF)
- Licensed Motorized Only
- Licensed and Unlicensed Allowed
- Motorized Vehicles (under 50' w)
- Two wheeled Vehicles (Motorcycles)
- Mechanized (Bicycles)
- Foot and Horse (animal)
- Managed under special use permit
- Closed to the public
- County Line
- White River National Forest Lands
- Wilderness within WRNF
- BLM Ownership Data**
- Bureau of Land Management
- Private Land (no color)
- State Land
- Parks- Aspen/Pitkin
- Smugler PRA (expanded)
- Smugler Mountain Open Space

Draft v1

rfmba.org

RFMBA's mission is to create and sustain the best possible mountain bike trail system and experience in the Roaring Fork Valley.

- RFMBA**
- Advocacy
 - Planning
 - Trails
 - Education

Data Information:
This map represents data and information from many sources; errors and omissions may exist. RFMBA makes no claims to the accuracy of these maps for any kind of navigation.

Cartography by: Pablo Siveira
pablo.ca.co@gmail.com 530.864.7492

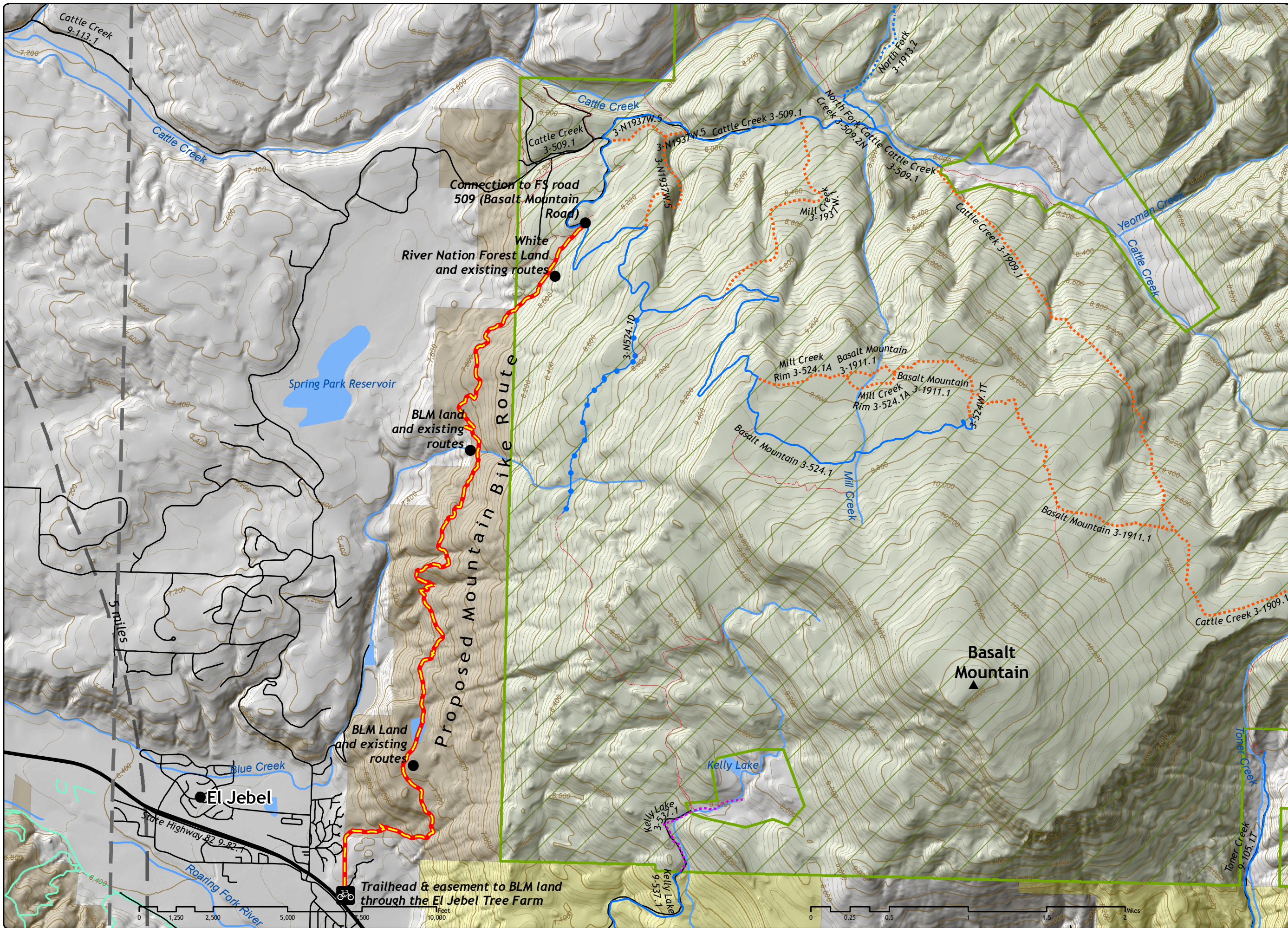
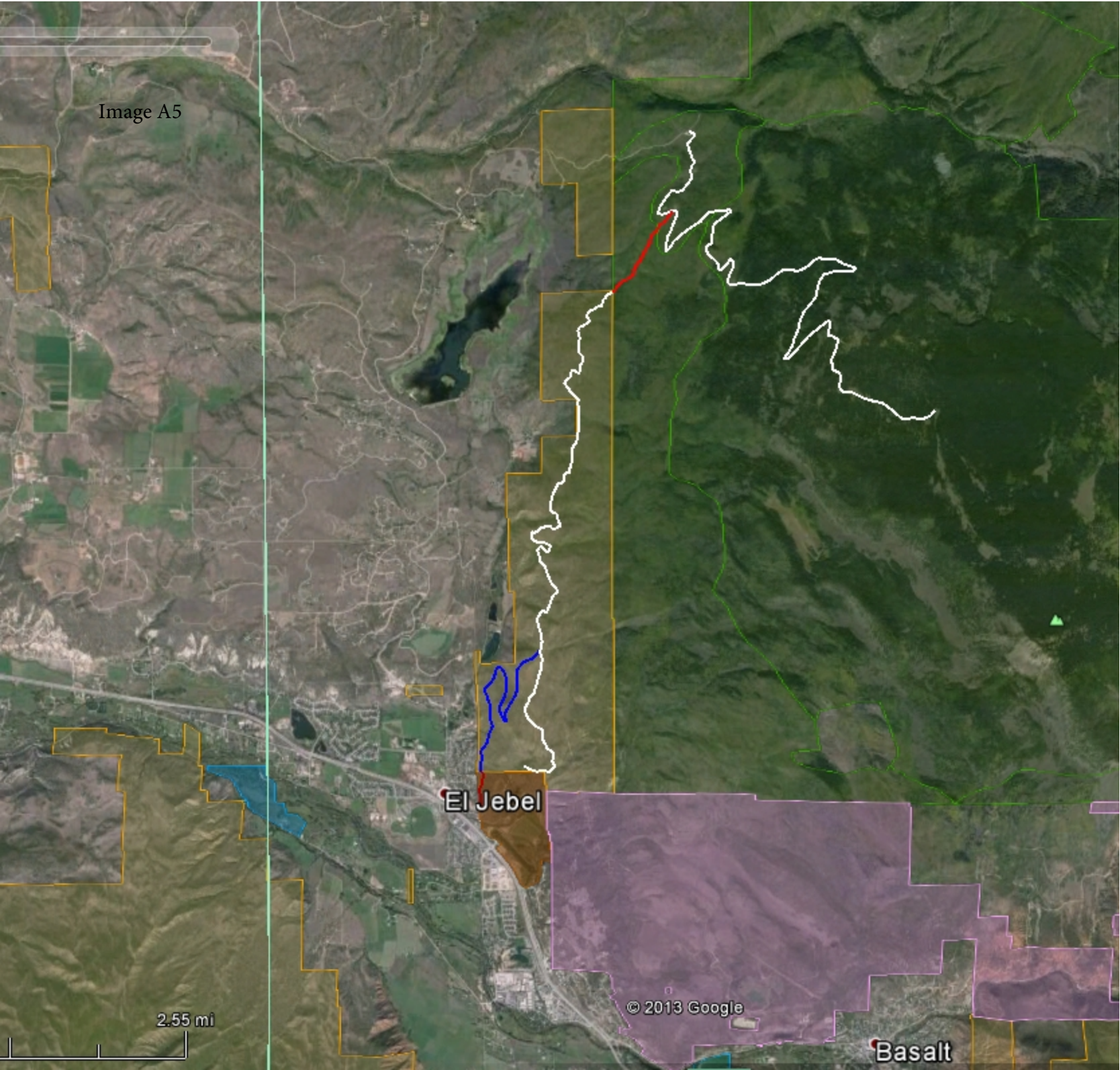


Image A5

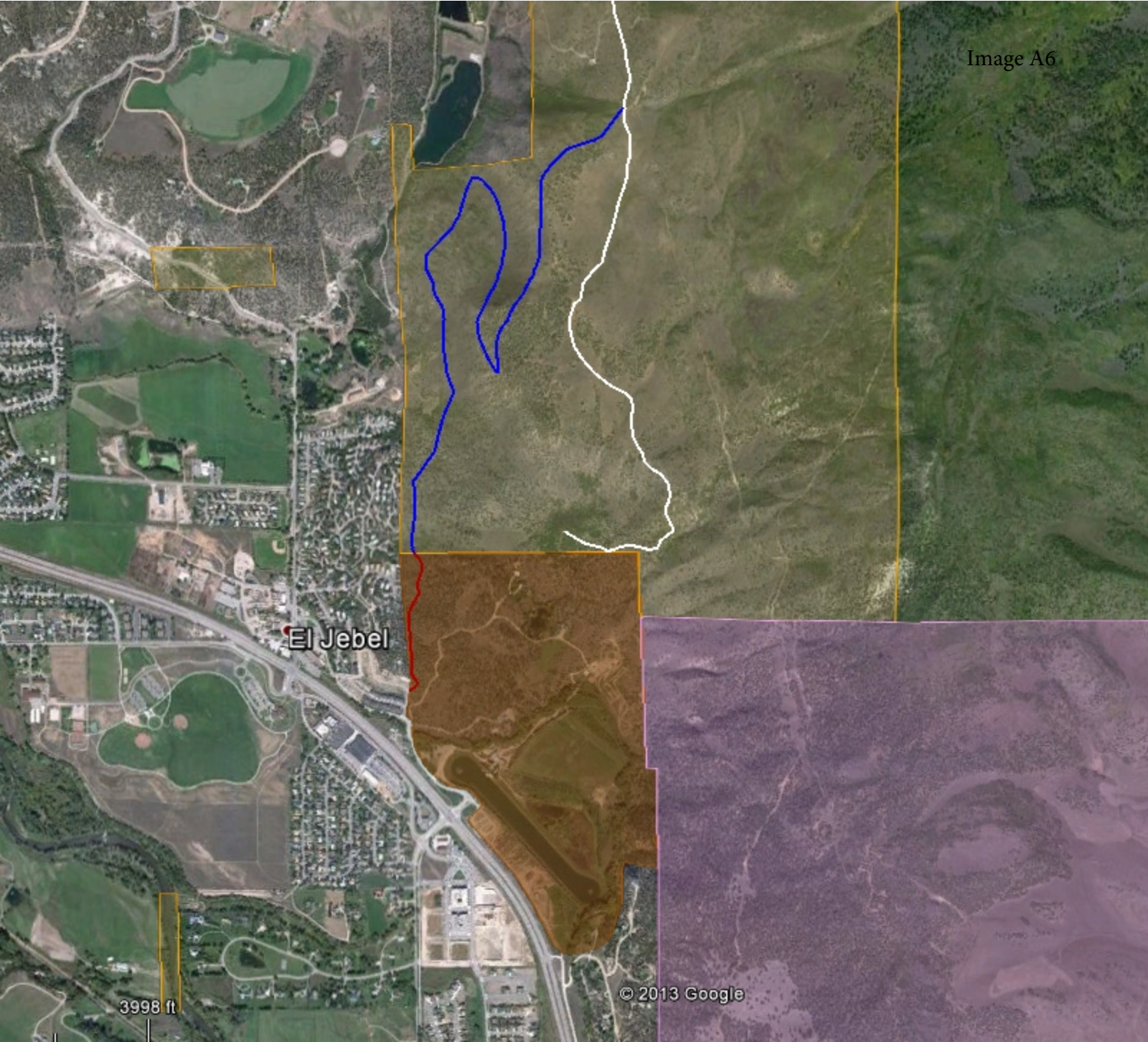


El Jebel

© 2013 Google

Basalt

2.55 mi



El Jebel

3998 ft

El Jebel

1466 ft



Rules for Presenting and Participating in Mid Valley Trails Committee

Meetings happen every 4th Thursday of each month in person or via Webex. Find the meeting location and Webex link on the Meeting Dates Document.

1. All projects have to be in Eagle County in order for Mid Valley Trails Committee to provide funding or oversight.
2. If you would like to present a project to the committee please provide a map of where it will be taking place, an estimated budget, a draft and schedule.
3. If project is approved by the committee, each month you will be required to present an update about the progress of the project. Please include pictures, schedule updates and documentation.
4. Acceptable documentation: Maps, Links, Word Documents, PDF's, Pictures.

All documentation needs to be submitted to Sarah 10 days prior to the meetings. If it is not included on the agenda it cannot be presented in the meeting.

If you have any further questions, please reach out to Sarah at sfaichney@rfta.com

Recruiting Information Flyer

What is Mid Valley Trail Committee?

- A volunteer-ran committee that was established originally by the Eagle County Regional Transportation Authority to administer the portion of the Eagle County half-cent transportation tax collected in the Roaring Fork Valley that is dedicated to trails (10% of total revenue collected in the RFV).
- Which means you as tax payers in Eagle County are funding this committee

Mid Valley Trails Committee is responsible for?

- Selecting trails projects within the Eagle County portion of the Roaring Fork Valley to be funded
 - Current projects going on
 - El Jebel to Basalt mountain connection
 - Crown Trail improvements
 - Basalt Medical Center Trail

When does Mid Valley Trail Committee meet?

- Every 4th Thursday of each month in person and via Webex. For more information go to the RFTA website under the Railroad Corridor Documentation to learn more.
[Rio Grande Trail Documentation & Info - Master Plan | RFTA](#)

Only one rule for joining!

- Must live in Eagle County

Reasons to join if you're

- Passionate about the trails in Eagle County
- Passionate about the current organizations doing projects with MVTC
 - Roaring Fork Mountain Bike Association
 - Roaring Fork Outdoor Volunteers
 - Roaring Fork Horse Council
 - Town of Basalt.
 - POST – Pitkin County Open Space and Trails
- Want to be included in community projects.

MVTC Meeting Dates

Join from home with the Webex link below:

<https://rfta.webex.com/rfta/j.php?MTID=m8735889564752c8bfb6765869049936b>

March 23rd 2023

April 27th 2023

May 25th 2023

June 22nd 2023

July 27th 2023

August 24th 2023

September 28th 2023

October 26th 2023

November *TBD

December *TBD

*Due to the holiday season we will schedule the meetings based on availability during that time.