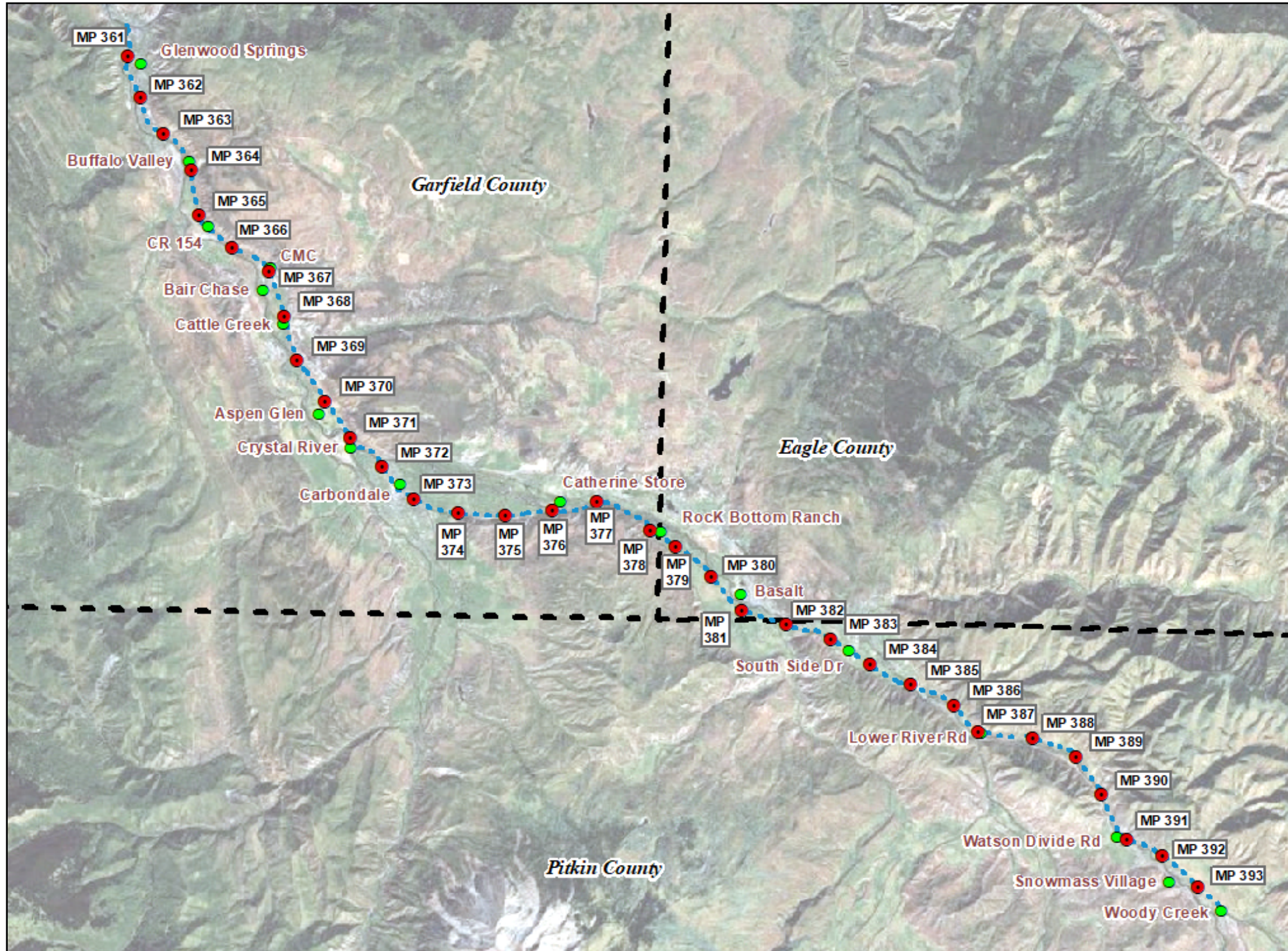




# RFTA Railroad Right-of-Way Ownership Atlas

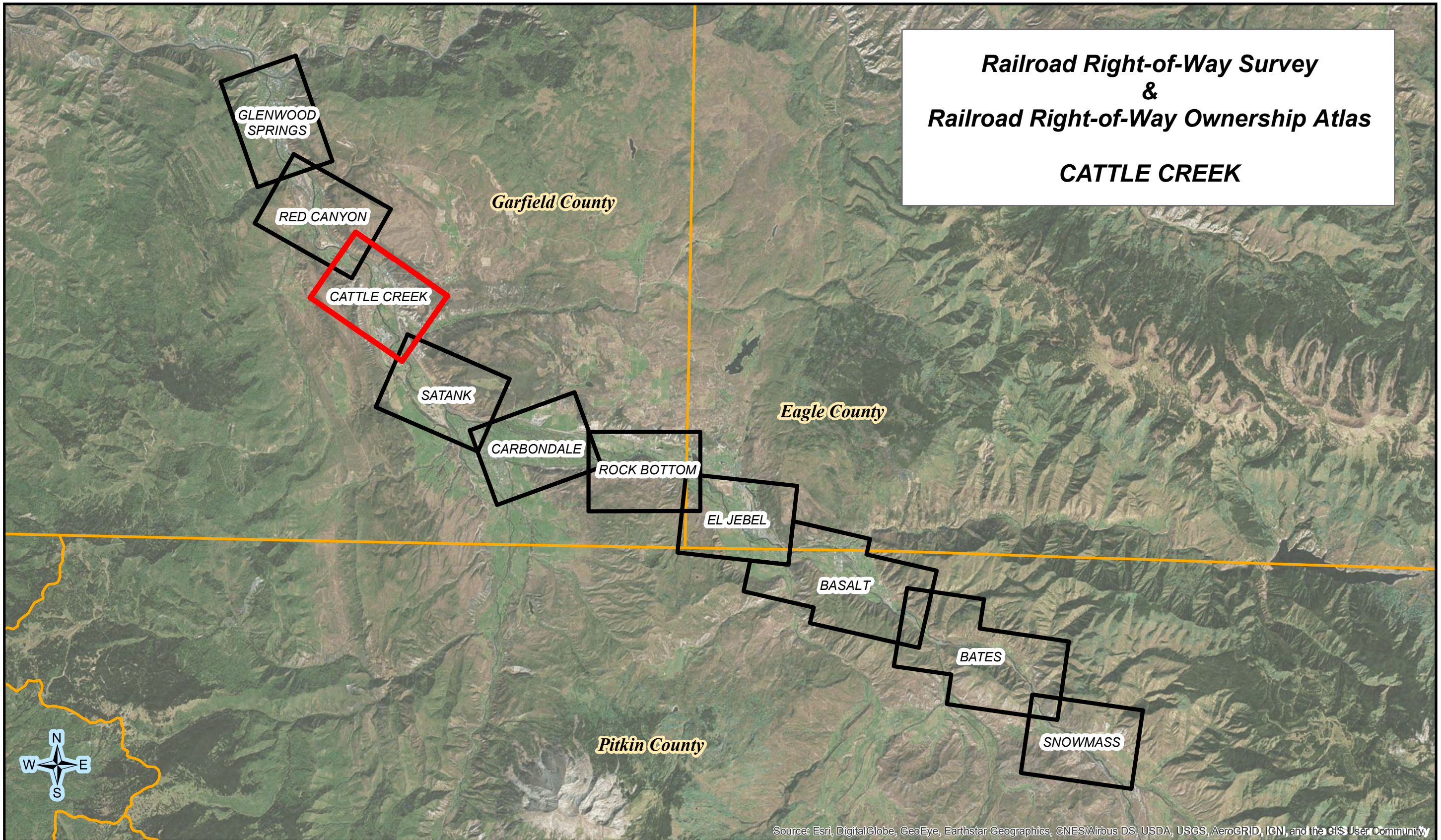
Issue Date: January 10, 2020



- Prepared using ownership research data from the Railroad Right-of-Way Survey prepared by Farnsworth Group, Inc. in 2007/2008. Recorded at Reception No.'s 784 through 789 in the Records of Garfield County, Colorado, in Book 1 at Pages 704 through 715 in the Records of Eagle County, Colorado, and at Reception No.'s 555084 through 555087 in the Records of Pitkin County, Colorado, plus additional research data obtained since the Survey.
- Specific ownership information is from historic railroad and public records research performed by Farnsworth Group, Inc. and did not include title commitments or any other title company research.
- Municipal boundaries from Garfield & Pitkin Counties.
- Initial publication date of this Atlas: December 19, 2012, revised January 2020.
- The RFTA RR ROW shown on these atlas sheets has been updated since the 2008 survey to reflect the current ROW boundaries as of August 31, 2019.



**Railroad Right-of-Way Survey  
&  
Railroad Right-of-Way Ownership Atlas  
CATTLE CREEK**

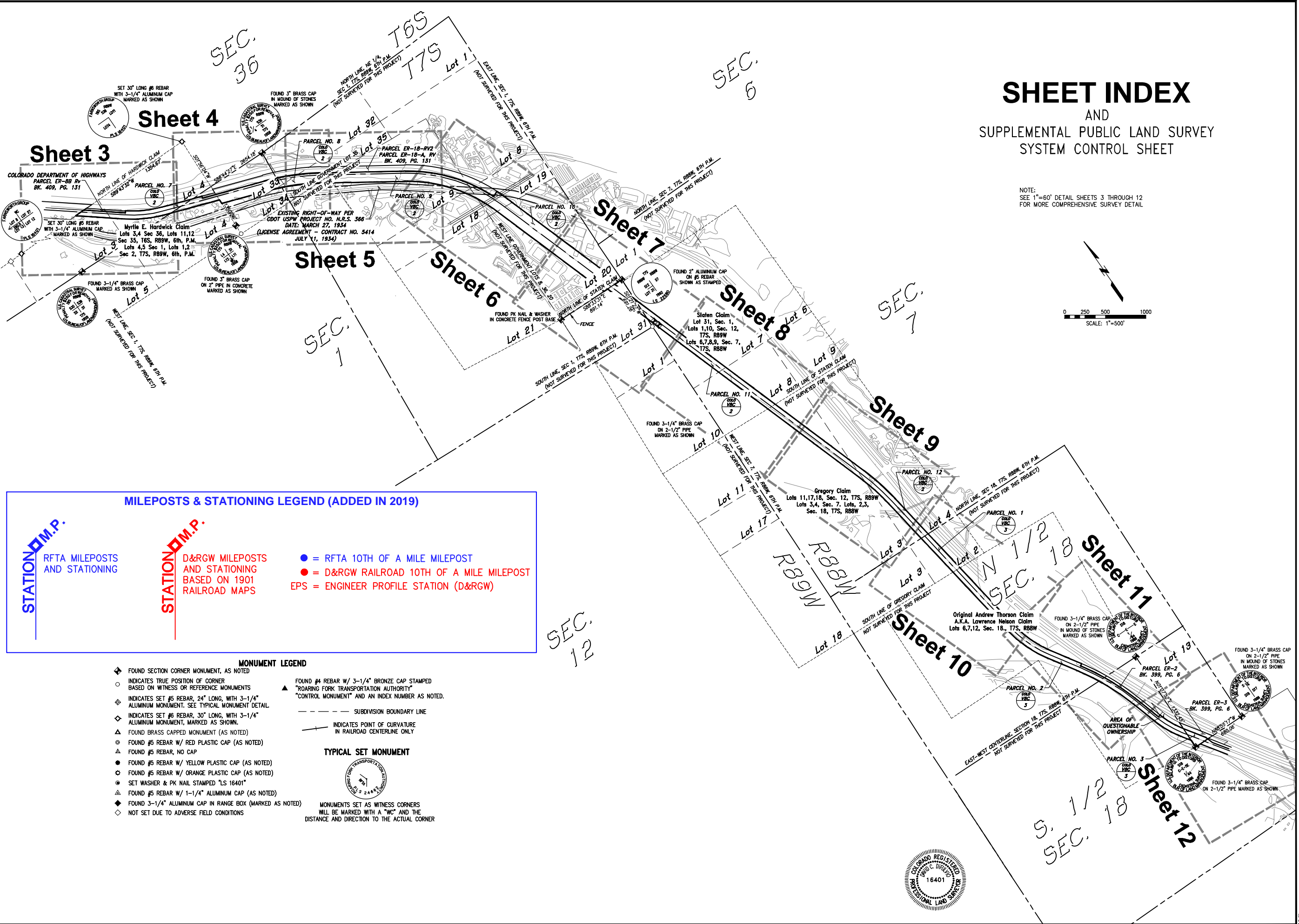
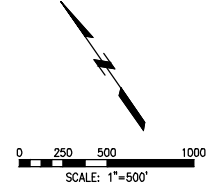




Page Intentionally Blank

# SHEET INDEX AND SUPPLEMENTAL PUBLIC LAND SURVEY SYSTEM CONTROL SHEET

NOTE:  
SEE 1"=60' DETAIL SHEETS 3 THROUGH 12  
FOR MORE COMPREHENSIVE SURVEY DETAIL



### MILEPOSTS & STATIONING LEGEND (ADDED IN 2019)

STATION **M.P.**

RFTA MILEPOSTS AND STATIONING

STATION **M.P.**

D&RGW MILEPOSTS AND STATIONING BASED ON 1901 RAILROAD MAPS

- = RFTA 10TH OF A MILE MILEPOST
- = D&RGW RAILROAD 10TH OF A MILE MILEPOST
- EPS = ENGINEER PROFILE STATION (D&RGW)

### MONUMENT LEGEND

- ◆ FOUND SECTION CORNER MONUMENT, AS NOTED
- INDICATES TRUE POSITION OF CORNER BASED ON WITNESS OR REFERENCE MONUMENTS
- ◆ INDICATES SET #5 REBAR, 24" LONG, WITH 3-1/4" ALUMINUM MONUMENT. SEE TYPICAL MONUMENT DETAIL.
- ◇ INDICATES SET #6 REBAR, 30" LONG, WITH 3-1/4" ALUMINUM MONUMENT, MARKED AS SHOWN.
- ▲ FOUND BRASS CAPPED MONUMENT (AS NOTED)
- FOUND #5 REBAR W/ RED PLASTIC CAP (AS NOTED)
- FOUND #5 REBAR, NO CAP
- FOUND #5 REBAR W/ YELLOW PLASTIC CAP (AS NOTED)
- FOUND #5 REBAR W/ ORANGE PLASTIC CAP (AS NOTED)
- SET WASHER & PK NAIL STAMPED "LS 16401"
- FOUND #5 REBAR W/ 1-1/4" ALUMINUM CAP (AS NOTED)
- ◆ FOUND 3-1/4" ALUMINUM CAP IN RANGE BOX (MARKED AS NOTED)
- ◇ NOT SET DUE TO ADVERSE FIELD CONDITIONS

- ▲ FOUND #4 REBAR W/ 3-1/4" BRONZE CAP STAMPED "ROARING FORK TRANSPORTATION AUTHORITY" "CONTROL MONUMENT" AND AN INDEX NUMBER AS NOTED.
- - - SUBDIVISION BOUNDARY LINE
- INDICATES POINT OF CURVATURE IN RAILROAD CENTERLINE ONLY

### TYPICAL SET MONUMENT



MONUMENTS SET AS WITNESS CORNERS WILL BE MARKED WITH A "WC" AND THE DISTANCE AND DIRECTION TO THE ACTUAL CORNER



XREF: Plan: \\fsi\arcas\1 - V\projects\land\ind\ind\1 - RFTA Contract - 12-023 - RR - Gravel Trail ROW from Development\Comp\Map\Plan\V-3027-Catle Creek-Railway | 11/1/2016 3:11 PM |  
 1 - cad\p1\1203\02\02\02 - RFTA Contract - 12-023 - RR - Gravel Trail ROW from Development\Comp\Map\Plan\V-3027-Catle Creek-Railway | 11/1/2016 3:11 PM |

Roaring Fork  
Transportation Authority  
0786 Industry Way  
Carbondale, CO 81623

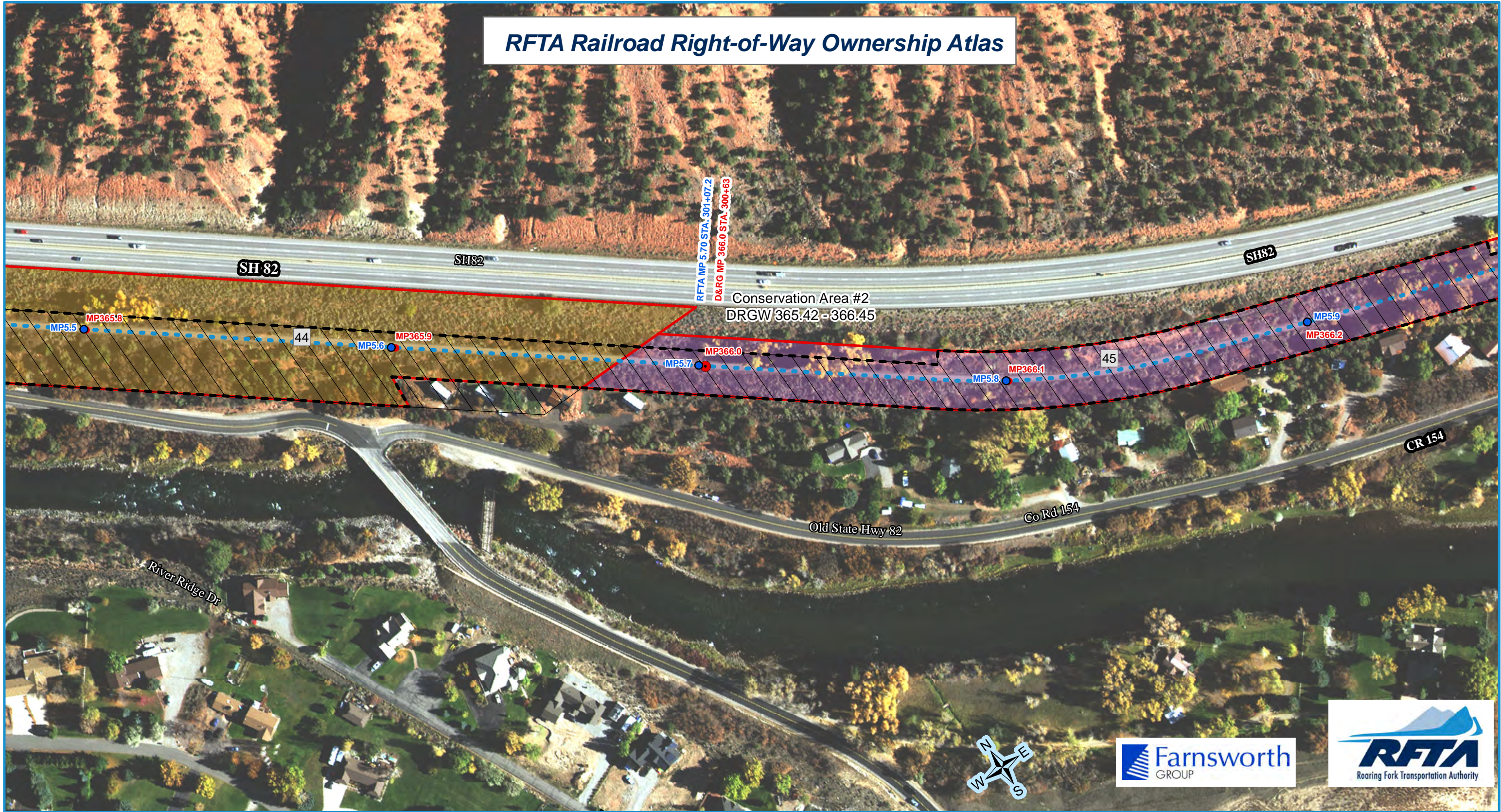
Date: 12/17/2007  
Drawn: MCG/JY/JH  
Checked: DCD/DW  
Book No.: 2184

**Farnsworth**  
GROUP  
ENGINEER  
ARCHITECT  
SURVEYOR  
SCIENTIST  
8055 EAST TULSA AVENUE, SUITE 850, DENVER, COLORADO 80237  
(303) 692-8837 / (303) 692-8670 Fax www.fg.com

**Railroad ROW Survey - Cattle Creek Segment  
Portion of Former Denver & Rio Grande Railroad  
Aspen Branch Right-Of-Way**  
Section 36, T6S, R89W, 6th P.M. and  
Section 36, T6S, R89W, 6th P.M. and  
R89W, 6th P.M., & Section 7, & 18, T7S, R88W, and  
Garfield County, State of Colorado

Project No.:  
**305007.7**  
SHEET 2 OF 12  
OVERALL SHEET 24 OF 126

# RFTA Railroad Right-of-Way Ownership Atlas



- RFTA Mileposts**
- Mile
  - Tenth
- D&RG Mileposts**
- Mile
  - Tenth
  - Conservation Covenant Area Begin/End
- Conservation Covenant Area Hatch

- RFTA ROW Centerline
- - - RFTA ROW Line
- ▭ Parcel Division Lines
- ▭ Municipal Limits

- Parcel - Type**
- |           |         |                        |              |           |
|-----------|---------|------------------------|--------------|-----------|
| 1 - Grant | 2 - Fee | 3 - Adverse Possession | 4 - Easement | 5 - Other |
|-----------|---------|------------------------|--------------|-----------|

- 1 = Gov't Congressional Grant = Railroad Land Grant (Limited Fee or Fee Simple-Determinant)
- 2 = Fee/Deeded
- 4 = Prescriptive Right/Adverse Possession
- 5 = Easement
- 6 = Other ( License, Contract, Permit, Ordinance, Court Decree, Charter, State PUC Decision [Administrative Law Decision] etc.)

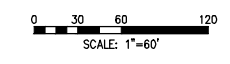
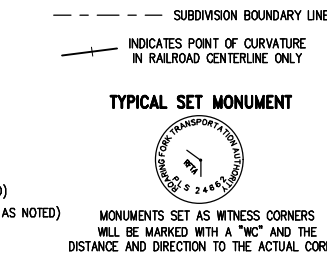
Parcel Number Label: 68

Aerial background: Hexagon Valtus Aerial Imagery - 1 foot - Sept. 2017

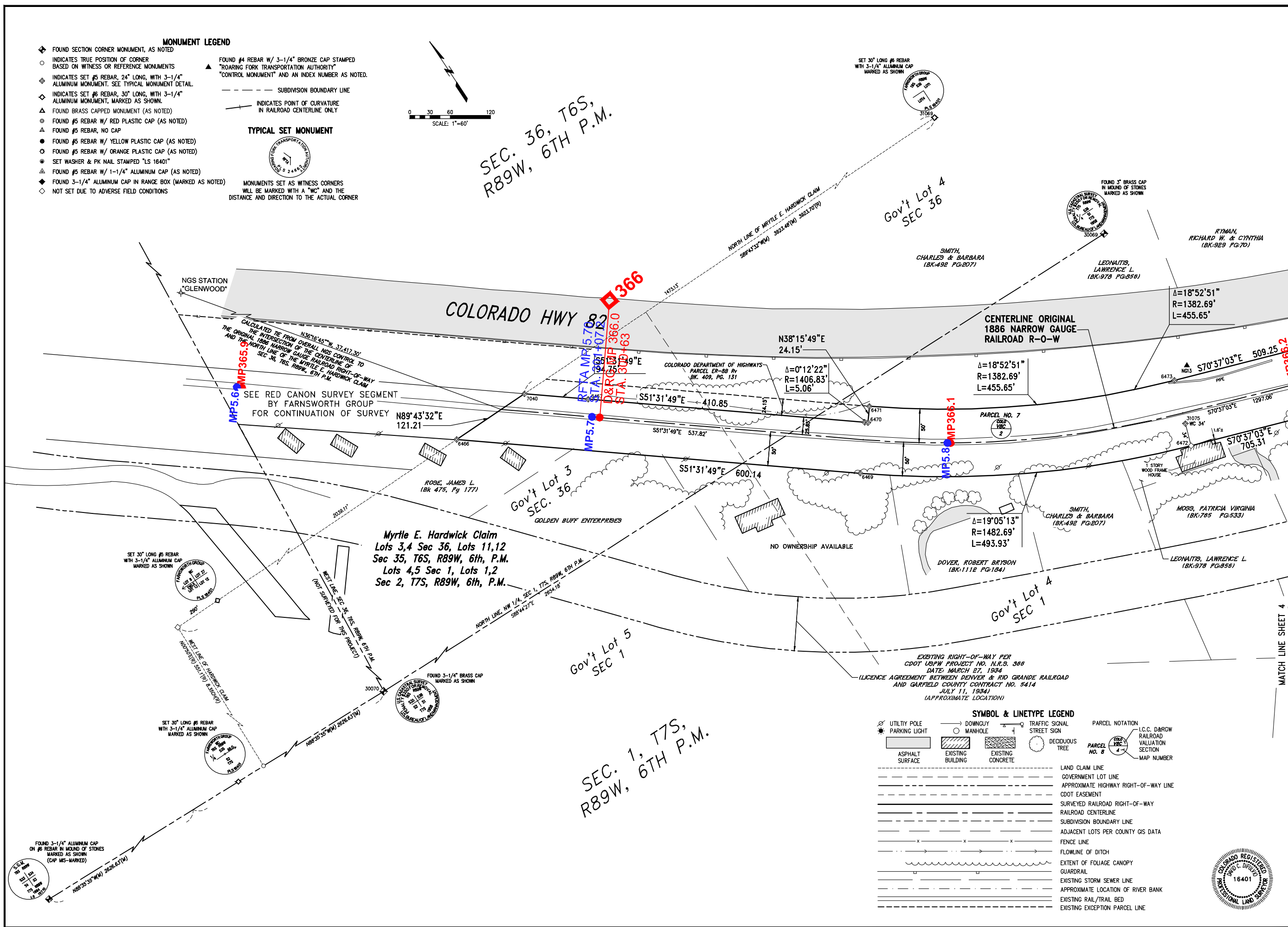


Rev. 1/8/2020

- ### MONUMENT LEGEND
- ◆ FOUND SECTION CORNER MONUMENT, AS NOTED
  - INDICATES TRUE POSITION OF CORNER BASED ON WITNESS OR REFERENCE MONUMENTS
  - ◇ INDICATES SET #5 REBAR, 24" LONG, WITH 3-1/4" ALUMINUM MONUMENT. SEE TYPICAL MONUMENT DETAIL.
  - ◇ INDICATES SET #6 REBAR, 30" LONG, WITH 3-1/4" ALUMINUM MONUMENT, MARKED AS SHOWN.
  - ▲ FOUND BRASS CAPPED MONUMENT (AS NOTED)
  - ⊙ FOUND #5 REBAR W/ RED PLASTIC CAP (AS NOTED)
  - ▲ FOUND #5 REBAR, NO CAP
  - FOUND #5 REBAR W/ YELLOW PLASTIC CAP (AS NOTED)
  - ⊙ FOUND #5 REBAR W/ ORANGE PLASTIC CAP (AS NOTED)
  - ⊙ SET WASHER & PK NAIL STAMPED "LS 16401"
  - ▲ FOUND #5 REBAR W/ 1-1/4" ALUMINUM CAP (AS NOTED)
  - ◆ FOUND 3-1/4" ALUMINUM CAP IN RANGE BOX (MARKED AS NOTED)
  - ◇ NOT SET DUE TO ADVERSE FIELD CONDITIONS



SEC. 36, T6S, R89W, 6TH P.M.



### SYMBOL & LINETYPE LEGEND

	UTILITY POLE		DOWNGUY		TRAFFIC SIGNAL
	PARKING LIGHT		MANHOLE		STREET SIGN
	ASPHALT SURFACE		EXISTING BUILDING		EXISTING CONCRETE
	DECIDUOUS TREE		LAND CLAIM LINE		GOVERNMENT LOT LINE
	FENCE LINE		APPROXIMATE HIGHWAY RIGHT-OF-WAY LINE		CDOT EASEMENT
	FLOWLINE OF DITCH		SURVEYED RAILROAD RIGHT-OF-WAY		RAILROAD CENTERLINE
	EXTENT OF FOLIAGE CANOPY		SUBDIVISION BOUNDARY LINE		ADJACENT LOTS PER COUNTY GIS DATA
	GUARDRAIL		FENCE LINE		FLOWLINE OF DITCH
	EXISTING STORM SEWER LINE		EXTENT OF FOLIAGE CANOPY		GUARDRAIL
	APPROXIMATE LOCATION OF RIVER BANK		EXISTING STORM SEWER LINE		APPROXIMATE LOCATION OF RIVER BANK
	EXISTING RAIL/TRAIL BED		EXISTING RAIL/TRAIL BED		EXISTING EXCEPTION PARCEL LINE



**Railroad ROW Survey - Cattle Creek Segment**  
**Portion of Former Denver & Rio Grande Railroad**  
**Aspen Branch Right-Of-Way**  
 Section 36, T6S, R89W, 6th P.M. and Section 36, T6S, R89W, 6th P.M. and Section 7, & 18, T7S, R88W, 6th P.M. Garfield County, State of Colorado

Project No.: 3050077  
 SHEET 3 OF 12  
 OVERALL SHEET 25 OF 126

Date: 12/17/2007  
 Drawn: MCS/OJ/JH  
 Checked: DCD/DW  
 Book No.: 2184

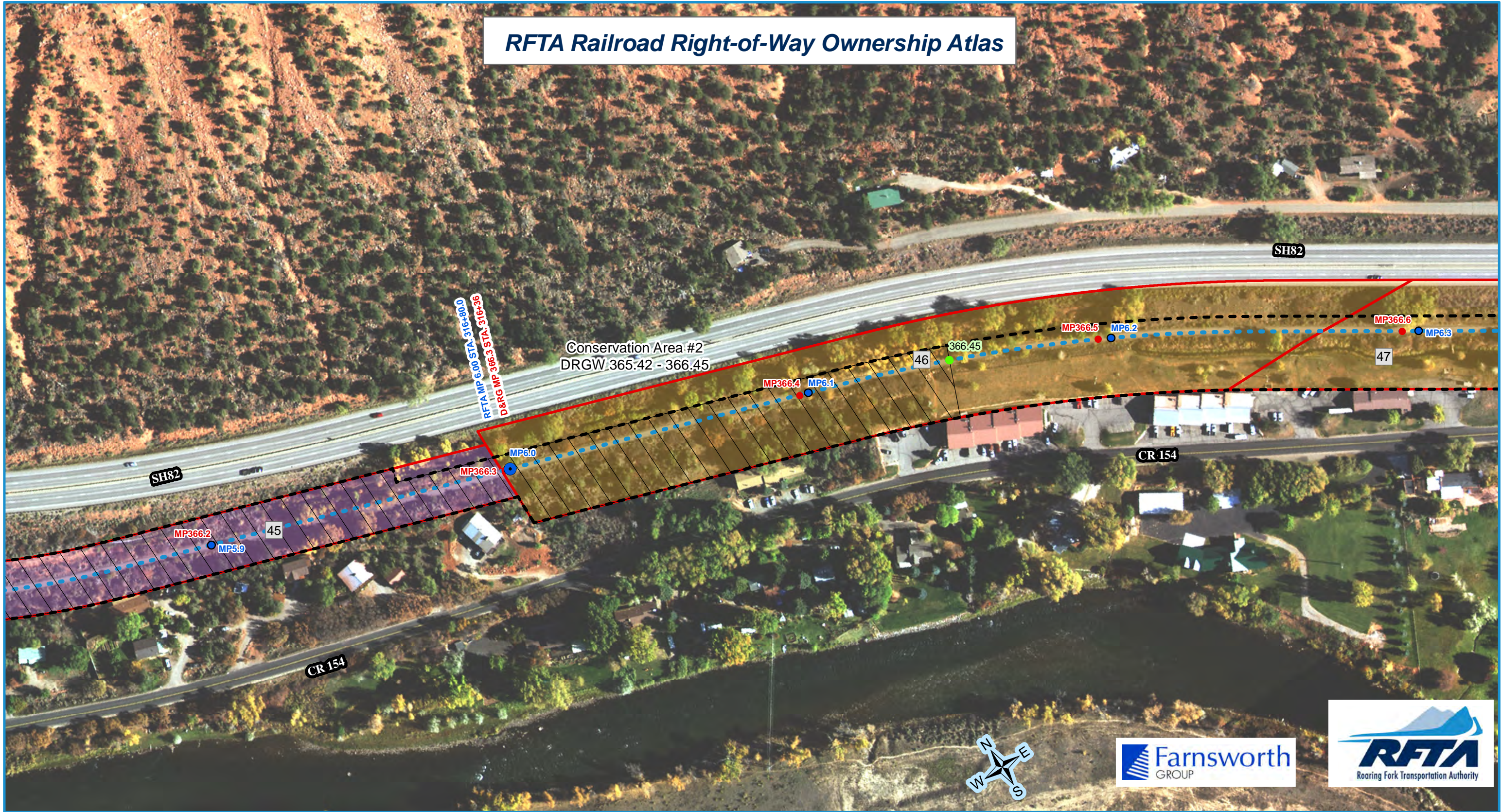
Roaring Fork Transportation Authority  
 0786 Industry Way  
 Carbondale, CO 81623

**Farnsworth GROUP**  
 ENGINEER ARCHITECT SURVEYOR SCIENTIST  
 8055 EAST TULSA AVENUE, SUITE 800, DENVER, COLORADO 80237  
 (303) 692-8837 / (303) 692-0070 Fax www.farnsworth.com

ISSUE: 1 12/17/07 JSH ORIGINAL ISSUE  
 2 01/10/08 MCG REUSE EXCEPTION PARCEL SHEETS 4,5,6  
 3 12/05/08 AFP REVISION FOR CORRECTION DEED

Xref: P:\2007\121707\121707.dwg - R89W, 6th P.M. from Development\121707.dwg  
 11/17/2010 3:11 PM  
 I:\projects\121707\121707.dwg - R89W, 6th P.M. from Development\121707.dwg  
 11/17/2010 3:11 PM

# RFTA Railroad Right-of-Way Ownership Atlas



- RFTA Mileposts**
- Mile
  - Tenth
- D&RG Mileposts**
- Mile
  - Tenth
  - Conservation Covenant Area Begin/End
- Conservation Covenant Area Hatch

- RFTA ROW Centerline
- - - RFTA ROW Line
- ▭ Parcel Division Lines
- ▭ Municipal Limits

- Parcel - Type**
- |              |           |                        |                        |
|--------------|-----------|------------------------|------------------------|
| 1 - Grant    | 2 - Fee   | 3 - Adverse Possession | 4 - Adverse Possession |
| 5 - Easement | 6 - Other |                        |                        |

- 1 = Gov't Congressional Grant = Railroad Land Grant (Limited Fee or Fee Simple-Determinant)
- 2 = Fee/Deeded
- 4 = Prescriptive Right/Adverse Possession
- 5 = Easement
- 6 = Other ( License, Contract, Permit, Ordinance, Court Decree, Charter, State PUC Decision [Administrative Law Decision] etc.)

Parcel Number Label: 68

Aerial background: Hexagon Valtus Aerial Imagery - 1 foot - Sept. 2017

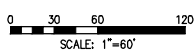
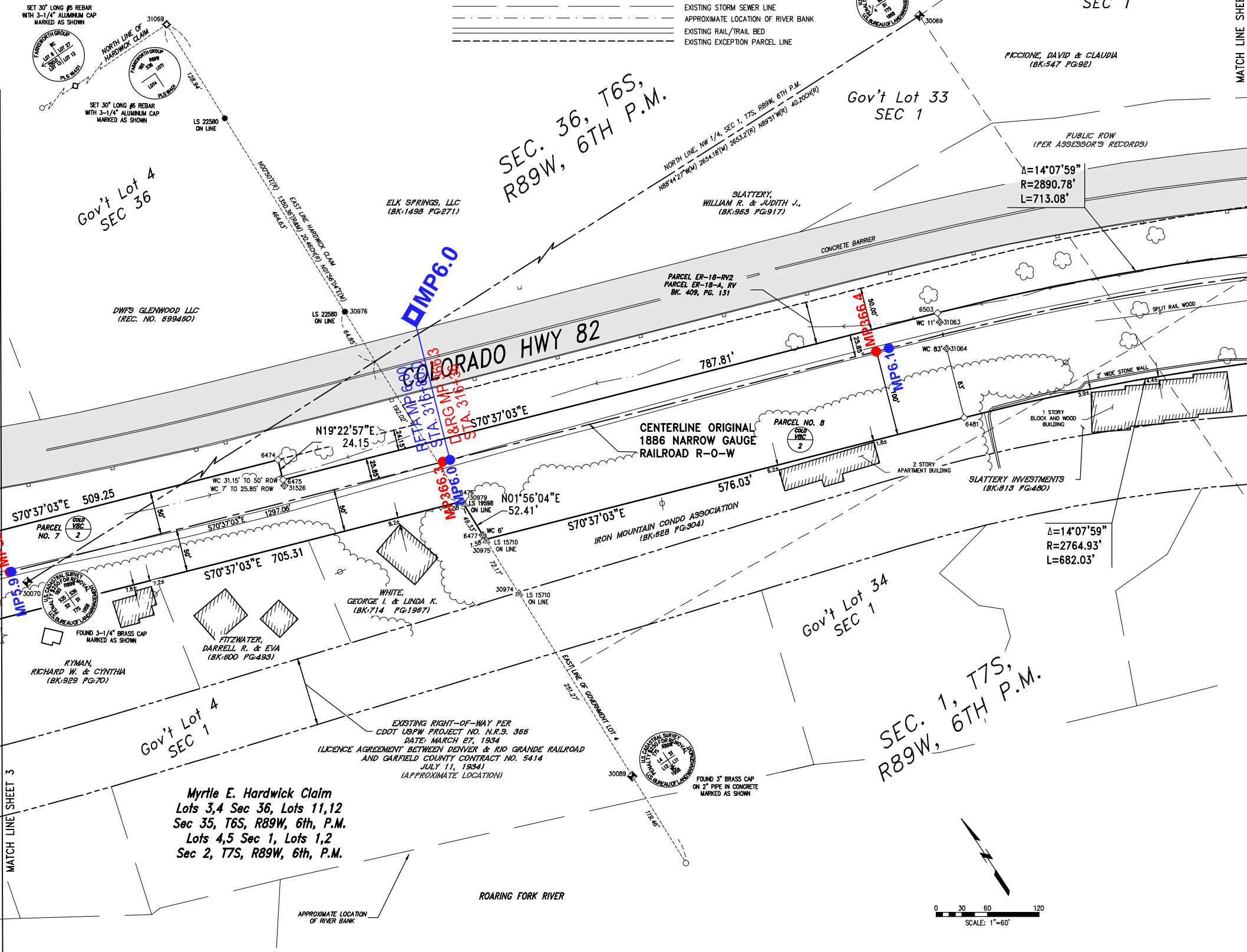


Rev. 1/8/2020



- MONUMENT LEGEND**
- ◆ FOUND SECTION CORNER MONUMENT, AS NOTED
  - INDICATES TRUE POSITION OF CORNER BASED ON WITNESS OR REFERENCE MONUMENTS
  - ◆ INDICATES SET #5 REBAR, 24" LONG, WITH 3-1/4" ALUMINUM MONUMENT. SEE TYPICAL MONUMENT DETAIL.
  - ◆ INDICATES SET #6 REBAR, 30" LONG, WITH 3-1/4" ALUMINUM MONUMENT, MARKED AS SHOWN.
  - ▲ FOUND BRASS CAPPED MONUMENT (AS NOTED)
  - FOUND #5 REBAR W/ RED PLASTIC CAP (AS NOTED)
  - FOUND #5 REBAR, NO CAP
  - FOUND #5 REBAR W/ YELLOW PLASTIC CAP (AS NOTED)
  - FOUND #5 REBAR W/ ORANGE PLASTIC CAP (AS NOTED)
  - SET WASHER & PK NAIL STAMPED "LS 16401"
  - ▲ FOUND #5 REBAR W/ 1-1/4" ALUMINUM CAP (AS NOTED)
  - ◆ FOUND 3-1/4" ALUMINUM CAP IN RANGE BOX (MARKED AS NOTED)
  - ◇ NOT SET DUE TO ADVERSE FIELD CONDITIONS
- FOUND #4 REBAR W/ 3-1/4" BRONZE CAP STAMPED "ROARING FORK TRANSPORTATION AUTHORITY CONTROL MONUMENT" AND AN INDEX NUMBER AS NOTED.
- SUBDIVISION BOUNDARY LINE
- INDICATES POINT OF CURVATURE IN RAILROAD CENTERLINE ONLY
- TYPICAL SET MONUMENT**
- MONUMENTS SET AS WITNESS CORNERS WILL BE MARKED WITH A "WC" AND THE DISTANCE AND DIRECTION TO THE ACTUAL CORNER

- SYMBOL & LINETYPE LEGEND**
- |                   |                   |                   |  |
|-------------------|-------------------|-------------------|--|
| UTILITY POLE      | DOWNGUY           | TRAFFIC SIGNAL    | PARCEL NOTATION                                    |
| PARKING LIGHT     | MANHOLE           | STREET SIGN       | I.C.C. D&RGW RAILROAD VALUATION SECTION MAP NUMBER |
| ASPHALT SURFACE   | EXISTING BUILDING | EXISTING CONCRETE | LAND CLAIM LINE                                    |
| EXISTING BUILDING | EXISTING CONCRETE | DECIDUOUS TREE    | GOVERNMENT LOT LINE                                |
|                   |                   |                   | APPROXIMATE HIGHWAY RIGHT-OF-WAY LINE              |
|                   |                   |                   | CDOT EASEMENT                                      |
|                   |                   |                   | SURVEYED RAILROAD RIGHT-OF-WAY                     |
|                   |                   |                   | RAILROAD CENTERLINE                                |
|                   |                   |                   | SUBDIVISION BOUNDARY LINE                          |
|                   |                   |                   | ADJACENT LOTS PER COUNTY GIS DATA                  |
|                   |                   |                   | FENCE LINE   |
|                   |                   |                   | FLOWLINE OF DITCH                                  |
|                   |                   |                   | EXTENT OF FOLIAGE CANOPY                           |
|                   |                   |                   | GUARDRAIL  |
|                   |                   |                   | EXISTING STORM SEWER LINE                          |
|                   |                   |                   | APPROXIMATE LOCATION OF RIVER BANK                 |
|                   |                   |                   | EXISTING RAIL/TRAIL BED                            |
|                   |                   |                   | EXISTING EXCEPTION PARCEL LINE                     |



ISSUE:	DATE:	BY:	DESCRIPTION:
1	12/17/07	JSH	ORIGINAL ISSUE
2	01/10/08	MCG	REUSE EXCEPTION PARCEL SHEETS 4,5,6
3	12/09/08	AFP	REVISION FOR CORRECTION DEED

**Roaring Fork Transportation Authority**  
0786 Industry Way  
Canonville, CO 81623

Date: 12/17/2007  
Drawn: MCG/JY/JH  
Checked: DCD/DW  
Book No.: 2184

**Farnsworth GROUP**  
8055 EAST FLUETS AVENUE, SUITE 800, DENVER, COLORADO 80237  
(303) 692-8837 / (303) 692-0470 Fax www.fg.com

**Railroad ROW Survey - Cattle Creek Segment**  
**Portion of Former Denver & Rio Grande Railroad**  
**Aspen Branch Right-Of-Way**  
Section 36, T6S, R89W, 6th P.M. and  
R89W, 6th P.M., & Section 7, & 18, T7S, R88W, 6th P.M.  
Garfield County, State of Colorado

Project No.: 305007.7  
SHEET 4 OF 12  
OVERALL SHEET 26 OF 126

Ref: Plans, Notes, etc. in the project folder at \\fs01\projects\305007\Drawings\11/17/2010\3111.Plot1  
 12/17/2007 10:30:00 AM - PFA Contract: 305007 - Rio Grande Trail ROW from Development\Compass\Map\Print\305007\Drawings\11/17/2010\3111.Plot1

# RFTA Railroad Right-of-Way Ownership Atlas



- RFTA Mileposts**
- Mile
  - Tenth
- D&RG Mileposts**
- Mile
  - Tenth
  - Conservation Covenant Area Begin/End
  - ▨ Conservation Covenant Area Hatch

- RFTA ROW Centerline
- - - RFTA ROW Line
- ▭ Parcel Division Lines
- ▭ Municipal Limits

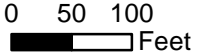
- Parcel - Type**
- 1 - Grant
  - 2 - Fee
  - 3 - Adverse Possession
  - 4 - Adverse Possession
  - 5 - Easement
  - 6 - Other

- 1 = Gov't Congressional Grant = Railroad Land Grant (Limited Fee or Fee Simple-Determinant)
- 2 = Fee/Deeded
- 4 = Prescriptive Right/Adverse Possession
- 5 = Easement
- 6 = Other ( License, Contract, Permit, Ordinance, Court Decree, Charter, State PUC Decision [Administrative Law Decision] etc.)

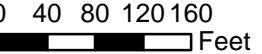
Parcel Number Label: 68

Aerial background: Hexagon Valtus Aerial Imagery - 1 foot - Sept. 2017

1 inch = 160 feet

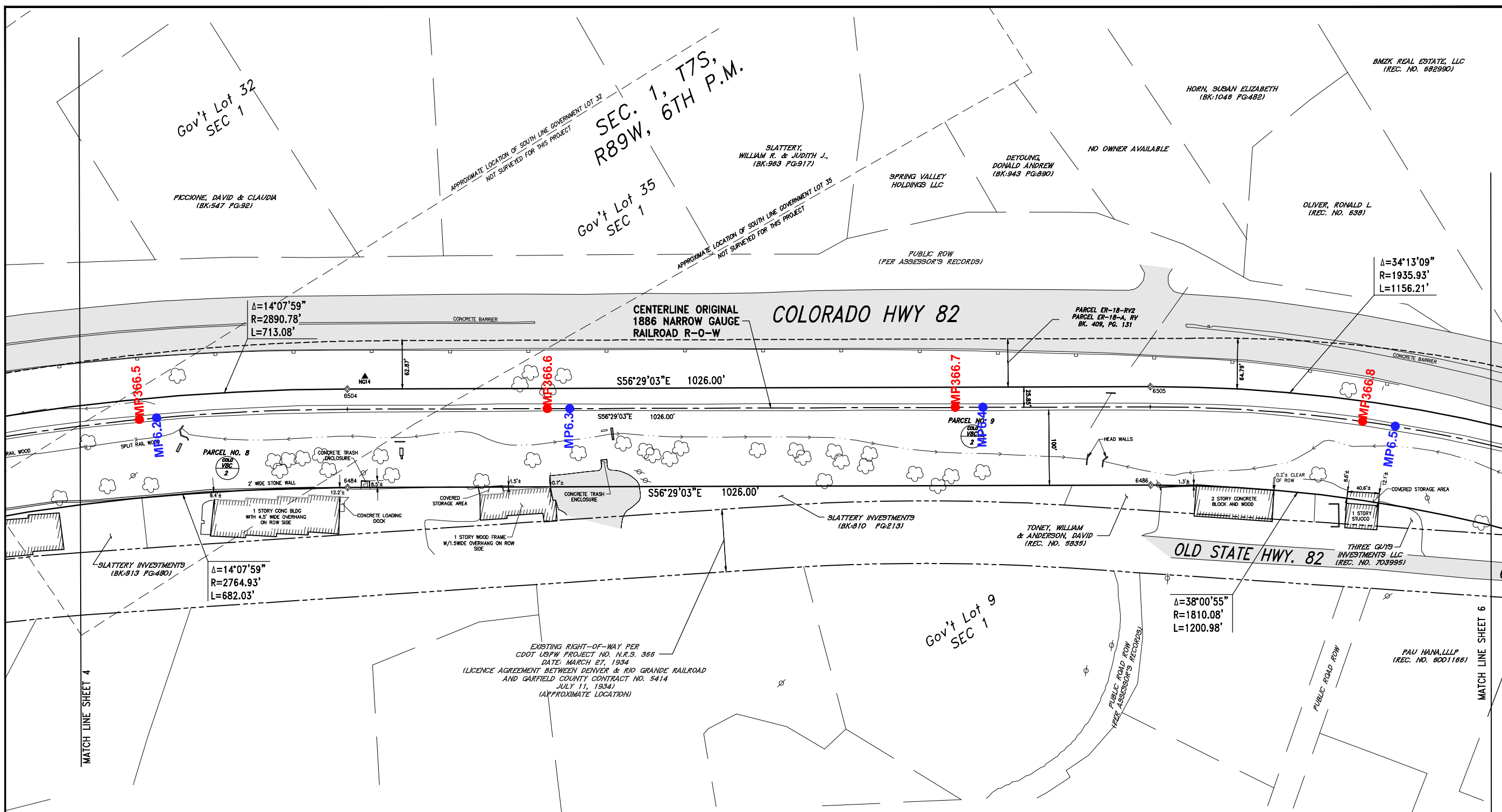


0 120 Feet



Rev. 1/8/2020

Ref: Plan: \\net\users\j... \projects\2016\2016-00 - RFA Contract 12-03 - Rio Grande Trail ROW from Development\Copy\Map\1-3000-Cattle-Divert-Final.dwg | 11/1/2016 3:11 PM |

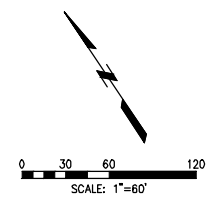


MATCH LINE SHEET 4

MATCH LINE SHEET 6

- MONUMENT LEGEND**
- ◆ FOUND SECTION CORNER MONUMENT, AS NOTED
  - INDICATES TRUE POSITION OF CORNER BASED ON WITNESS OR REFERENCE MONUMENTS
  - ◇ INDICATES SET #5 REBAR, 24" LONG, WITH 3-1/4" ALUMINUM MONUMENT. SEE TYPICAL MONUMENT DETAIL.
  - ◇ INDICATES SET #6 REBAR, 30" LONG, WITH 3-1/4" ALUMINUM MONUMENT, MARKED AS SHOWN.
  - ▲ FOUND BRASS CAPPED MONUMENT (AS NOTED)
  - FOUND #5 REBAR W/ RED PLASTIC CAP (AS NOTED)
  - ▲ FOUND #5 REBAR, NO CAP
  - FOUND #5 REBAR W/ YELLOW PLASTIC CAP (AS NOTED)
  - FOUND #5 REBAR W/ ORANGE PLASTIC CAP (AS NOTED)
  - SET WASHER & PK NAIL STAMPED "LS 16401"
  - FOUND #5 REBAR W/ 1-1/4" ALUMINUM CAP (AS NOTED)
  - ◆ FOUND 3-1/4" ALUMINUM CAP IN RANGE BOX (MARKED AS NOTED)
  - ◇ NOT SET DUE TO ADVERSE FIELD CONDITIONS
- ▲ FOUND #4 REBAR W/ 3-1/4" BRONZE CAP STAMPED "ROARING FORK TRANSPORTATION AUTHORITY CONTROL MONUMENT" AND AN INDEX NUMBER AS NOTED.
- SUBDIVISION BOUNDARY LINE
- INDICATES POINT OF CURVATURE IN RAILROAD CENTERLINE ONLY
- TYPICAL SET MONUMENT**
- 
- MONUMENTS SET AS WITNESS CORNERS WILL BE MARKED WITH A "WC" AND THE DISTANCE AND DIRECTION TO THE ACTUAL CORNER

- SYMBOL & LINETYPE LEGEND**
- UTILITY POLE
  - PARKING LIGHT
  - DOWNGUY MANHOLE
  - EXISTING BUILDING
  - EXISTING CONCRETE
  - DECIDUOUS TREE
  - TRAFFIC SIGNAL
  - STREET SIGN
  - PARCEL NOTATION
  - L.C.C. D&RW RAILROAD VALUATION SECTION
  - MAP NUMBER
  - LAND CLAIM LINE
  - GOVERNMENT LOT LINE
  - APPROXIMATE HIGHWAY RIGHT-OF-WAY LINE
  - CDOT EASEMENT
  - SURVEYED RAILROAD RIGHT-OF-WAY
  - RAILROAD CENTERLINE
  - SUBDIVISION BOUNDARY LINE
  - ADJACENT LOTS PER COUNTY GIS DATA
  - FENCE LINE
  - FLOWLINE OF DITCH
  - EXTENT OF FOLIAGE CANOPY
  - GUARDRAIL
  - EXISTING STORM SEWER LINE
  - APPROXIMATE LOCATION OF RIVER BANK
  - EXISTING RAIL/TRAIL BED
  - EXISTING EXCEPTION PARCEL LINE



ISSUE: 1 12/17/07 JSH ORIGINAL ISSUE  
 2 01/10/08 MCG REUSE EXCEPTION PARCEL SHEETS 4,5,6  
 3 12/05/08 AFP REVISION FOR CORRECTION DEED

CLIENT: Roaring Fork Transportation Authority  
 0786 Industry Way  
 Carbondale, CO 81623

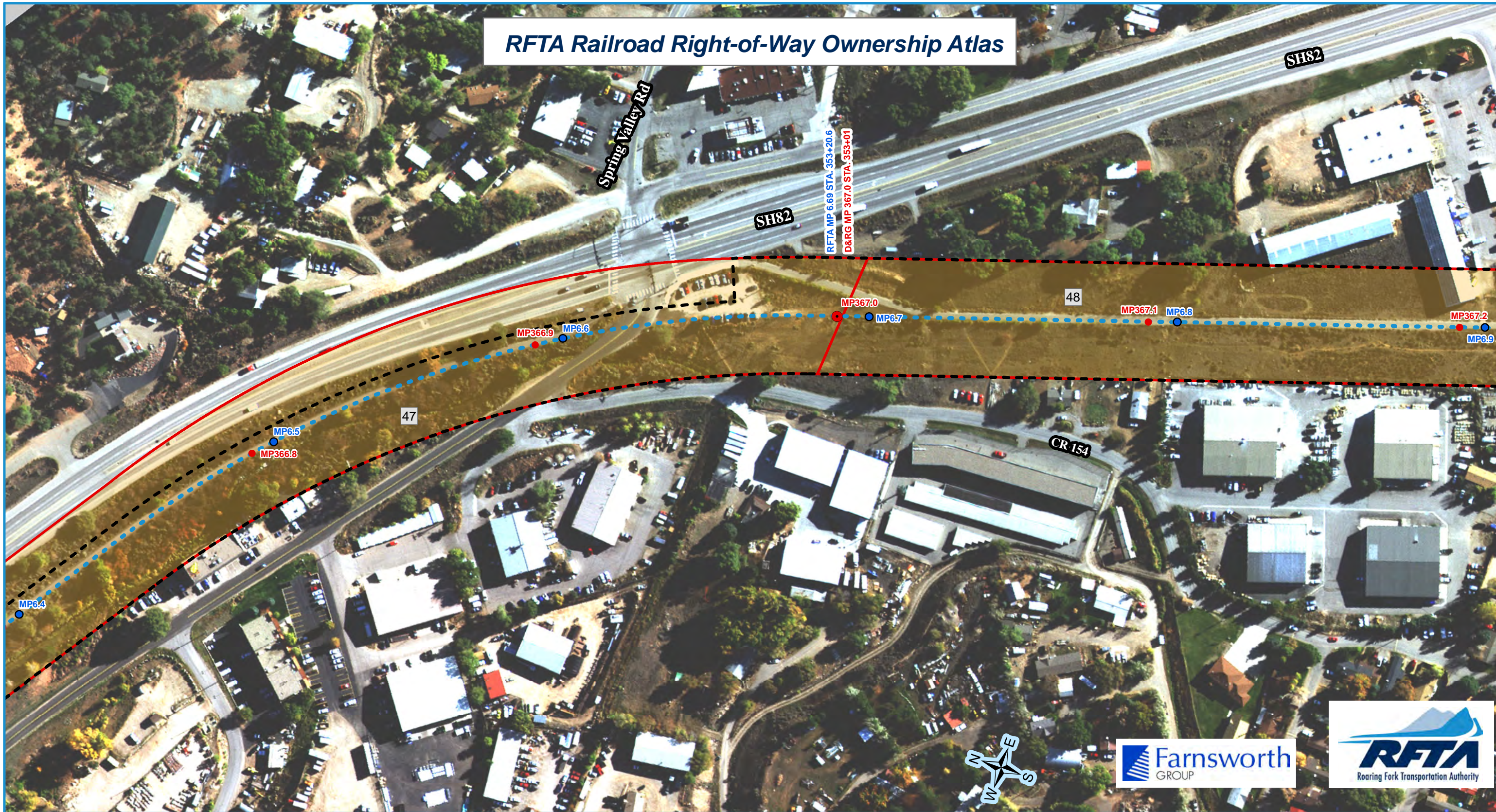
DATE: 12/17/2007  
 DRAWN: MCG/JY/JH  
 CHECKED: DCD/DW  
 BOOK NO.: 2184

**Farnsworth GROUP**  
 ENGINEER ARCHITECT SURVEYOR SCIENTIST  
 8055 EAST TULSA AVENUE, SUITE 800, DENVER, COLORADO 80237  
 (303) 692-8837 / (303) 692-6070 Fax www.farnsworth.com

**Railroad ROW Survey - Cattle Creek Segment**  
**Portion of Former Branch & Rio Grande Railroad**  
**Aspen Branch Right-Of-Way**  
 Section 96, T6S, R89W, 6th P.M. and  
 Section 96, T6S, R89W, 6th P.M. and  
 R89W, 6th P.M., & Section 7, & 18, T7S, R88W, 6th P.M.  
 Garfield County, State of Colorado

Project No.: 305007.7  
 SHEET 5 OF 12  
 OVERALL SHEET 27 OF 126

# RFTA Railroad Right-of-Way Ownership Atlas



- RFTA Mileposts**
- Mile
  - Tenth
- D&RG Mileposts**
- Mile
  - Tenth
  - Conservation Covenant Area Begin/End
- Conservation Covenant Area Hatch

- RFTA ROW Centerline
- - - RFTA ROW Line
- ▭ Parcel Division Lines
- ▭ Municipal Limits

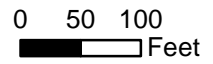
- Parcel - Type**
- |           |         |                        |              |           |
|-----------|---------|------------------------|--------------|-----------|
| 1 - Grant | 2 - Fee | 3 - Adverse Possession | 4 - Easement | 5 - Other |
|-----------|---------|------------------------|--------------|-----------|

- 1 = Gov't Congressional Grant = Railroad Land Grant (Limited Fee or Fee Simple-Determinant)
- 2 = Fee/Deeded
- 4 = Prescriptive Right/Adverse Possession
- 5 = Easement
- 6 = Other ( License, Contract, Permit, Ordinance, Court Decree, Charter, State PUC Decision [Administrative Law Decision] etc.)

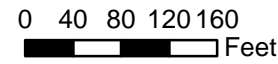
Parcel Number Label: 68

Aerial background: Hexagon Valtus Aerial Imagery - 1 foot - Sept. 2017

1 inch = 160 feet



0 120 Feet



Rev. 1/8/2020



**MONUMENT LEGEND**

◆ FOUND SECTION CORNER MONUMENT, AS NOTED

○ INDICATES TRUE POSITION OF CORNER BASED ON WITNESS OR REFERENCE MONUMENTS

◆ INDICATES SET #5 REBAR, 24" LONG, WITH 3-1/4" ALUMINUM MONUMENT. SEE TYPICAL MONUMENT DETAIL.

◆ INDICATES SET #6 REBAR, 30" LONG, WITH 3-1/4" ALUMINUM MONUMENT, MARKED AS SHOWN.

△ FOUND BRASS CAPPED MONUMENT (AS NOTED)

△ FOUND #5 REBAR W/ RED PLASTIC CAP (AS NOTED)

△ FOUND #5 REBAR, NO CAP

● FOUND #5 REBAR W/ YELLOW PLASTIC CAP (AS NOTED)

○ FOUND #5 REBAR W/ ORANGE PLASTIC CAP (AS NOTED)

● SET WASHER & PK NAIL STAMPED "LS 16401"

◆ FOUND #5 REBAR W/ 1-1/4" ALUMINUM CAP (AS NOTED)

◆ FOUND 3-1/4" ALUMINUM CAP IN RANGE BOX (MARKED AS NOTED)

◇ NOT SET DUE TO ADVERSE FIELD CONDITIONS

△ FOUND #4 REBAR W/ 3-1/4" BRONZE CAP STAMPED "ROARING FORK TRANSPORTATION AUTHORITY CONTROL MONUMENT" AND AN INDEX NUMBER AS NOTED.

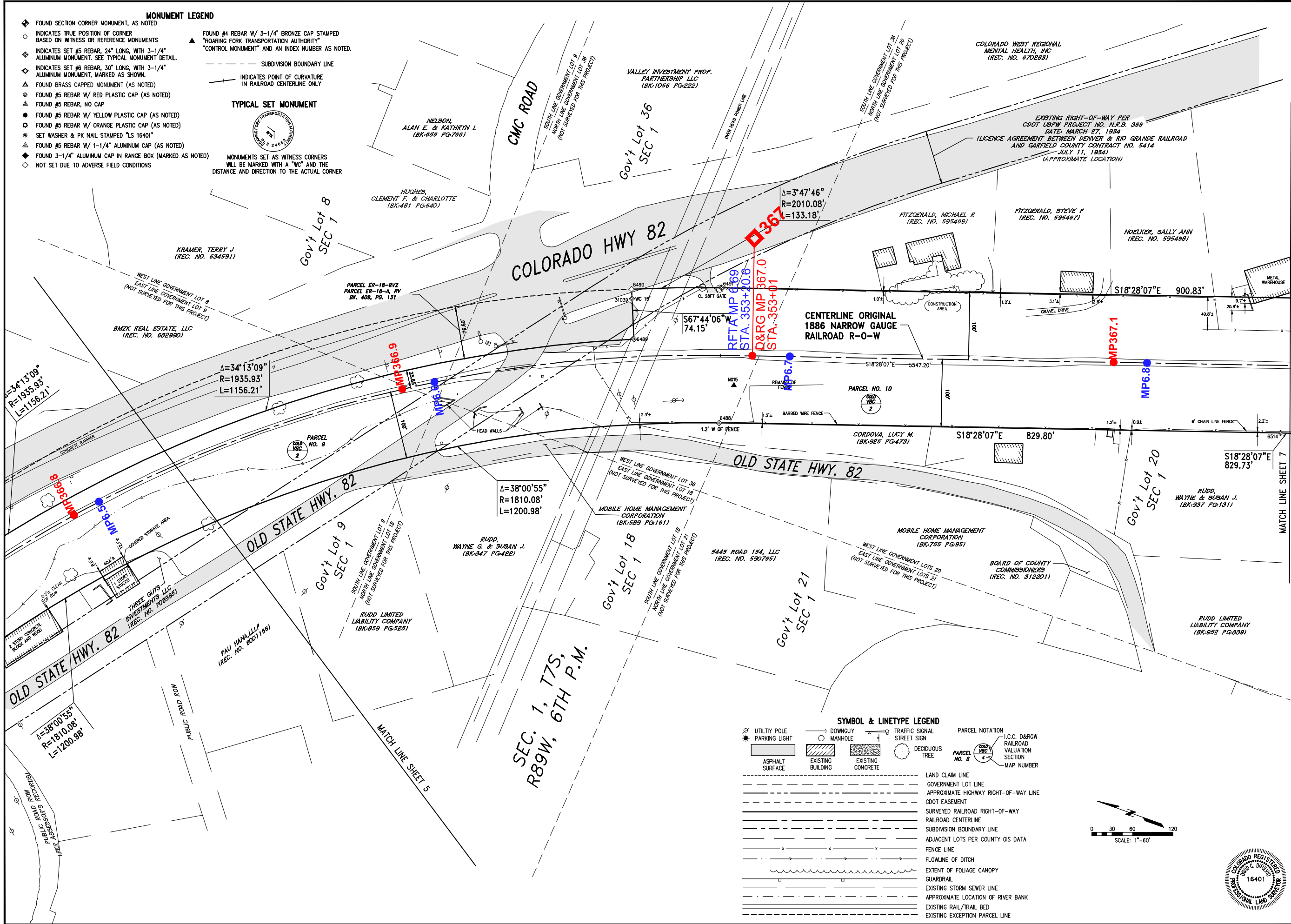
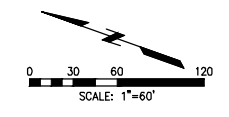
--- SUBDIVISION BOUNDARY LINE

⤴ INDICATES POINT OF CURVATURE IN RAILROAD CENTERLINE ONLY

**TYPICAL SET MONUMENT**

MONUMENTS SET AS WITNESS CORNERS WILL BE MARKED WITH A "WC" AND THE DISTANCE AND DIRECTION TO THE ACTUAL CORNER

- SYMBOL & LINETYPE LEGEND**
- UTILITY POLE
  - PARKING LIGHT
  - ASPHALT SURFACE
  - DOWNGUY
  - MANHOLE
  - EXISTING BUILDING
  - EXISTING CONCRETE
  - TRAFFIC SIGNAL
  - STREET SIGN
  - DECIDUOUS TREE
  - LAND CLAIM LINE
  - GOVERNMENT LOT LINE
  - APPROXIMATE HIGHWAY RIGHT-OF-WAY LINE
  - CDOT EASEMENT
  - SURVEYED RAILROAD RIGHT-OF-WAY
  - RAILROAD CENTERLINE
  - SUBDIVISION BOUNDARY LINE
  - ADJACENT LOTS PER COUNTY GIS DATA
  - FENCE LINE
  - FLOWLINE OF DITCH
  - EXTENT OF FOLIAGE CANOPY
  - GUARDRAIL
  - EXISTING STORM SEWER LINE
  - APPROXIMATE LOCATION OF RIVER BANK
  - EXISTING RAIL/TRAIL BED
  - EXISTING EXCEPTION PARCEL LINE
- PARCEL NOTATION**
- GOV'T LOT 18 SEC 1
- L.C.C. D&RGW RAILROAD VALUATION SECTION
- MAP NUMBER



11/17/2007 3:11 PM | 11/17/2007 3:11 PM | 11/17/2007 3:11 PM | 11/17/2007 3:11 PM | 11/17/2007 3:11 PM | 11/17/2007 3:11 PM | 11/17/2007 3:11 PM | 11/17/2007 3:11 PM | 11/17/2007 3:11 PM | 11/17/2007 3:11 PM

Rearing Fork Transportation Authority  
0786 Industry Way  
Canonville, CO 81623

Date: 12/17/2007  
Drawn: MCS/01/JH  
Checked: DCD/DW  
Book No.: 2184

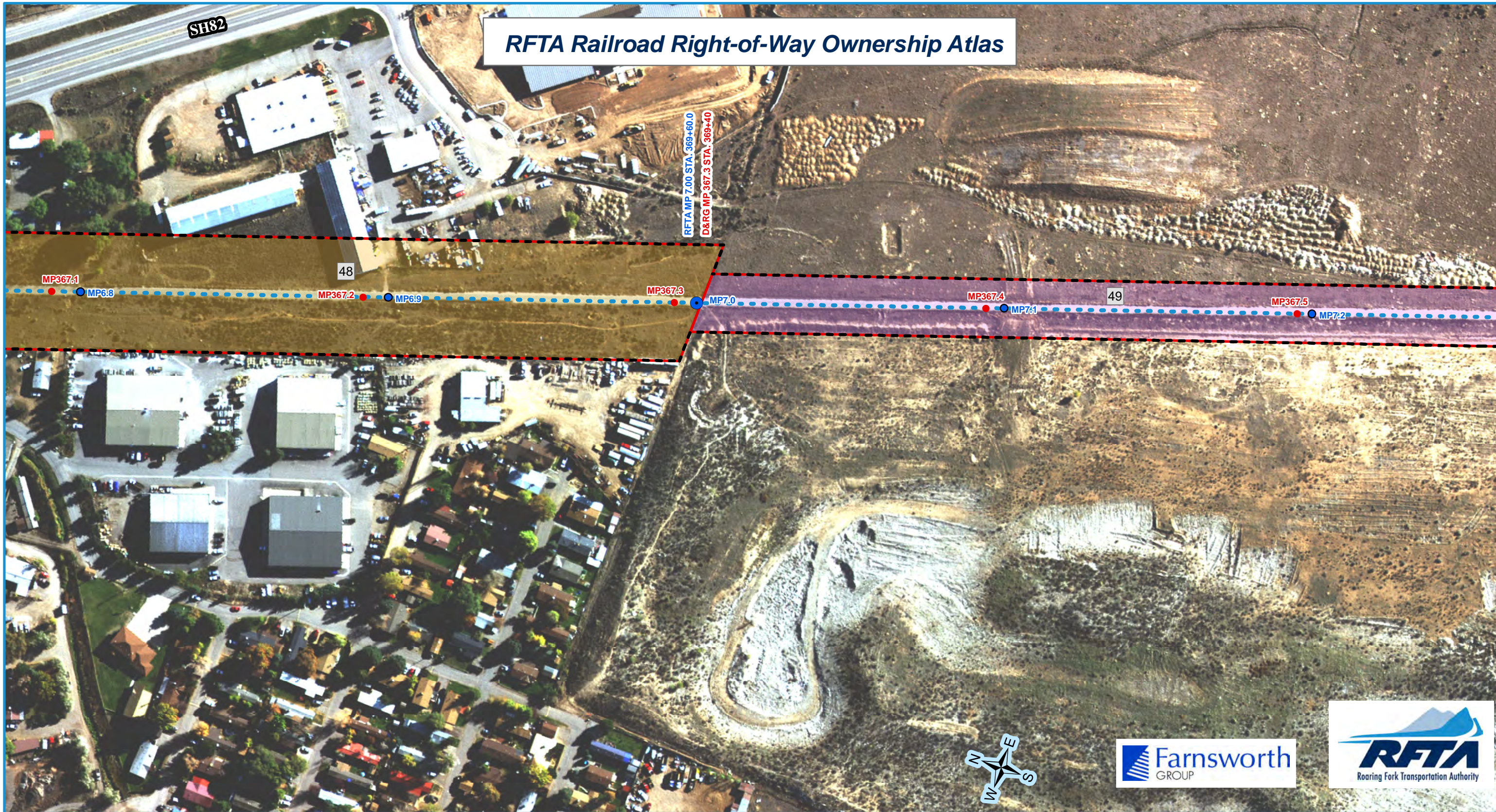
**Farnsworth GROUP**  
ENGINEER, ARCHITECT, SURVEYOR, SCIENTIST  
8055 EAST PLUMS AVENUE, SUITE 800, DENVER, COLORADO 80237  
(303) 672-1837 / (303) 672-0070 Fax

**Railroad ROW Survey - Cattle Creek Segment  
Portion of Former Denver & Rio Grande Railroad  
Aspen Branch Right-Of-Way**

Section 96, T6S, R89W, 6th P.M. and  
Section 96, T6S, R89W, 6th P.M., and  
R89W, 6th P.M., & Section 7, & 18, T7S, R88W, 6th P.M.  
Garfield County, State of Colorado

Project No.: 3050077  
SHEET 6 OF 12  
OVERALL SHEET 28 OF 126

# RFTA Railroad Right-of-Way Ownership Atlas



- RFTA Mileposts**
- Mile
  - Tenth
- D&RG Mileposts**
- Mile
  - Tenth
  - Conservation Covenant Area Begin/End
- Conservation Covenant Area Hatch

- RFTA ROW Centerline
- RFTA ROW Line
- Parcel Division Lines
- Municipal Limits

- Parcel - Type**
- |   |                        |
|---|------------------------|
| ■ | 4 - Adverse Possession |
| ■ | 5 - Easement           |
| ■ | 1 - Grant              |
| ■ | 6 - Other              |
| ■ | 2 - Fee                |

- 1 = Gov't Congressional Grant = Railroad Land Grant (Limited Fee or Fee Simple-Determinant)
- 2 = Fee/Deeded
- 4 = Prescriptive Right/Adverse Possession
- 5 = Easement
- 6 = Other ( License, Contract, Permit, Ordinance, Court Decree, Charter, State PUC Decision [Administrative Law Decision] etc.)

Parcel Number Label: 68

Aerial background: Hexagon Valtus Aerial Imagery - 1 foot - Sept. 2017

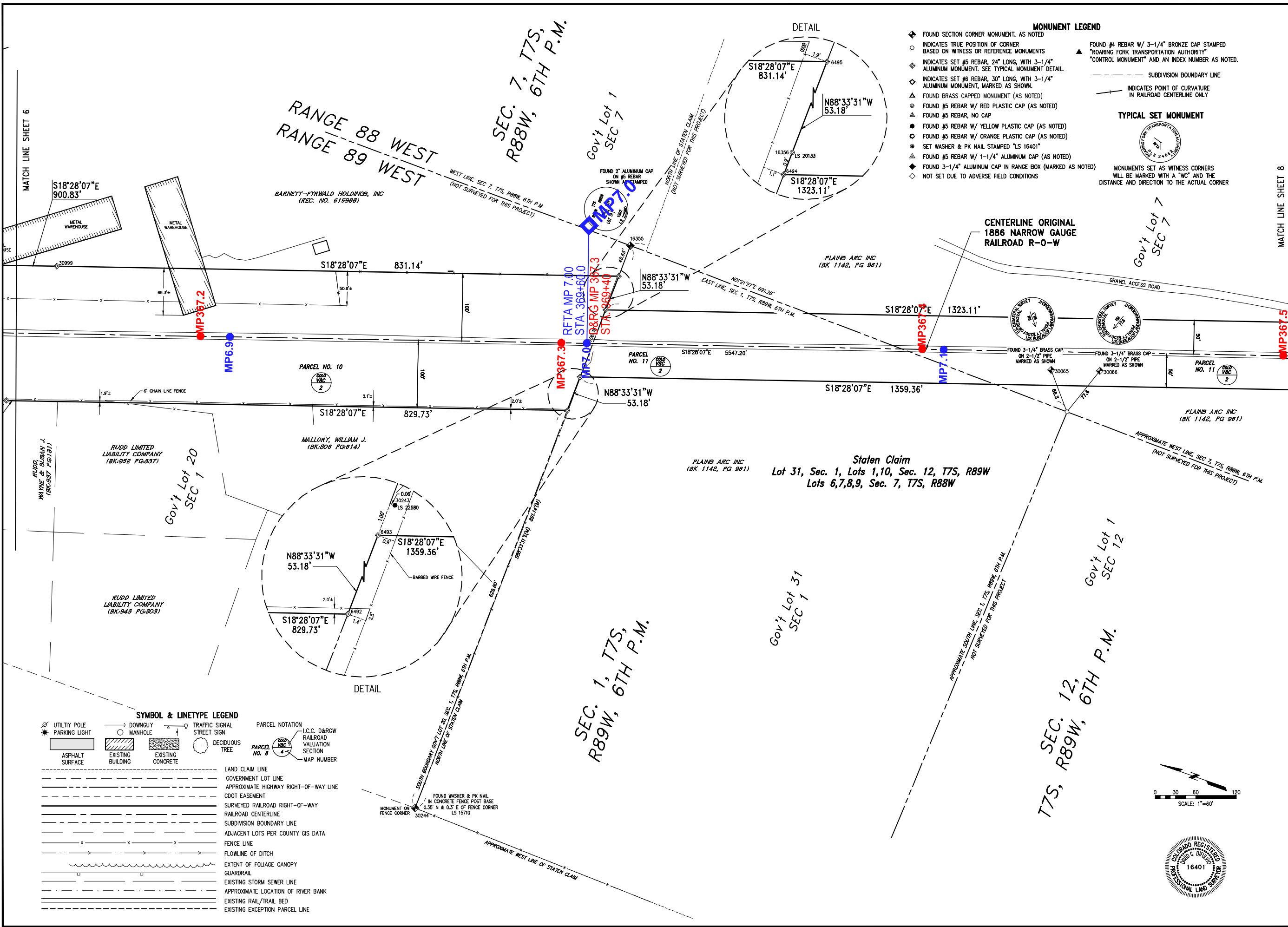
1 inch = 160 feet

0 50 100 Feet

0 120 Feet

0 40 80 120 160 Feet

Rev. 1/8/2020



<b>Roaring Fork Transportation Authority</b> 0786 Industry Way Carbondale, CO 81623	Date: 12/17/2007 Drawn: MCS/JY/JH Checked: DCD/DW Book No.: 2184
<b>Farnsworth GROUP</b> ENGINEER, ARCHITECT, SURVEYOR, SCIENTIST 8555 EAST TULSA AVENUE, SUITE 500, DENVER, COLORADO 80237 (303) 692-9837 / (303) 692-6272 Fax, www.fg-w.com	Project No.: <b>305007.7</b> SHEET 7 OF 12 OVERALL SHEET 29 OF 126

**Railroad ROW Survey - Cattle Creek Segment**  
**Portion of Former Denver & Rio Grande Railroad Aspen Branch Right-Of-Way**  
 Section 9, 6, 16, 8, 9, & 7, 6th P.M. and R89W, 6th P.M., & Section 7, 8, 9, 18, T7S, R88W, 6th P.M., Garfield County, State of Colorado

# RFTA Railroad Right-of-Way Ownership Atlas



- RFTA Mileposts**
- Mile
  - Tenth
- D&RG Mileposts**
- Mile
  - Tenth
  - Conservation Covenant Area Begin/End
- □ □ Conservation Covenant Area Hatch

- RFTA ROW Centerline
- RFTA ROW Line
- Parcel Division Lines
- Municipal Limits

- Parcel - Type**
- 1 - Grant
  - 2 - Fee
  - 3 - Adverse Possession
  - 4 - Easement
  - 5 - Easement
  - 6 - Other

- 1 = Gov't Congressional Grant = Railroad Land Grant (Limited Fee or Fee Simple-Determinant)
- 2 = Fee/Deeded
- 4 = Prescriptive Right/Adverse Possession
- 5 = Easement
- 6 = Other ( License, Contract, Permit, Ordinance, Court Decree, Charter, State PUC Decision [Administrative Law Decision] etc.)

Parcel Number Label: 68

Aerial background: Hexagon Valtus Aerial Imagery - 1 foot - Sept. 2017

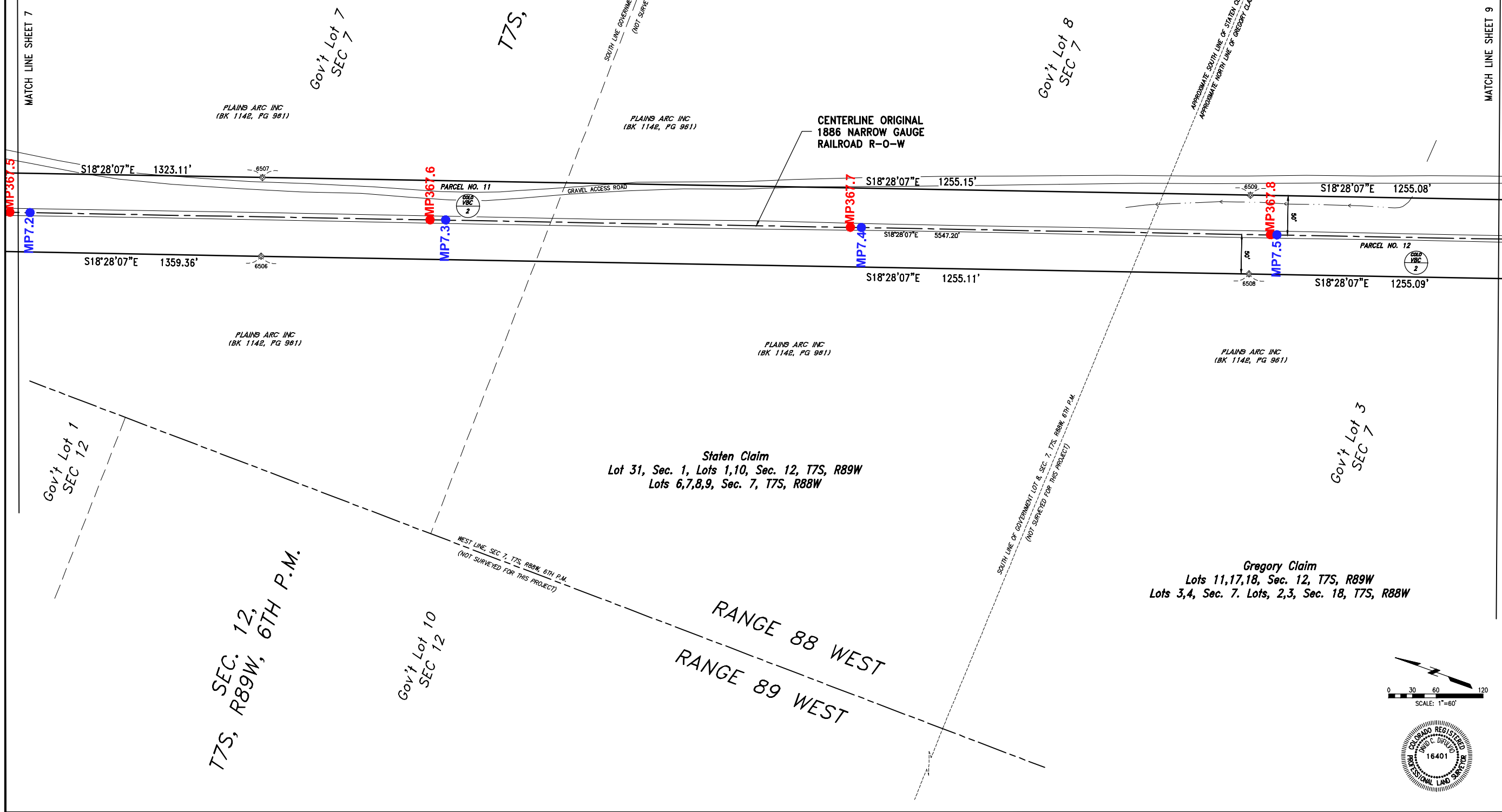


Rev. 1/8/2020

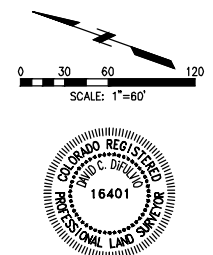


SYMBOL & LINETYPE LEGEND	
	UTILITY POLE
	PARKING LIGHT
	ASPHALT SURFACE
	DOWNGUY MANHOLE
	EXISTING BUILDING
	EXISTING CONCRETE
	DECIDUOUS TREE
	PARCEL NOTATION
	L.C.C. D&RGW RAILROAD VALUATION SECTION
	MAP NUMBER
	LAND CLAIM LINE
	GOVERNMENT LOT LINE
	APPROXIMATE HIGHWAY RIGHT-OF-WAY LINE
	CDOT EASEMENT
	SURVEYED RAILROAD RIGHT-OF-WAY
	RAILROAD CENTERLINE
	SUBDIVISION BOUNDARY LINE
	ADJACENT LOTS PER COUNTY GIS DATA
	FENCE LINE
	FLOWLINE OF DITCH
	EXTENT OF FOLIAGE CANOPY
	GUARDRAIL
	EXISTING STORM SEWER LINE
	APPROXIMATE LOCATION OF RIVER BANK
	EXISTING RAIL/TRAIL BED
	EXISTING EXCEPTION PARCEL LINE

MONUMENT LEGEND	
	FOUND SECTION CORNER MONUMENT, AS NOTED
	INDICATES TRUE POSITION OF CORNER BASED ON WITNESS OR REFERENCE MONUMENTS
	INDICATES SET #5 REBAR, 24" LONG, WITH 3-1/4" ALUMINUM MONUMENT. SEE TYPICAL MONUMENT DETAIL.
	INDICATES SET #6 REBAR, 30" LONG, WITH 3-1/4" ALUMINUM MONUMENT, MARKED AS SHOWN.
	FOUND BRASS CAPPED MONUMENT (AS NOTED)
	FOUND #5 REBAR W/ RED PLASTIC CAP (AS NOTED)
	FOUND #5 REBAR, NO CAP
	FOUND #5 REBAR W/ YELLOW PLASTIC CAP (AS NOTED)
	FOUND #5 REBAR W/ ORANGE PLASTIC CAP (AS NOTED)
	SET WASHER & PK NAIL STAMPED "LS 16401"
	FOUND #5 REBAR W/ 1-1/4" ALUMINUM CAP (AS NOTED)
	FOUND 3-1/4" ALUMINUM CAP IN RANGE BOX (MARKED AS NOTED)
	NOT SET DUE TO ADVERSE FIELD CONDITIONS
	FOUND #4 REBAR W/ 3-1/4" BRONZE CAP STAMPED "ROARING FORK TRANSPORTATION AUTHORITY CONTROL MONUMENT" AND AN INDEX NUMBER AS NOTED.
	SUBDIVISION BOUNDARY LINE
	INDICATES POINT OF CURVATURE IN RAILROAD CENTERLINE ONLY
TYPICAL SET MONUMENT	
MONUMENTS SET AS WITNESS CORNERS WILL BE MARKED WITH A "WC" AND THE DISTANCE AND DIRECTION TO THE ACTUAL CORNER	

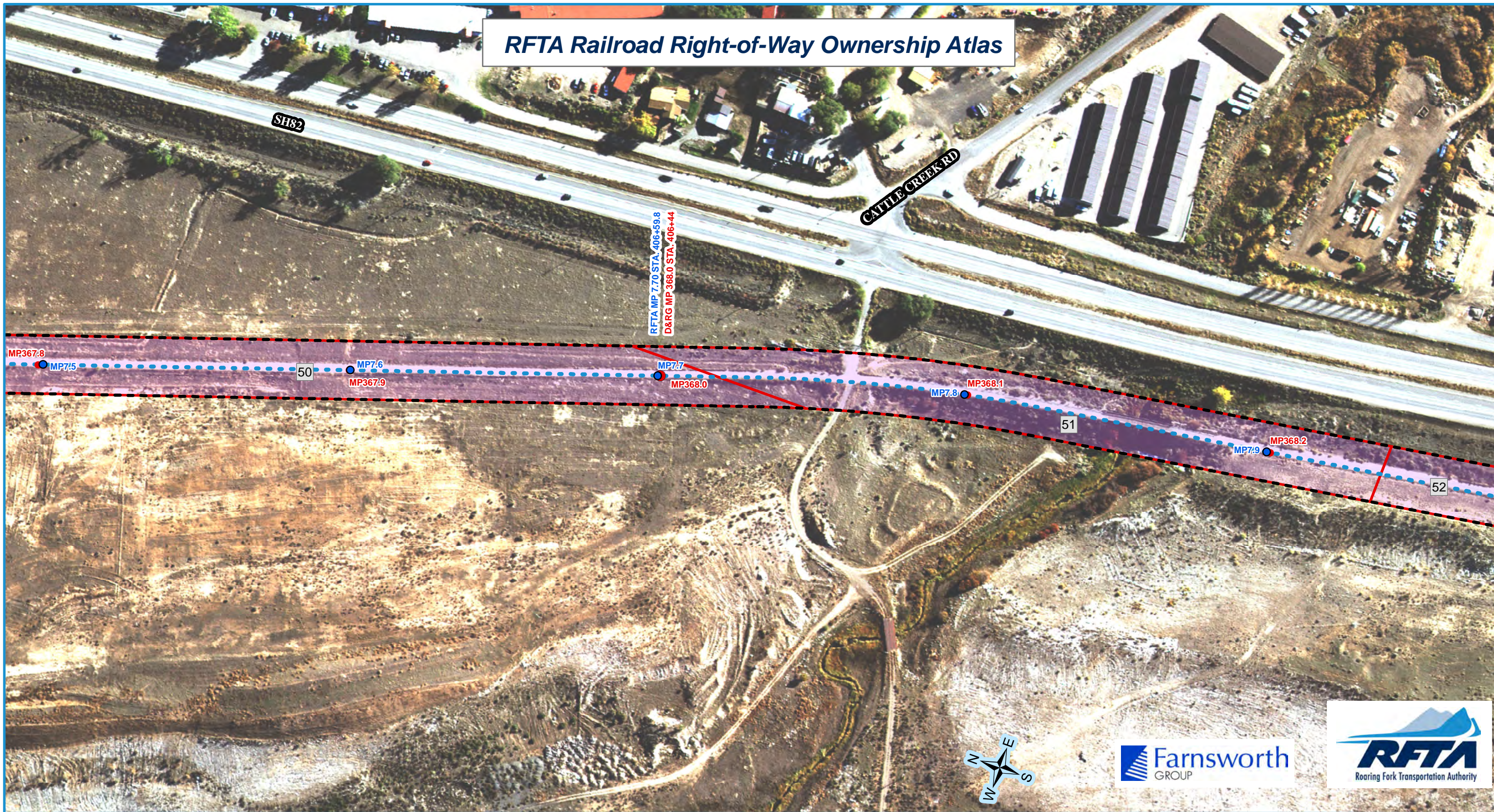


Xref Files: \\fhs-hous-1\volpork\advertising\ |  
 C:\Users\j\p\3003\3003\3003 - RFA Contract 13-03 - Rio Grande Trail ROW from Development\Copy\Map\Map 1\1\2016 3:11 PM |



<p><b>Railroad ROW Survey - Cattle Creek Segment</b>  <b>Portion of Former Denver &amp; Rio Grande Railroad</b>  <b>Aspen Branch Right-Of-Way</b>        Section 96, T6S, R89W, 6th P.M. and        R89W, 6th P.M. &amp; Section 7 &amp; 18, T7S, R88W, 6th P.M.        Garfield County, State of Colorado</p>	<p><b>Farnsworth GROUP</b>        ENGINEERS        ARCHITECTS        SURVEYORS        SCIENTISTS        8055 EAST TULSA AVENUE, SUITE 800, DENVER, COLORADO 80231        (303) 692-8837 / (303) 692-0070 Fax www.farnsworth.com</p>	<p><b>Roaring Fork Transportation Authority</b>        0786 Industry Way        Canonville, CO 81623</p>																
<p>Date: 12/17/2007        Drawn: MCS/JY/JH        Checked: DCD/DW        Book No.: 2184</p>	<p>Client:</p>	<p>Revision Table:</p> <table border="1" style="font-size: small;"> <thead> <tr> <th>NO.</th> <th>DATE</th> <th>BY</th> <th>DESCRIPTION</th> </tr> </thead> <tbody> <tr> <td>1</td> <td>12/17/07</td> <td>JSH</td> <td>ORIGINAL ISSUE</td> </tr> <tr> <td>2</td> <td>01/10/08</td> <td>MCS</td> <td>REUSE EXCEPTION PARCEL SHEETS 4,5,6</td> </tr> <tr> <td>3</td> <td>12/05/08</td> <td>AFP</td> <td>REVISION FOR CORRECTION DEED</td> </tr> </tbody> </table>	NO.	DATE	BY	DESCRIPTION	1	12/17/07	JSH	ORIGINAL ISSUE	2	01/10/08	MCS	REUSE EXCEPTION PARCEL SHEETS 4,5,6	3	12/05/08	AFP	REVISION FOR CORRECTION DEED
NO.	DATE	BY	DESCRIPTION															
1	12/17/07	JSH	ORIGINAL ISSUE															
2	01/10/08	MCS	REUSE EXCEPTION PARCEL SHEETS 4,5,6															
3	12/05/08	AFP	REVISION FOR CORRECTION DEED															
<p>Project No.: 305007.7        SHEET 8 OF 12        OVERALL SHEET 30 OF 126</p>																		

# RFTA Railroad Right-of-Way Ownership Atlas



- RFTA Mileposts**
- Mile
  - Tenth
- D&RG Mileposts**
- Mile
  - Tenth
  - Conservation Covenant Area Begin/End
- Conservation Covenant Area Hatch

- RFTA ROW Centerline
- RFTA ROW Line
- ▭ Parcel Division Lines
- ▭ Municipal Limits

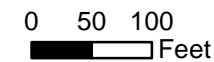
- Parcel - Type**
- |              |           |                        |                        |
|--------------|-----------|------------------------|------------------------|
| 1 - Grant    | 2 - Fee   | 3 - Adverse Possession | 4 - Adverse Possession |
| 5 - Easement | 6 - Other |                        |                        |

- 1 = Gov't Congressional Grant = Railroad Land Grant (Limited Fee or Fee Simple-Determinant)
- 2 = Fee/Deeded
- 4 = Prescriptive Right/Adverse Possession
- 5 = Easement
- 6 = Other ( License, Contract, Permit, Ordinance, Court Decree, Charter, State PUC Decision [Administrative Law Decision] etc.)

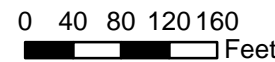
Parcel Number Label: 68

Aerial background: Hexagon Valtus Aerial Imagery - 1 foot - Sept. 2017

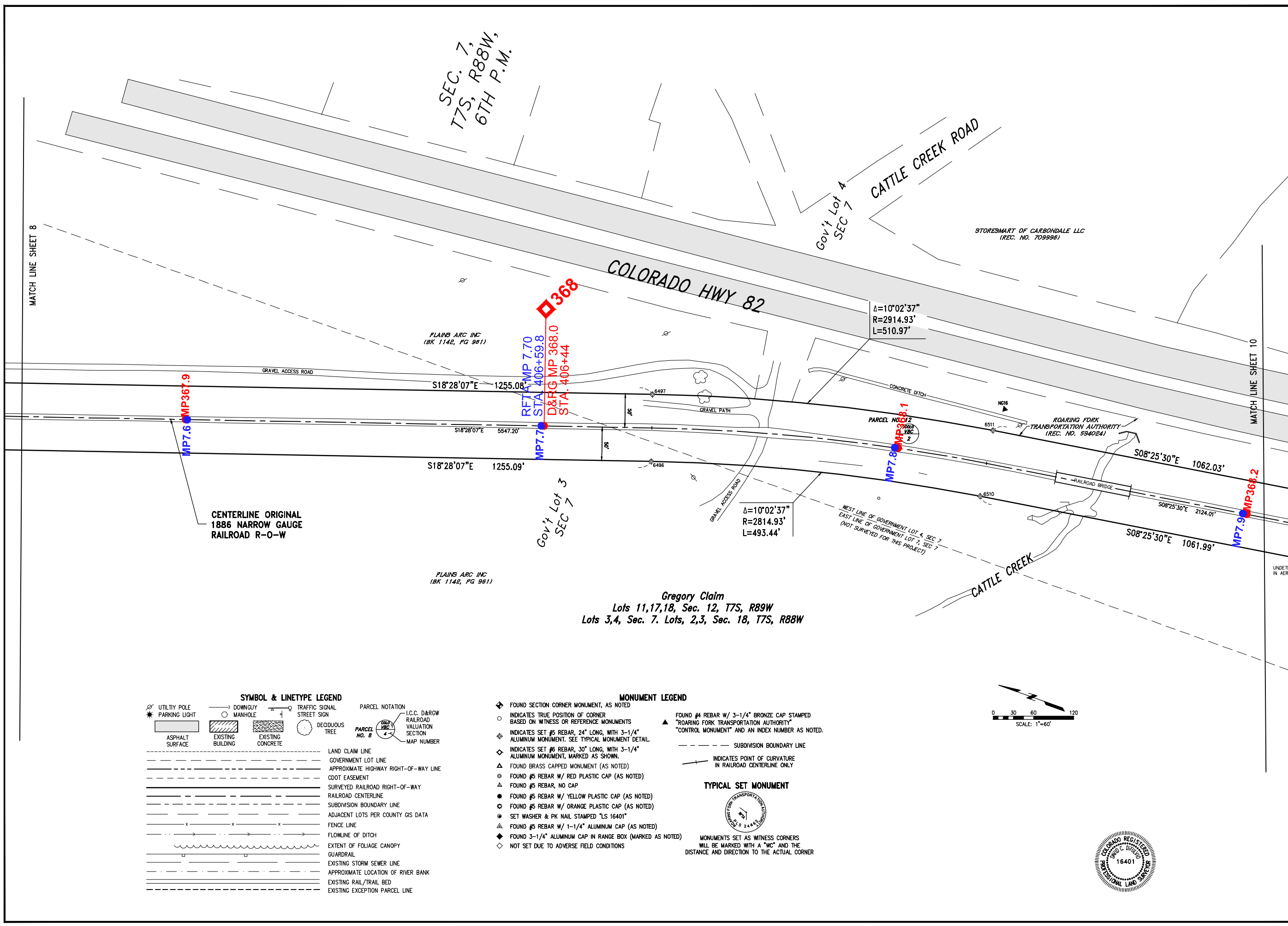
1 inch = 160 feet



0 120 Feet

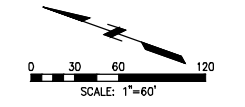
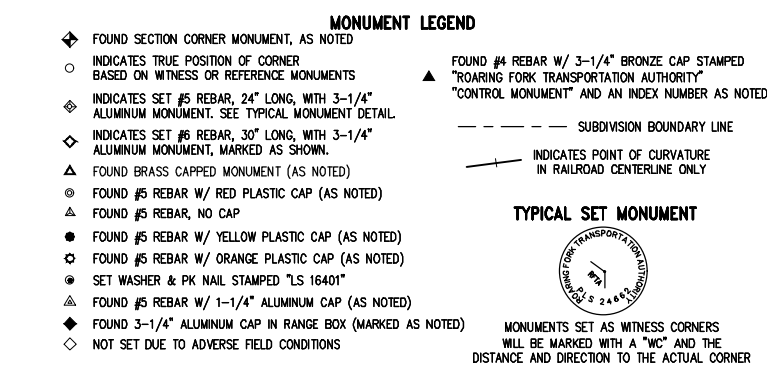
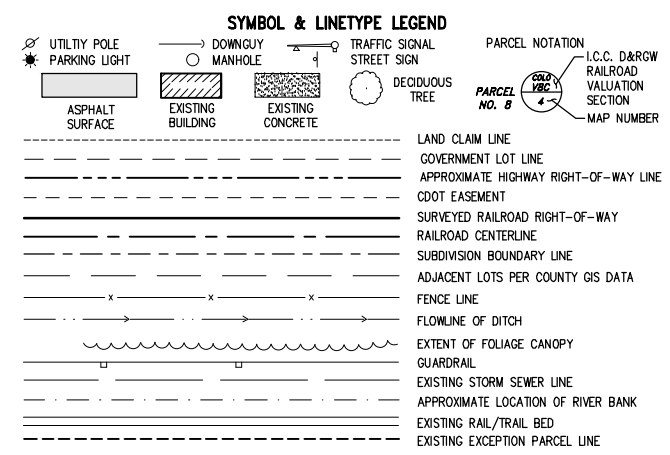


Rev. 1/8/2020



CENTERLINE ORIGINAL 1886 NARROW GAUGE RAILROAD R-O-W

Gregory Claim  
Lots 11,17,18, Sec. 12, T7S, R89W  
Lots 3,4, Sec. 7. Lots, 2,3, Sec. 18, T7S, R88W



ISSUE	Date	Description
1	12/07/2007	ORIGINAL DRAWING
2	01/10/08	REUSE EXCEPTION PARCEL SHEETS 4,5,6
3	12/05/08	REVISION FOR CORRECTION DEED

Roaring Fork  
Transportation Authority  
0786 Industry Way  
Carbondale, CO 81623

Date: 12/07/2007  
Drawn: MCG/JY/JH  
Checked: DCD/DW  
Book No.: 2184

**Farnsworth**  
GROUP  
ENGINEERS  
ARCHITECTS  
SURVEYORS  
SCIENTISTS  
8055 EAST TULSA AVENUE, SUITE 800, DENVER, COLORADO 80237  
(303) 692-8887 / (303) 692-0470 Fax www.fwg.com

**Railroad ROW Survey - Cattle Creek Segment**  
**Portion of Former Denver & Rio Grande Railroad**  
**Aspen Branch Right-Of-Way**  
Section 9, 16, T8S, R89W, 6th P.M. and  
R89W, 6th P.M., & Section 7, & 18, T7S, R88W, 6th P.M.  
Garfield County, State of Colorado

# RFTA Railroad Right-of-Way Ownership Atlas



- RFTA Mileposts**
- Mile
  - Tenth
- D&RG Mileposts**
- Mile
  - Tenth
  - Conservation Covenant Area Begin/End
- Conservation Covenant Area Hatch

- RFTA ROW Centerline
- - - RFTA ROW Line
- Parcel Division Lines
- Municipal Limits

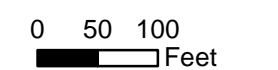
- Parcel - Type**
- |   |   |
|---|---|
| <p><b>Type</b></p> <ul style="list-style-type: none"> <li><span style="background-color: #FFD700; border: 1px solid black; display: inline-block; width: 15px; height: 10px; vertical-align: middle;"></span> 1 - Grant</li> <li><span style="background-color: #FFB6C1; border: 1px solid black; display: inline-block; width: 15px; height: 10px; vertical-align: middle;"></span> 2 - Fee</li> </ul> | <ul style="list-style-type: none"> <li><span style="background-color: #FFB6C1; border: 1px solid black; display: inline-block; width: 15px; height: 10px; vertical-align: middle;"></span> 4 - Adverse Possession</li> <li><span style="background-color: #ADD8E6; border: 1px solid black; display: inline-block; width: 15px; height: 10px; vertical-align: middle;"></span> 5 - Easement</li> <li><span style="background-color: #FFFFE0; border: 1px solid black; display: inline-block; width: 15px; height: 10px; vertical-align: middle;"></span> 6 - Other</li> </ul> |
|---|---|

- 1 = Gov't Congressional Grant = Railroad Land Grant (Limited Fee or Fee Simple-Determinant)
- 2 = Fee/Deeded
- 4 = Prescriptive Right/Adverse Possession
- 5 = Easement
- 6 = Other ( License, Contract, Permit, Ordinance, Court Decree, Charter, State PUC Decision [Administrative Law Decision] etc.)

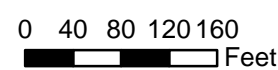
Parcel Number Label: 68

Aerial background: Hexagon Valtus Aerial Imagery - 1 foot - Sept. 2017

1 inch = 160 feet

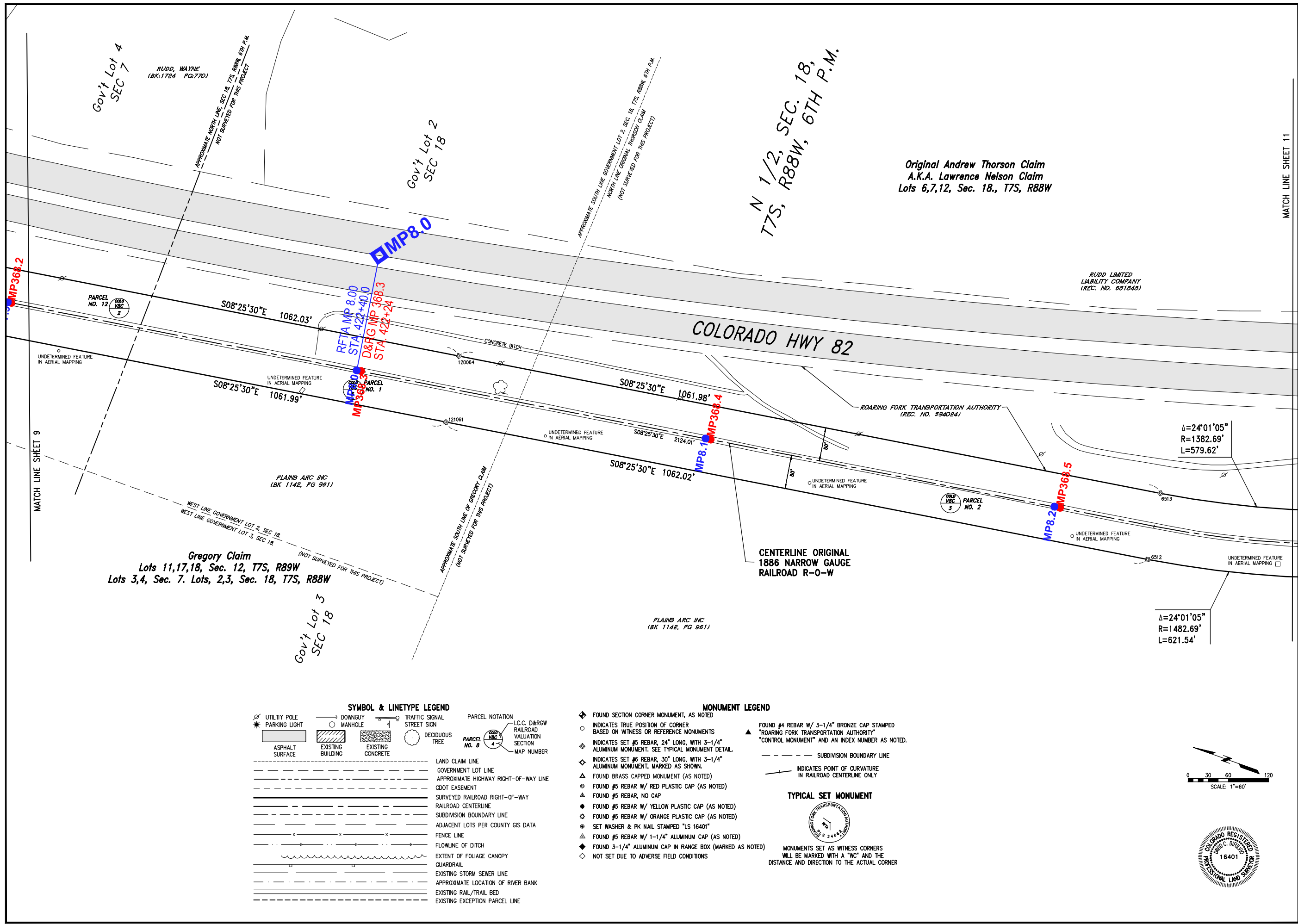


0 120 Feet



Rev. 1/8/2020





**SYMBOL & LINETYPE LEGEND**

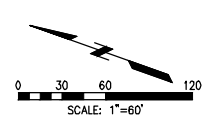
	UTILITY POLE		TRAFFIC SIGNAL
	PARKING LIGHT		STREET SIGN
	ASPHALT SURFACE		DECIDUOUS TREE
	DOWNGUY		PARCEL NOTATION
	MANHOLE		I.C.C. D&RG RAILROAD VALUATION SECTION
	EXISTING BUILDING		MAP NUMBER
	EXISTING CONCRETE		
	LAND CLAIM LINE		
	GOVERNMENT LOT LINE		
	APPROXIMATE HIGHWAY RIGHT-OF-WAY LINE		
	CDOT EASEMENT		
	SURVEYED RAILROAD RIGHT-OF-WAY		
	RAILROAD CENTERLINE		
	SUBDIVISION BOUNDARY LINE		
	ADJACENT LOTS PER COUNTY GIS DATA		
	FENCE LINE		
	FLOWLINE OF DITCH		
	EXTENT OF FOLIAGE CANOPY		
	GUARDRAIL		
	EXISTING STORM SEWER LINE		
	APPROXIMATE LOCATION OF RIVER BANK		
	EXISTING RAIL/TRAIL BED		
	EXISTING EXCEPTION PARCEL LINE		

**MONUMENT LEGEND**

- ◆ FOUND SECTION CORNER MONUMENT, AS NOTED
- INDICATES TRUE POSITION OF CORNER BASED ON WITNESS OR REFERENCE MONUMENTS
- ◇ INDICATES SET #5 REBAR, 24" LONG, WITH 3-1/4" ALUMINUM MONUMENT. SEE TYPICAL MONUMENT DETAIL.
- ◇ INDICATES SET #6 REBAR, 30" LONG, WITH 3-1/4" ALUMINUM MONUMENT, MARKED AS SHOWN.
- ▲ FOUND BRASS CAPPED MONUMENT (AS NOTED)
- FOUND #5 REBAR W/ RED PLASTIC CAP (AS NOTED)
- ▲ FOUND #5 REBAR, NO CAP
- FOUND #5 REBAR W/ YELLOW PLASTIC CAP (AS NOTED)
- FOUND #5 REBAR W/ ORANGE PLASTIC CAP (AS NOTED)
- SET WASHER & PK NAIL STAMPED "L5 16401"
- ▲ FOUND #5 REBAR W/ 1-1/4" ALUMINUM CAP (AS NOTED)
- ◆ FOUND 3-1/4" ALUMINUM CAP IN RANGE BOX (MARKED AS NOTED)
- ◇ NOT SET DUE TO ADVERSE FIELD CONDITIONS

**TYPICAL SET MONUMENT**

MONUMENTS SET AS WITNESS CORNERS WILL BE MARKED WITH A "WC" AND THE DISTANCE AND DIRECTION TO THE ACTUAL CORNER



**ISSUE**

By	Date	Description
JSH	12/17/07	ORIGINAL ISSUE
MCS	01/10/08	REVISE EXCEPTION PARCEL SHEETS 4,5,6
APF	12/09/08	REVISION FOR CORRECTION DEED

**Client:** Roaring Fork Transportation Authority  
0786 Industry Way  
Carbondale, CO 81623

**Date:** 12/17/2007  
**Drawn:** MCS/JY/JH  
**Checked:** DCD/DW  
**Book No.:** 2184

**Farnsworth GROUP**

ENGINEER ARCHITECT SURVEYOR SCIENTIST

8055 EAST TULSA AVENUE, SUITE 800, DENVER, COLORADO 80237  
(303) 692-8887 / (303) 692-0470 Fax www.fw.com

**Railroad ROW Survey - Cattle Creek Segment**  
**Portion of Former Denver & Rio Grande Railroad Aspen Branch Right-Of-Way**  
Section 06, T8S, R88W, 6th P.M. and Section 07, T8S, R88W, 6th P.M. and R88W, 6th P.M. & Section 7, T8S, R88W, 6th P.M. Garfield County, State of Colorado

Project No.: 3050077

SHEET 10 OF 12  
OVERALL SHEET 32 OF 126

# RFTA Railroad Right-of-Way Ownership Atlas



**RFTA Mileposts**  
 ● Mile  
 ● Tenth

**D&RG Mileposts**  
 ● Mile  
 ● Tenth  
 ● Conservation Covenant Area Begin/End

□ Conservation Covenant Area Hatch

● RFTA ROW Centerline  
 - - RFTA ROW Line  
 □ Parcel Division Lines  
 i Municipal Limits

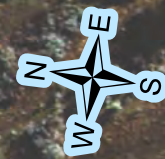
**Parcel - Type**

1 - Grant	2 - Fee	3 - Adverse Possession	4 - Adverse Possession
5 - Easement	6 - Other		

1 = Gov't Congressional Grant = Railroad Land Grant (Limited Fee or Fee Simple-Determinant)  
 2 = Fee/Deeded  
 4 = Prescriptive Right/Adverse Possession  
 5 = Easement  
 6 = Other ( License, Contract, Permit, Ordinance, Court Decree, Charter, State PUC Decision [Administrative Law Decision] etc.)

Parcel Number Label: 68

Aerial background: Hexagon Valtus Aerial Imagery - 1 foot - Sept. 2017



1 inch = 160 feet

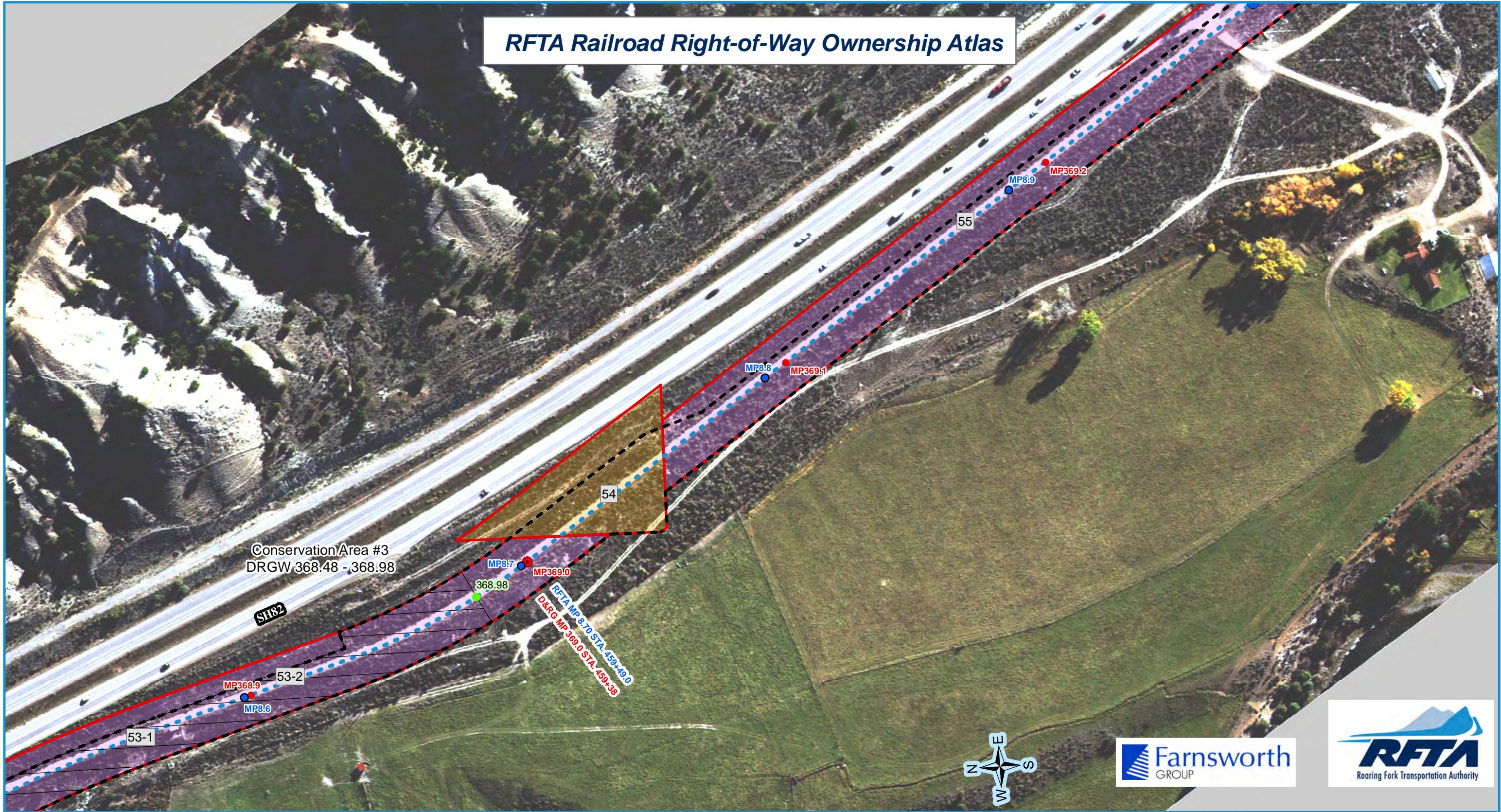
0 50 100 Feet

0 40 80 120 160 Feet

Rev. 1/8/2020



# RFTA Railroad Right-of-Way Ownership Atlas



- RFTA Mileposts**
- Mile
  - Tenth
- D&RG Mileposts**
- Mile
  - Tenth
  - Conservation Covenant Area Begin/End
- □ □ Conservation Covenant Area Hatch

- RFTA ROW Centerline
- RFTA ROW Line
- ▭ Parcel Division Lines
- ▭ Municipal Limits

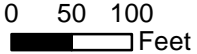
- Parcel - Type**
- Type**
- 1 - Grant
  - 2 - Fee
  - 3 - Adverse Possession
  - 4 - Easement
  - 5 - Easement
  - 6 - Other

- 1 = Gov't Congressional Grant = Railroad Land Grant (Limited Fee or Fee Simple-Determinant)
- 2 = Fee/Deeded
- 4 = Prescriptive Right/Adverse Possession
- 5 = Easement
- 6 = Other ( License, Contract, Permit, Ordinance, Court Decree, Charter, State PUC Decision [Administrative Law Decision] etc.)

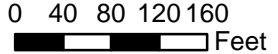
Parcel Number Label: 68

Aerial background: Hexagon Valtus Aerial Imagery - 1 foot - Sept. 2017

1 inch = 160 feet



0 120 Feet



Rev. 1/8/2020



