

Mid Valley Trails Committee Meeting Minutes

March 23rd 2023

7:30am-8:54am

RFTA Office – 1340 Main St Carbondale, CO 81623

Webex link: <https://rfta.webex.com/rfta/j.php?MTID=m8735889564752c8bfb6765869049936b>

INVITED ATTENDEES

- George Trantow – MVTC Chair
- Phillip Ring – MVTC Treasurer
- Brian Schaefer – MVTC Member
- Alan Luu - MVTC Member
- Temple Glassier- MVTC Project Manger
- Rebecca Schild – Roaring Fork Outdoor Volunteers
- Michelle Daniels – Roaring Fork Outdoor Volunteers
- Mike Pritchard, Roaring Fork Mountain Bike Association
- Karin Offield, Roaring Fork Valley Horse Council
- Michelle Thibeault, Town of Basalt Planning Director
- Jill Klosterman, Eagle County
- Angela Henderson, RFTA
- Brett Meredith, RFTA
- Abbey Pascoe, RFTA
- Sarah Faichney, RFTA
- Jud Lang, RFTA

Who Attended

- George Trantow – MVTC Chair
- Phillip Ring – MVTC Treasurer
- Alan Luu - MVTC Member
- Perry Kleespies – MVTC Potential New Member
- Temple Glassier- MVTC Project Manger
- Mike Pritchard, Roaring Fork Mountain Bike Association
- Karin Offield, Roaring Fork Valley Horse Council
- Rita Fulton – Roaring Fork Valley Horse Council
- Michelle Thibeault, Town of Basalt Planning Director
- Angela Henderson, RFTA
- Brett Meredith, RFTA
- Abbey Pascoe, RFTA

- Sarah Faichney, RFTA
- Jud Lang, RFTA

AGENDA

1. Review and approval of February Minutes. **Approved.**
2. Updates from Partnerships with Mid Valley Trail Committee (MVTC)
 - Roaring Fork Mountain Bike Association (RFMBA) Update – Mike Pritchard
 - Crown Trail Project Update

Reference Image A1. – A map that has been approved by the Bureau of Land Management (BLM) in August of 2022 after many years of designs and studies. There were cultural studies completed by archaeologist and studies completed by botanist. The blue lines on the map show approved intended trail projects by the RFMBA on the Crown.

There are 2 projects that MVTC is helping to fund this year on the Crown. The Crown Royale and Imperial Gardens trail. The Crown Royale trail, is a 5.5-mile-long project broken up into 3 sections. Last fall RFMBA finished about 98% of the lower section of the trail. The lower section connects the Buckhorn Traverse trail down to the Rio Grande trail near Rock Bottom Ranch. (Reference Block 4). RFMBA will be working with Rocky Mountain Youth Core (RMYC) to complete the lower section and have it open to the public by mid-April. For the upper and middle sections RFMBA is looking to contract out each section separately, what they are noticing is an increase in cost for trail work. Mike, on behalf of RFMBA, is requesting an additional \$30,000 from MVTC to help cover costs of the upper and middle sections of the Crown Royale trail project. George and Angela agreed that in order to receive additional funding Mike would need to show what RFMBA originally had as a budget, what the new budget is and why there is an increase. Mike agreed to supply the documentation and keep the MVTC informed in the next couple of months of new developments in the budget. The Imperial Gardens trail will be a climbing trail. (Reference section 16, where 8S 87W lays on top) Mike will have volunteers from RMYC to help build this trail on Thursday evenings in May along with some additional help from RFMBA seasonal crew. George asked about other projects on the crown. These projects are aimed to start up in 2024-2025. Innie and outie trail (Reference Block 7) will be a reroute project. Buckhorn Down trail (Reference Block 5) will be a new trail set in place to connect existing trails together. Father of Ginormous trail (Reference Block 18) however is aimed to be finished this spring, RFMBA will be adding cross overs to the trail.
 - Seasonal Trail Crew Program Update- There are some returning crew members from last season and two new crew members so far. Mike is still recruiting, he said experience is not needed because there is on the job training. Mike has noticed as his crew is becoming larger it's not just college kids who are interested, more 30-40yrs old are interested in the jobs, because of this they're requesting higher pay which Mike can justify due to maturity and experience. This summer Mike's crew will be working on deferred maintenance programs on Milk Creek trail and Basalt Mountain trail. They will be working April- October.

- Roaring Fork Valley Horse Council (RFVHC) Update – Karin Offield
 - Asking for MVTC, RFTA, RFMBA, RFOV, student groups and trail association to use the Trails Safe Passing Plan (TSPP). George reminded Karin that MVTC can not approve the use of the signs on public or private lands, the RFVHC would have to get the signs approved by the land owners.
 - Here is the link for the power point presentation on Trails Safe Passing Plan if you would like more information elcr.org/wp-content/uploads/2022/07/TRAILS-SAFE-PASSING-PLAN-7-6-22-Powerpoint-Accessibility-A=pproved-1.pdf (Link is Broken)
 - Here is the link to sign up to use the sign <https://www.rfvhorsecouncil.org/trailassociatelandmanagementteam-membership-form.html> (Link is Broken)
 - Here is the link for final graphics, vector signs and QR code. <https://www.rfvhorsecouncil.org/trails-safe-passing-plan-tspp.html>
 - Here is the link to the American Trails webinar happening on March 30th 2023 if you're interested in learning further about the Trails Safe Passing Plan. <https://www.americantrails.org/training/the-trails-safe-passing-plan-stop-speak-and-stand-back>

- Basalt Parks, Open Space and Trails (POST) Update
 - Trail connection between Mid Valley Center to Willits Lane
Reference image A3. The blue line is the proposed trail from Basalt POST, where the blue line turns on the right is the property the Town of Basalt owns. The pink line is the proposed line from MVTC.
Michelle asked for feedback from MVTC about the proposed blue line. Temple mentioned that the project was originally intended to follow the pink line. Michelle stated the HOA's that the pink lines go through are not sure if they want a public trail that goes behind them. Temple mentioned that there is already a neighborhood trail there. George thinks it would be good to continue the discussion with them because where the blue line ends now directs people into a non-friendly pedestrian area whereas the pink line will take them to a safer area where there is access to We-cycle bikes and a RFTA bus stop. Phillip mentioned it would be great to follow the pink line because then the trail could connect to the trail that loops around the lake that is further up but not shown on this current map. Michelle states she agrees with the feedback and will continue the conversations with the HOA's to get the pink line approved.
 - POST Maintenance and Financial Long Range Plan progress. Basalt POST hired a consultant to figure out a long-range maintenance cost for parks, new facilities and trails. They will be collecting data throughout the year and Michelle will have more information on what they find in the fall. Michelle predicts they will be focusing a lot more on trails then parks next year.
 - Willits Lane Request for Proposal (RFP).
Reference image A2. Shows all the sections and projects that Basalt POST wants to get done this year and the following year. CDOT will be creating employee housing where the blue circle is, Michelle has asked CDOT to keep her in the loop with their pedestrian sidewalk developments. Michelle mentioned every property that is on the purple line has an easement with the Town of Basalt (TOB) to allow a public trail.

Basalt POST should be receiving quotes in the next two months for all of these projects listed, once they have the quotes they can make decisions on what projects are happening this year.

- Basalt's Pursuit of Certification as a Bike Friendly Community. Will officially start in May, more updates to come.
- Update on Midland Ave Streetscape Project. Starting construction next week, for more information visit [Let's Talk Basalt](#).

3. New Business

➤ Temple Glassier

- Potential new member – Perry Kleespies. Approved by MVTC, next is to get the RFTA Board approval.

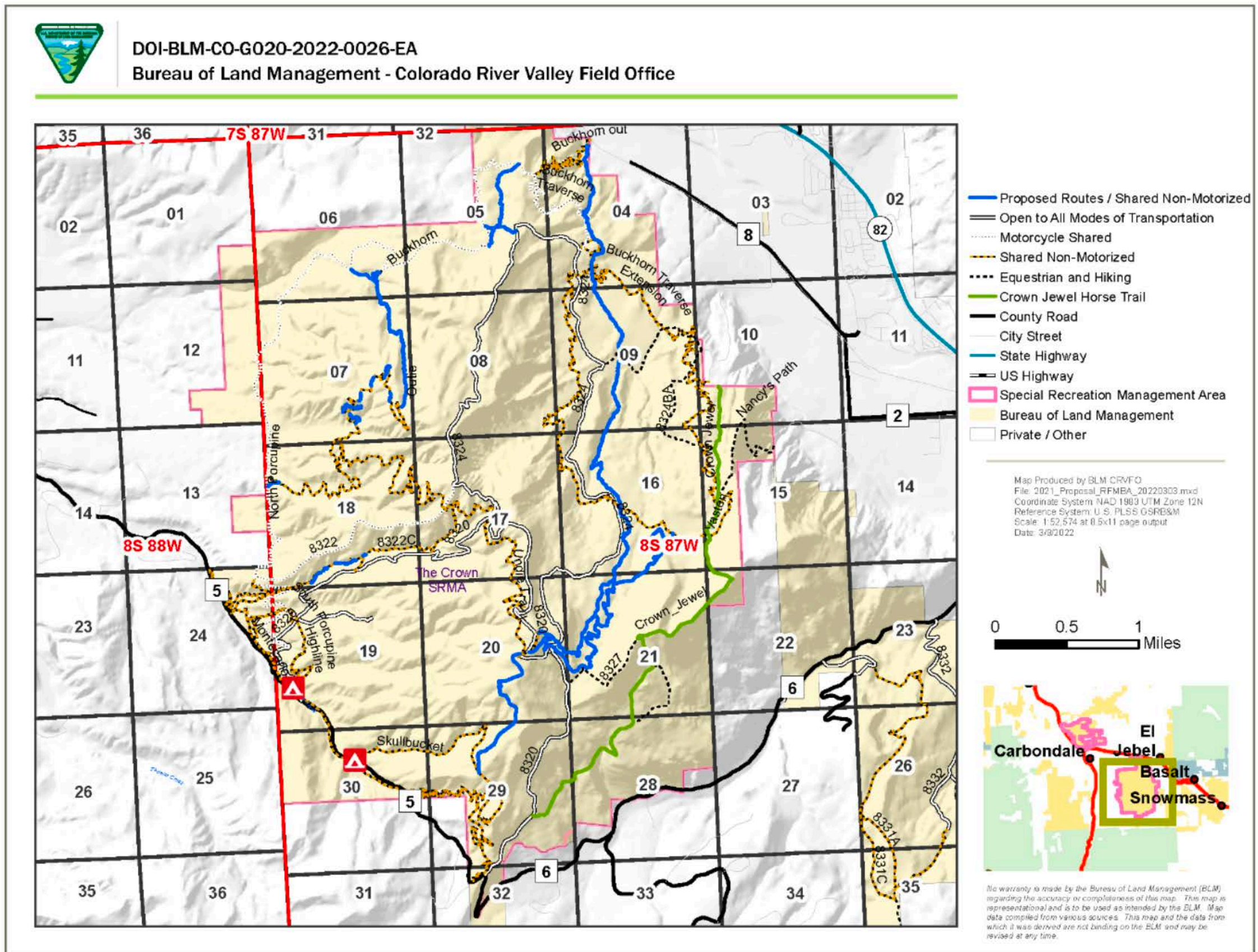
➤ George Trantow

- Recruiting more members. There can be up to 7. Confirm with Susan and Brian if they are still committed to being members.
- Discuss El Jebel to Missouri Heights Trail Connection Project.
This project's focus is to get access to public lands. Sarah needs to look in the MVTC Plan and find the original name for this project.
 - Review access points. There are potential access points on these properties, Shadow rock, Crawford and Ace. George and Temple have tried to get access in the past but were unable due to a miscommunication. George would like to reach out to these property owners again and see if it possible to obtain an easement through one of them. Angela mentioned to get everything in writing from these property owners. The committee decided the first step is to get an easement and then get in contact with the BLM. Perry said he has a friend that is close with Ace and he could help get a meeting scheduled with him. Temple will reach out to Shadow rock and Crawford to schedule a meeting with them to discuss a potential easement. Angela suggested reaching out to someone from Eagle County to make them aware of what this committee is trying to do. Temple stated it is very hard to get someone from Eagle County to respond because she called and it went to voicemail and on the voicemail, it said to send an email and when Temple sent an email there was an autogenerated message that came back and said it could take up to 7 days to get a response. Temple said she will keep trying to reach someone at Eagle County.
 - Reference image A4. This is a map from RFMBA showing potential access from El Jebel to Basalt mountain. The orange and yellow line is a potential route. It is a mixture of old routes and routes created by bulldozers after the wildfire so utility companies could check on their utility poles. Mike suggests making this a hiking trail with a high point and a turnaround while using existing trails
 - Schedule a terrain walk through this spring. Mike suggests to get out on the ground and take a look at the land. The current map is based off of drone footage. Mike suggest while meeting with the property owners ask for permission to access the public lands.

- Sarah Faichney
 - Housekeeping items for the committee.
 - Rules for presenting and participating. **Everyone agreed to the rules. Sarah will have this document posted on RFTA's website.**
 - RFTA is in the process of creating a recruitment flyer. **Sarah shared the document that she sent to the RFTA marketing team in order to make the recruitment flyer. Temple mentioned that its only people who live in the Roaring Fork Valley portion of Eagle county are able to join.**
 - All Mid Valley Trails meeting agenda's minutes and dates are posted here: [Rio Grande Trail Documentation](#). **Angela recommended to reach out to Eagle County and get the MVTC meeting agenda's and minutes posted on the Eagle County website.**

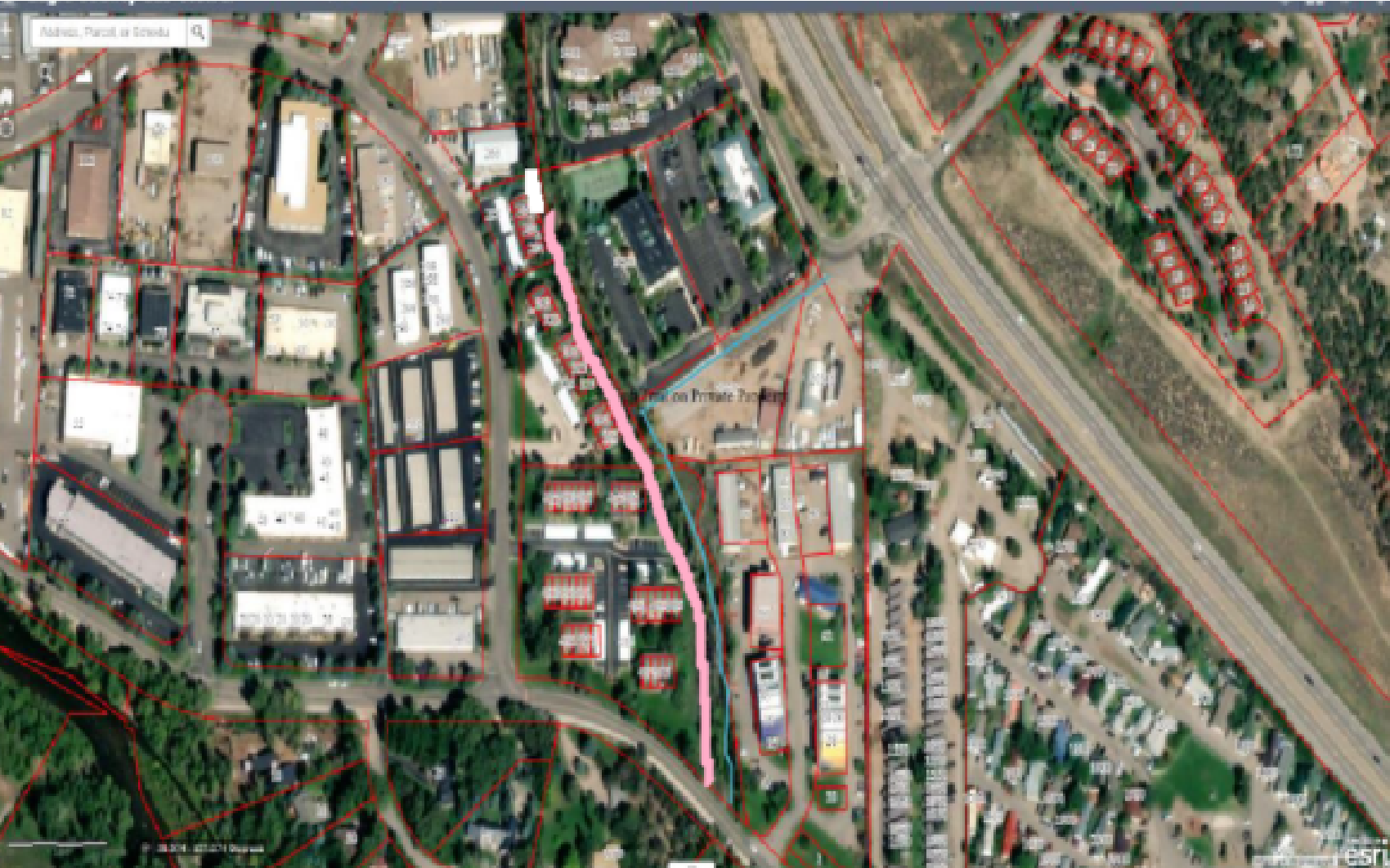
- Items to include in the next meeting
 - El Jebel to Missouri Heights connection project update.
 - Recruiting more members.
 - Discuss Blue Lake to Missouri Heights plots.
 - Updates from RFMBA and Basalt POST on their projects.
 - Maps that were included in this agenda.

Map 1. Overview of the Crown SRMA and the proposed trail additions.



Existing Trail on Private Property

Image A3





EXISTING CONDITIONS

ASPENBASALT TRAILER PARK

Significant pedestrian use to close proximity to Hwy 82

DUROUX PARK

Rafting put-in destination, pocket park size, Hooks Lane bridge

WILLITS PUD

Density and uses increasing including new childcare facility, health clinic and residential

WILLITS DESIGN CENTER

Service truck destination, commercial sector of Basalt's economy

ROUND-A-BOUT

End of trail connection to Highway 82; unclear trail connections to Crown Mnt Park and area businesses



rfmba

ROARING FORK
Mountain Bike Association

El Jebel to Basalt Mountain Trails Connection

This map was created by the
mid valley trails committee and RFMBA.

We seek approvals from USFS, BLM,
Eagle County and El Jebel Tree Farm
for a mountain bike route connection
between El Jebel and the Basalt
Mountain trail system.

1:36,000
1 inch = 3,000 feet

- Proposed MTB Route
- BLM Citizen Recommended Trails (Crown)
- Trails- Aspen/ Pitkin GIS
- Cross country Trails (Aspen/Pitkin GIS)
- Roads (mostly paved)
- WRNF TMP Alt. G (symbology by WRNF)
- Licensed Motorized Only
- Licensed and Unlicensed Allowed
- Motorized Vehicles (under 50' w)
- Two wheeled Vehicles (Motorcycles)
- Mechanized (Bicycles)
- Foot and Horse (animal)
- Managed under special use permit
- Closed to the public
- County Line
- White River National Forest Lands
- Wilderness within WRNF
- BLM Ownership Data**
- Bureau of Land Management
- Private Land (no color)
- State Land
- Parks- Aspen/Pitkin
- Smugler PRA (expanded)
- Smugler Mountain Open Space

Draft v1

rfmba.org

RFMBA's mission is to create and
sustain the best possible mountain
bike trail system and experience in
the Roaring Fork Valley.

- RFMBA**
- Advocacy
 - Planning
 - Trails
 - Education

Data Information:
This map represents data and information
from many sources; errors and omissions
may exist. RFMBA makes no claims to
the accuracy of these maps for any kind
of navigation.

Cartography by: Pablo Siveira
pablo.ca.co@gmail.com 530.864.7492

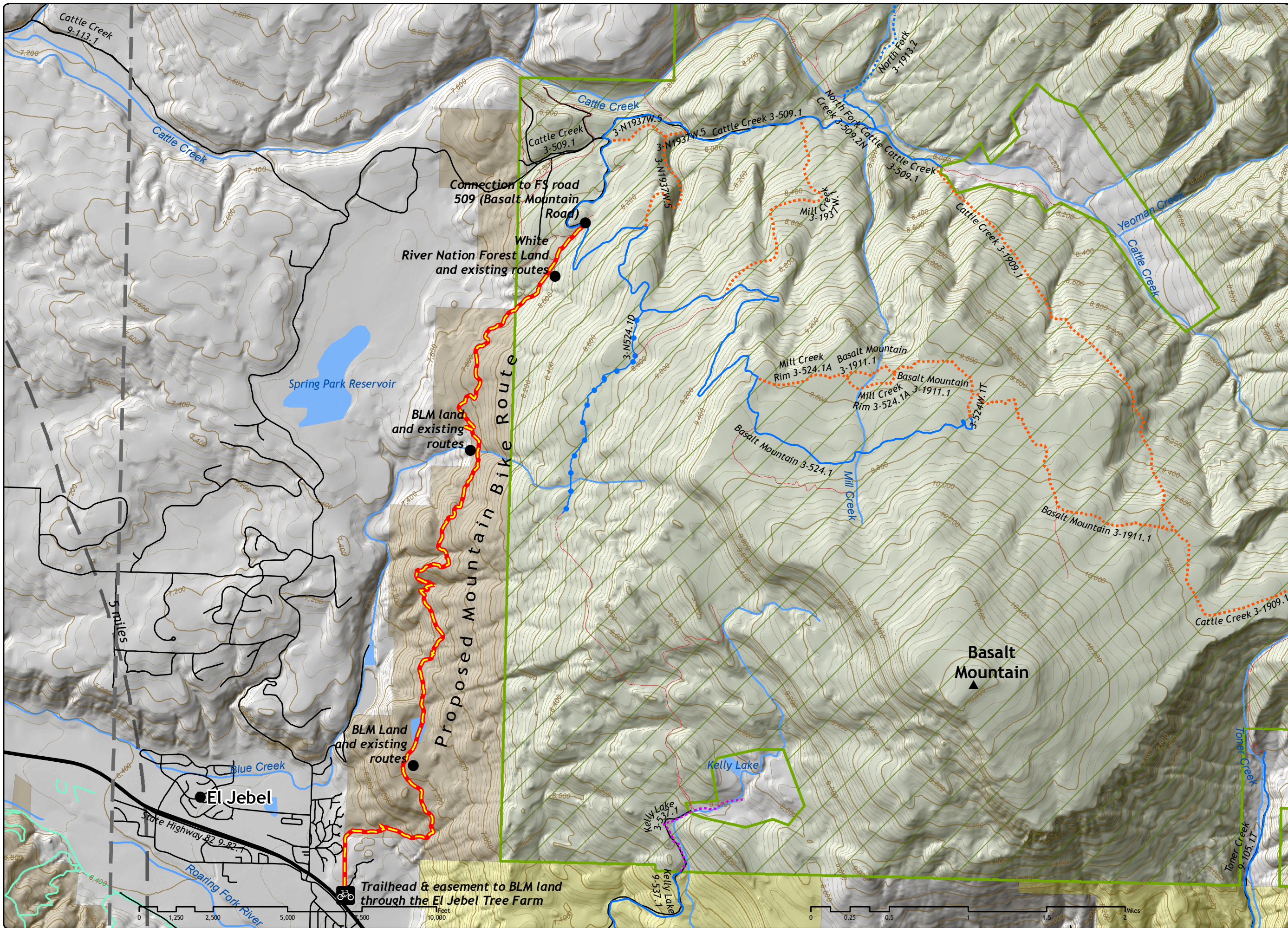
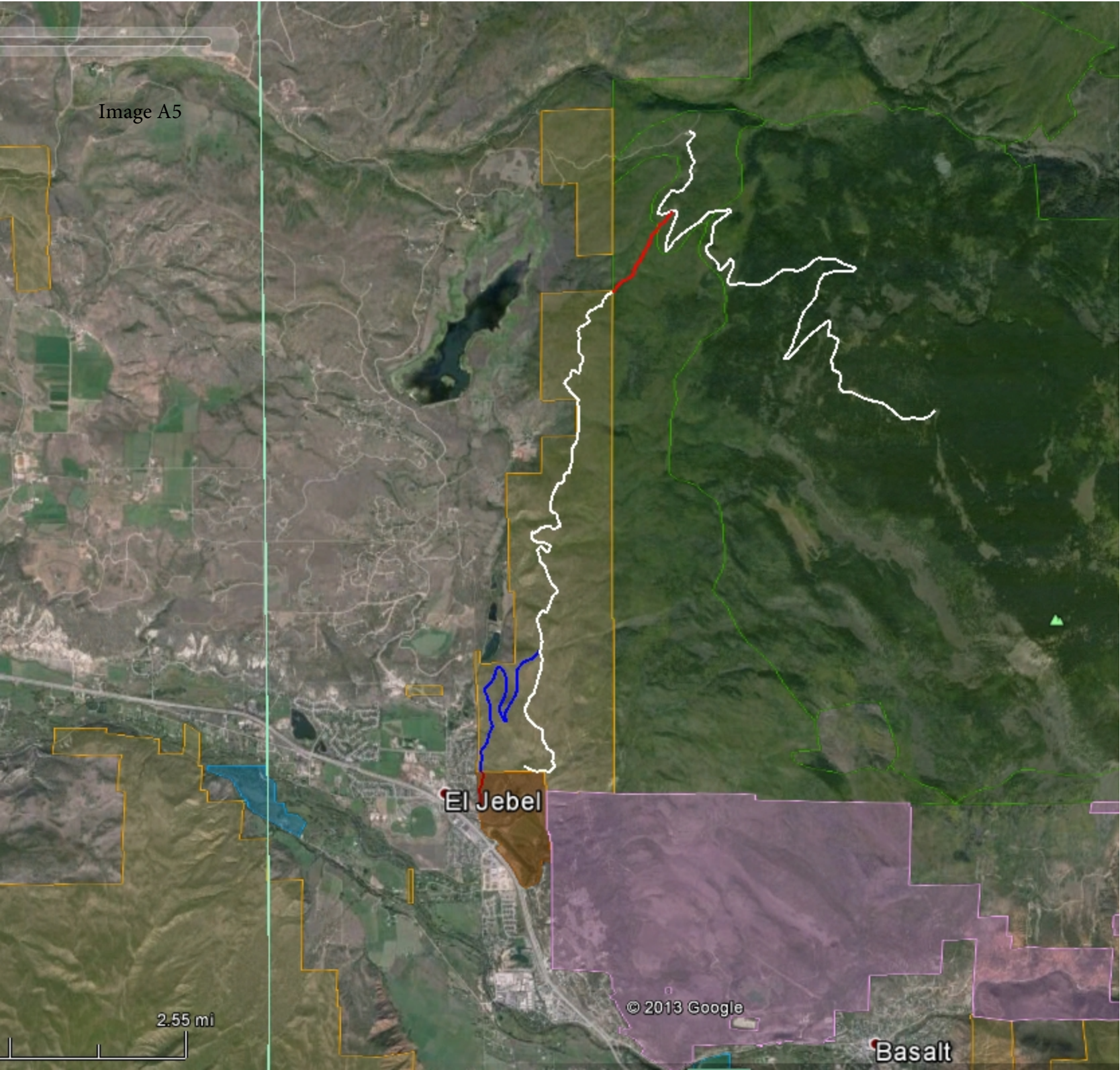


Image A5

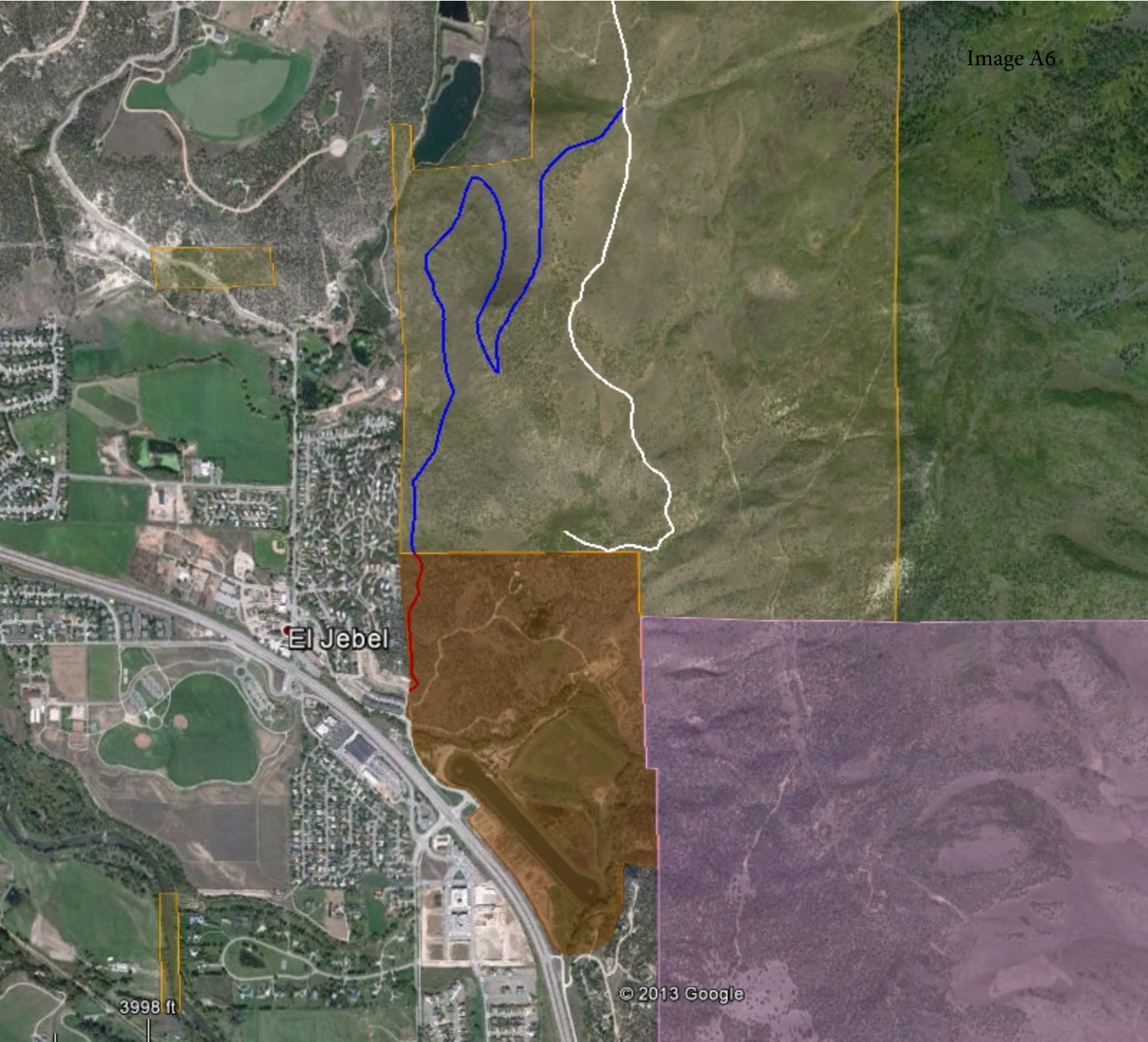


El Jebel

© 2013 Google

Basalt

2.55 mi



El Jebel

3998 ft

El Jebel

1466 ft

