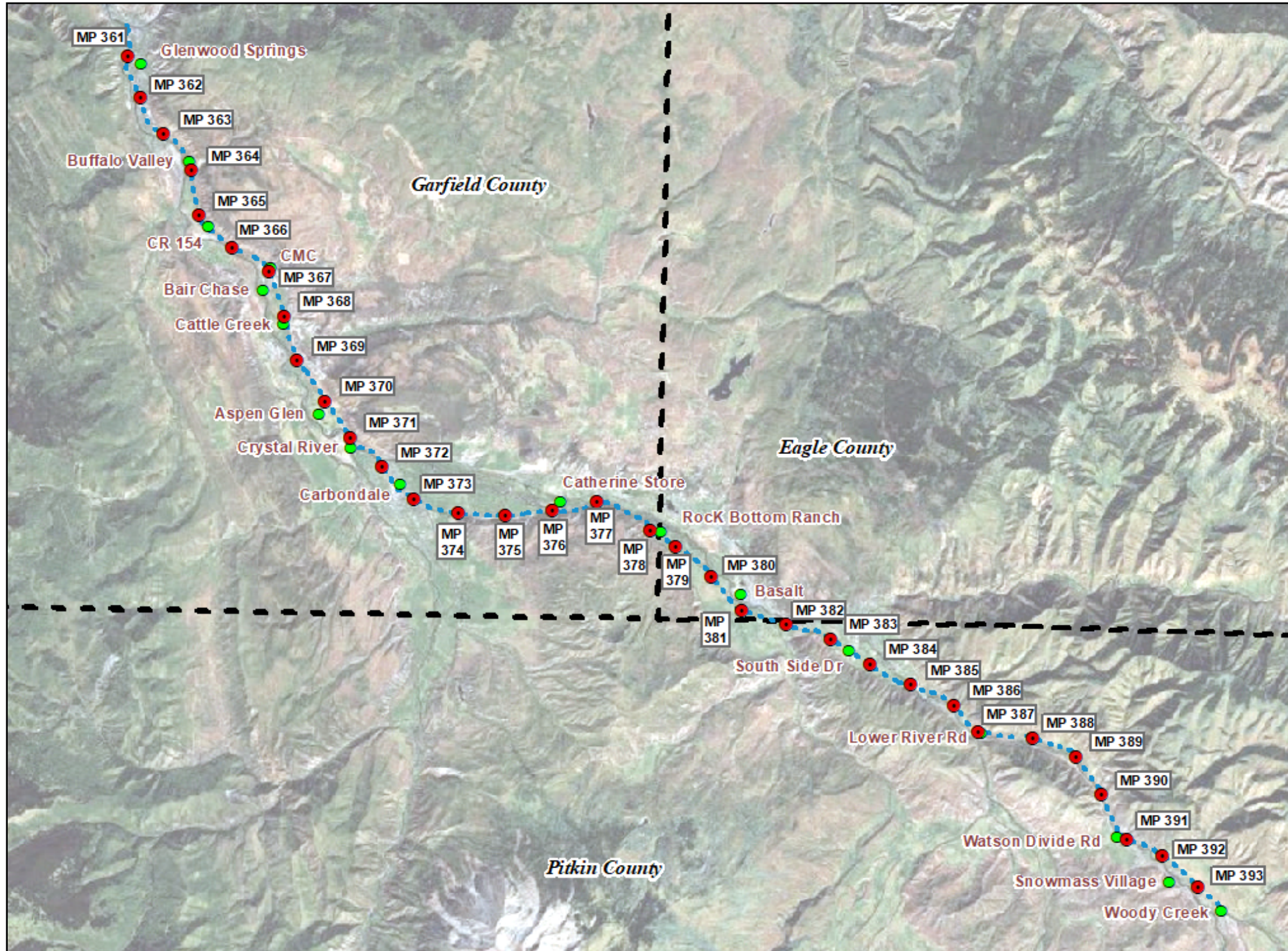




RFTA Railroad Right-of-Way Ownership Atlas

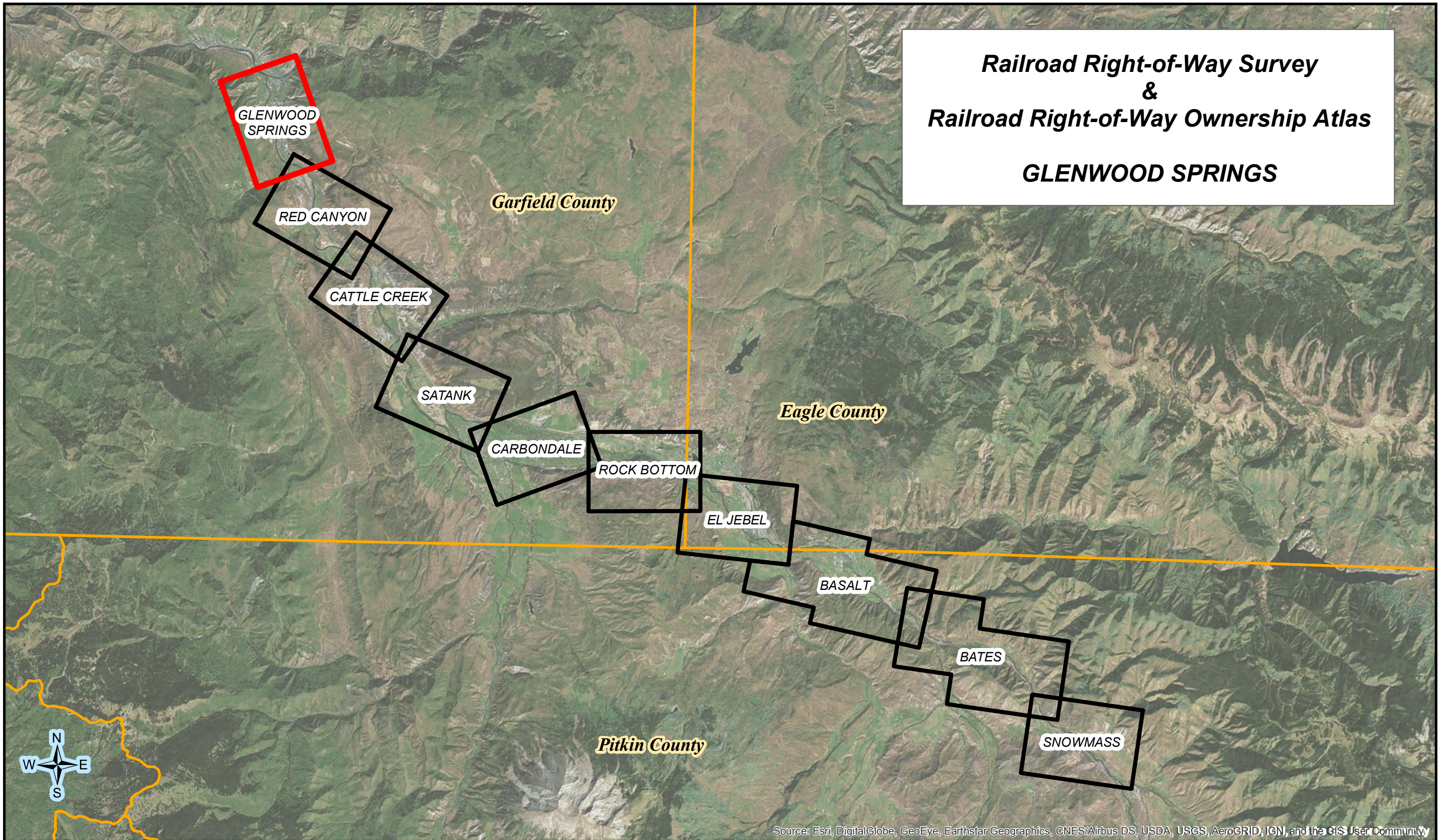
Issue Date: January 10, 2020



- Prepared using ownership research data from the Railroad Right-of-Way Survey prepared by Farnsworth Group, Inc. in 2007/2008. Recorded at Reception No.'s 784 through 789 in the Records of Garfield County, Colorado, in Book 1 at Pages 704 through 715 in the Records of Eagle County, Colorado, and at Reception No.'s 555084 through 555087 in the Records of Pitkin County, Colorado, plus additional research data obtained since the Survey.
- Specific ownership information is from historic railroad and public records research performed by Farnsworth Group, Inc. and did not include title commitments or any other title company research.
- Municipal boundaries from Garfield & Pitkin Counties.
- Initial publication date of this Atlas: December 19, 2012, revised January 2020.
- The RFTA RR ROW shown on these atlas sheets has been updated since the 2008 survey to reflect the current ROW boundaries as of August 31, 2019.



**Railroad Right-of-Way Survey
&
Railroad Right-of-Way Ownership Atlas
GLENWOOD SPRINGS**



Page Intentionally Blank

SHEET INDEX

AND SUPPLEMENTAL PUBLIC LAND SURVEY SYSTEM CONTROL SHEET

NOTE:
SEE 1"=60' DETAIL SHEETS FOR MORE
COMPREHENSIVE SURVEY DETAIL
SEE SHEETS 3 THROUGH 10

ISSUE:	1	8/03/07	MCG	ORIGINAL ISSUE
	2	12/02/08	AFP	REVISION FOR CORRECTION DEED

Client:
**Roaring Fork
Transportation Authority**
0766 Industry Way
Carbondale, CO 81623

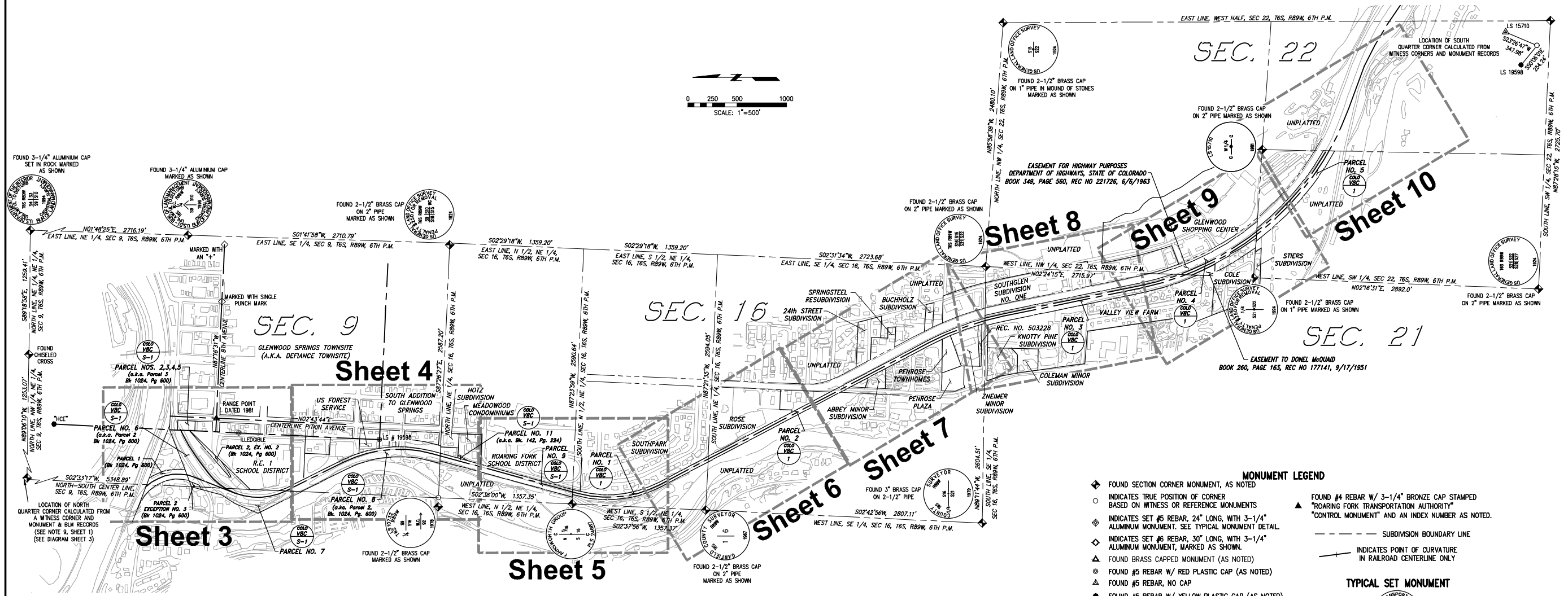
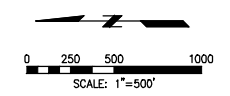
Date: 8-03-07
Drawn: MCG
Checked: MCG
Book No.: 2195

Farnsworth
GROUP
ENGINEERS
ARCHITECTS
SURVEYORS
SCIENTISTS
8055 EAST TULSA AVENUE, SUITE 800, DENVER, COLORADO 80237
(303) 676-8837 / (303) 676-0470 Fax www.fg.com

Railroad ROW Survey - Glenwood Springs Segment
Portion of Former Denver & Rio Grande Railroad
Aspen Branch Right-Of-Way
Sections 9, 16, 21, 22
Township 6 South, Range 89 West, 6th P.M.
Garfield County, State of Colorado

Project No.:
305007.7

SHEET 2 OF 10
OVERALL SHEET 2 OF 126



- MONUMENT LEGEND**
- ◆ FOUND SECTION CORNER MONUMENT, AS NOTED
 - INDICATES TRUE POSITION OF CORNER BASED ON WITNESS OR REFERENCE MONUMENTS
 - ◇ INDICATES SET #5 REBAR, 24" LONG, WITH 3-1/4" ALUMINUM MONUMENT. SEE TYPICAL MONUMENT DETAIL
 - ◇ INDICATES SET #6 REBAR, 30" LONG, WITH 3-1/4" ALUMINUM MONUMENT, MARKED AS SHOWN.
 - ▲ FOUND BRASS CAPPED MONUMENT (AS NOTED)
 - FOUND #5 REBAR W/ RED PLASTIC CAP (AS NOTED)
 - ▲ FOUND #5 REBAR, NO CAP
 - FOUND #5 REBAR W/ YELLOW PLASTIC CAP (AS NOTED)
 - FOUND #5 REBAR W/ ORANGE PLASTIC CAP (AS NOTED)
 - SET WASHER & PK NAIL STAMPED "LS 16401"
 - ▲ FOUND #5 REBAR W/ 1-1/4" ALUMINUM CAP (AS NOTED)
 - ◆ FOUND 3-1/4" ALUMINUM CAP IN RANGE BOX (MARKED AS NOTED)
 - ◇ NOT SET DUE TO ADVERSE FIELD CONDITIONS
- TYPICAL SET MONUMENT**
-
- MONUMENTS SET AS WITNESS CORNERS WILL BE MARKED WITH A "WC" AND THE DISTANCE AND DIRECTION TO THE ACTUAL CORNER

MILEPOSTS & STATIONING LEGEND (ADDED IN 2019)

STATION M.P.	STATION M.P.	= RFTA 10TH OF A MILE MILEPOST
STATION M.P.	STATION M.P.	= D&RGW RAILROAD 10TH OF A MILE MILEPOST
STATION M.P.		EPS = ENGINEER PROFILE STATION (D&RGW)

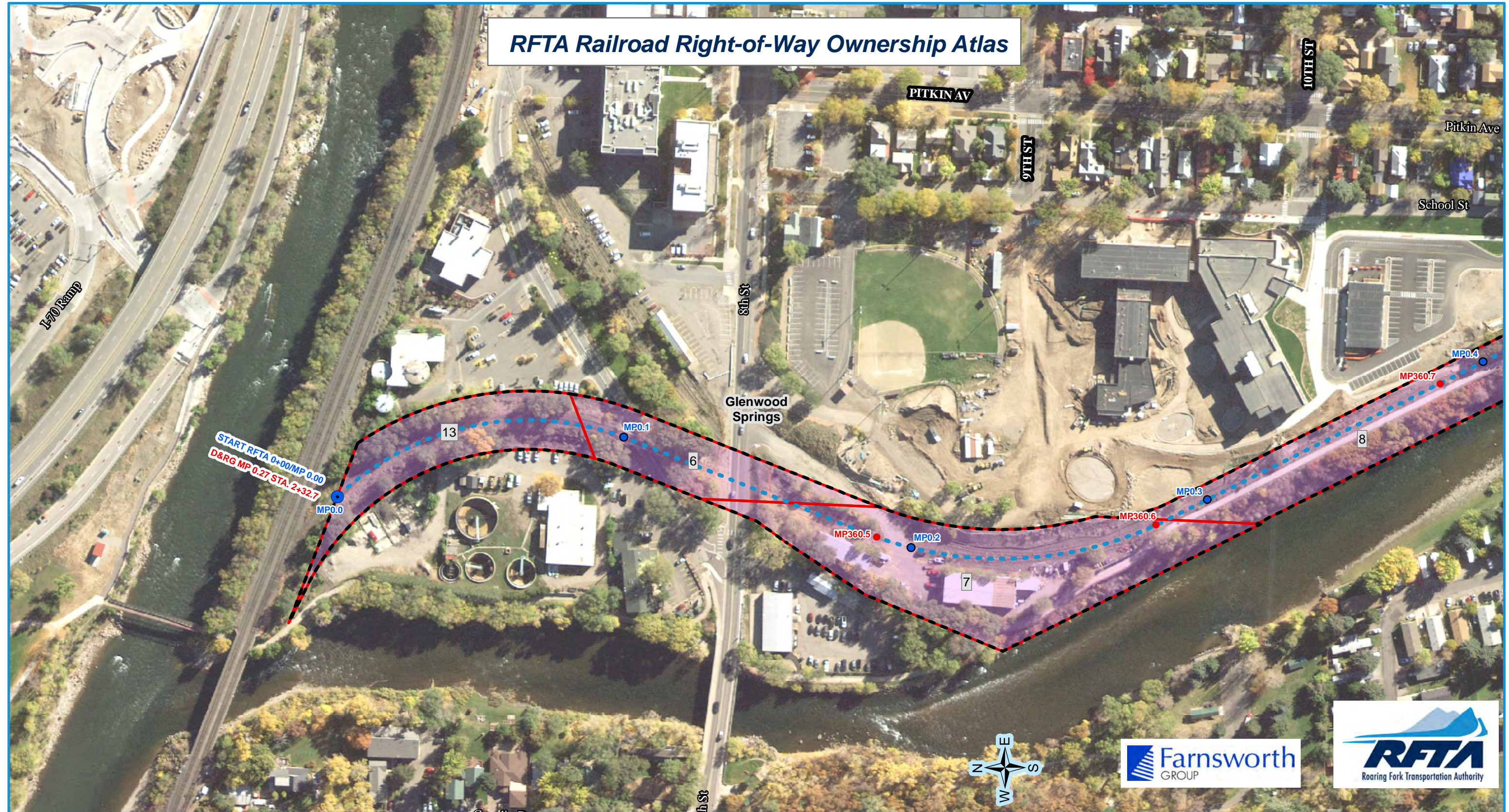
RFTA MILEPOSTS AND STATIONING

D&RGW MILEPOSTS AND STATIONING BASED ON 1901 RAILROAD MAPS



Xref File: \\yfh-sous-1\yfh\pdx\advertising\11/17/2019 9:10 AM |
 c:\pdx\1\p\305007\305007.dwg - RFTA Contract (3-03) - Rio Grande Trail ROW from Development (Comp)\Mile Posts\VP - 3007 - Glenwood Springs | 11/17/2019 9:10 AM |

RFTA Railroad Right-of-Way Ownership Atlas



- RFTA Mileposts**
- Mile
 - Tenth
- D&RG Mileposts**
- Mile
 - Tenth
 - Conservation Covenant Area Begin/End
 - Conservation Covenant Area Hatch

- RFTA ROW Centerline
- RFTA ROW Line
- Parcel Division Lines
- Municipal Limits

- Parcel - Type**
- | | | | |
|--------------|-----------|------------------------|------------------------|
| 1 - Grant | 2 - Fee | 3 - Adverse Possession | 4 - Adverse Possession |
| 5 - Easement | 6 - Other | | |

- 1 = Gov't Congressional Grant = Railroad Land Grant (Limited Fee or Fee Simple-Determinant)
- 2 = Fee/Deeded
- 4 = Prescriptive Right/Adverse Possession
- 5 = Easement
- 6 = Other (License, Contract, Permit, Ordinance, Court Decree, Charter, State PUC Decision [Administrative Law Decision] etc.)

Parcel Number Label: 68

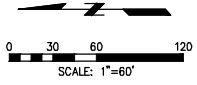
Aerial background: Hexagon Valtus Aerial Imagery - 1 foot - Sept. 2017



Rev. 1/8/2020

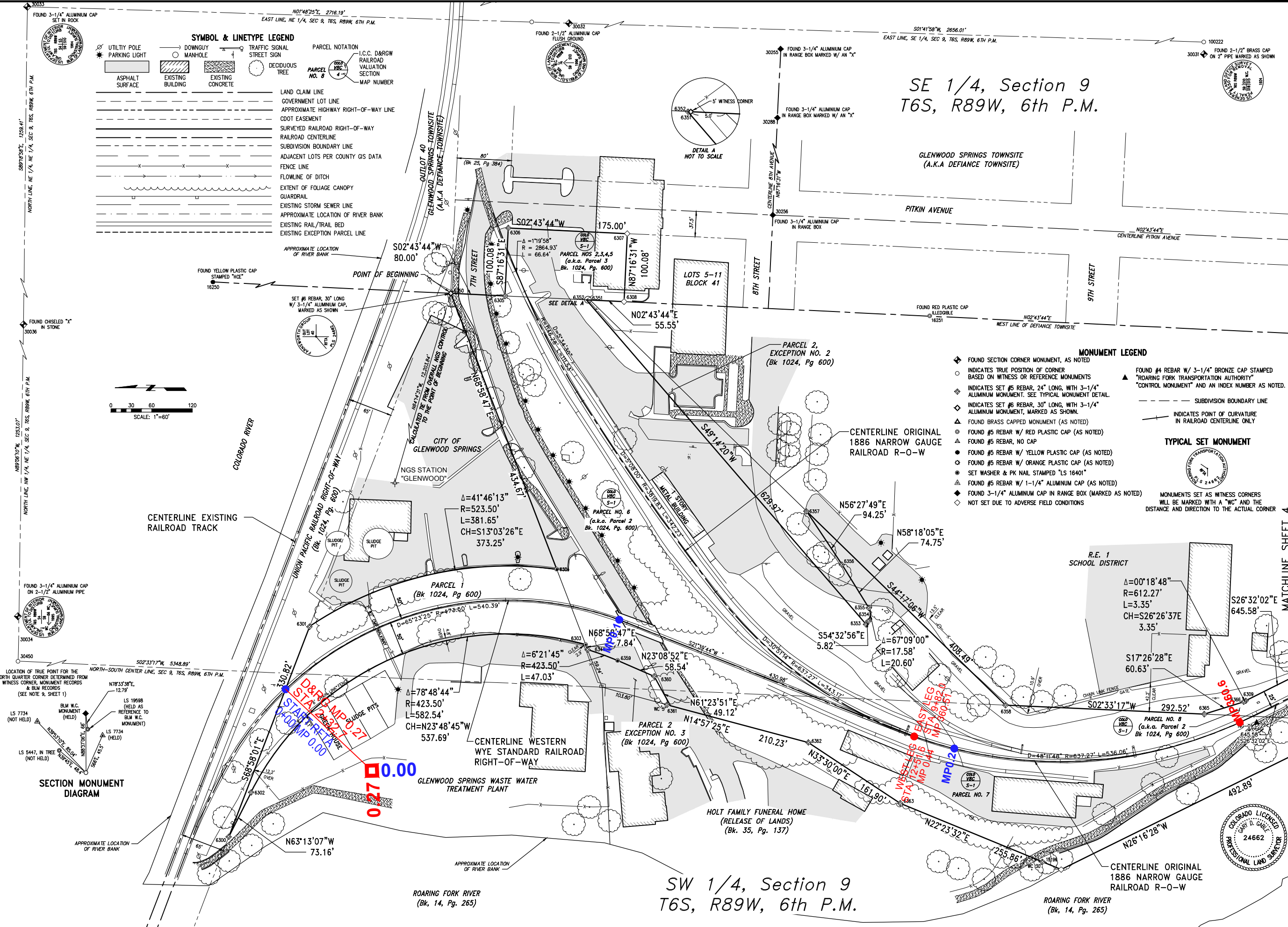
SYMBOL & LINETYPE LEGEND

	UTILITY POLE		PARCEL NOTATION
	PARKING LIGHT		I.C.C. D&RW
	DOWNGUY MANHOLE		RAILROAD VALUATION SECTION
	TRAFFIC SIGNAL		MAP NUMBER
	ASPHALT SURFACE		LAND CLAIM LINE
	EXISTING BUILDING		GOVERNMENT LOT LINE
	EXISTING CONCRETE		APPROXIMATE HIGHWAY RIGHT-OF-WAY LINE
	DECIDUOUS TREE		CDT EASEMENT
	SURVEYED RAILROAD RIGHT-OF-WAY		RAILROAD CENTERLINE
	SUBDIVISION BOUNDARY LINE		ADJACENT LOTS PER COUNTY GIS DATA
	FENCE LINE		FLOWLINE OF DITCH
	EXTENT OF FOLIAGE CANOPY		GUARDRAIL
	EXISTING STORM SEWER LINE		APPROXIMATE LOCATION OF RIVER BANK
	EXISTING RAIL/TRAIL BED		EXISTING EXCEPTION PARCEL LINE



SE 1/4, Section 9
T6S, R89W, 6th P.M.

- MONUMENT LEGEND**
- ◆ FOUND SECTION CORNER MONUMENT, AS NOTED
 - INDICATES TRUE POSITION OF CORNER BASED ON WITNESS OR REFERENCE MONUMENTS
 - ◇ INDICATES SET #5 REBAR, 24" LONG, WITH 3-1/4" ALUMINUM MONUMENT. SEE TYPICAL MONUMENT DETAIL.
 - ◇ INDICATES SET #6 REBAR, 30" LONG, WITH 3-1/4" ALUMINUM MONUMENT, MARKED AS SHOWN.
 - ▲ FOUND BRASS CAPPED MONUMENT (AS NOTED)
 - FOUND #5 REBAR W/ RED PLASTIC CAP (AS NOTED)
 - FOUND #5 REBAR, NO CAP
 - FOUND #5 REBAR W/ YELLOW PLASTIC CAP (AS NOTED)
 - FOUND #5 REBAR W/ ORANGE PLASTIC CAP (AS NOTED)
 - SET WASHER & PK NAIL STAMPED "LS 16401"
 - ▲ FOUND #5 REBAR W/ 1-1/4" ALUMINUM CAP (AS NOTED)
 - ◆ FOUND 3-1/4" ALUMINUM CAP IN RANGE BOX (MARKED AS NOTED)
 - ◇ NOT SET DUE TO ADVERSE FIELD CONDITIONS
- TYPICAL SET MONUMENT**
-
- MONUMENTS SET AS WITNESS CORNERS WILL BE MARKED WITH A "WC" AND THE DISTANCE AND DIRECTION TO THE ACTUAL CORNER



SW 1/4, Section 9
T6S, R89W, 6th P.M.

Roaring Fork
Transportation Authority
0766 Industry Way
Carbondale, CO 81623

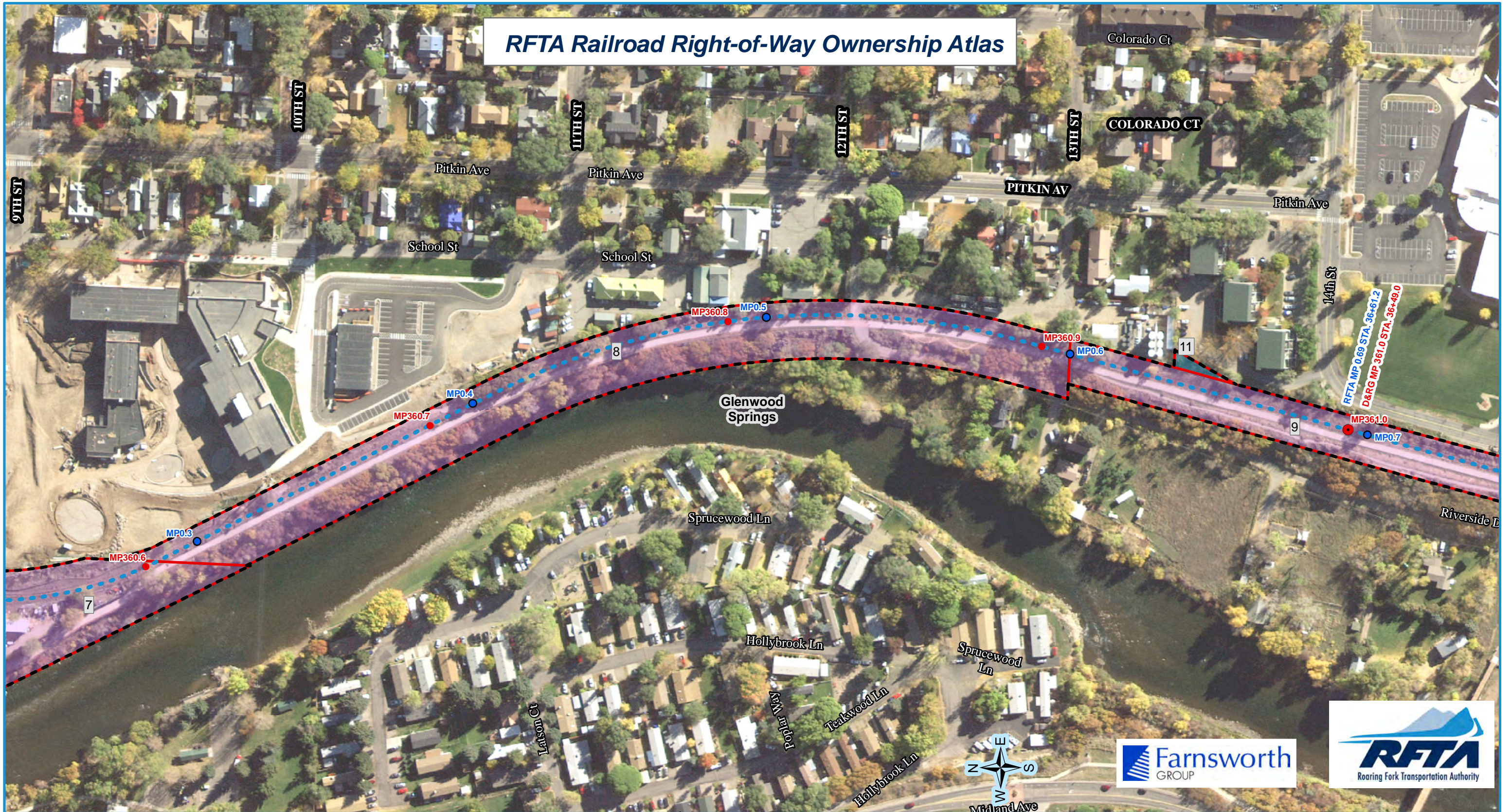
Date: 8-03-07
Drawn: MCG
Checked: MCG
Book No.: 2195

Farnsworth GROUP
ENGINEER ARCHITECT SURVEYOR SCIENTIST
805 EAST TULSA AVENUE, SUITE 800, DENVER, COLORADO 80202
(303) 692-8887 / (303) 692-6070 Fax www.fg.com

Railroad ROW Survey - Glenwood Springs Segment
Portion of Former Denver & Rio Grande Railroad
Aspen Branch Right-Of-Way
Township 6 South, Range 89 West, 6th P.M.
Garfield County, State of Colorado

Project No.: 305007.7
SHEET 3 OF 10
OVERALL SHEET 3 OF 126

RFTA Railroad Right-of-Way Ownership Atlas



RFTA Mileposts
 ● Mile
 ● Tenth

D&RG Mileposts
 ● Mile
 ● Tenth
 ● Conservation Covenant Area Begin/End
 Conservation Covenant Area Hatch

● RFTA ROW Centerline
 - - RFTA ROW Line
 Parcel Division Lines
 Municipal Limits

Parcel - Type

4 - Adverse Possession	5 - Easement
1 - Grant	6 - Other
2 - Fee	

1 = Gov't Congressional Grant = Railroad Land Grant (Limited Fee or Fee Simple-Determinant)
 2 = Fee/Deeded
 4 = Prescriptive Right/Adverse Possession
 5 = Easement
 6 = Other (License, Contract, Permit, Ordinance, Court Decree, Charter, State PUC Decision [Administrative Law Decision] etc.)

Parcel Number Label: 68

Aerial background: Hexagon Valtus Aerial Imagery - 1 foot - Sept. 2017

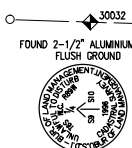
1 inch = 160 feet

0 50 100 Feet

0 40 80 120 160 Feet



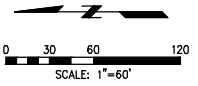
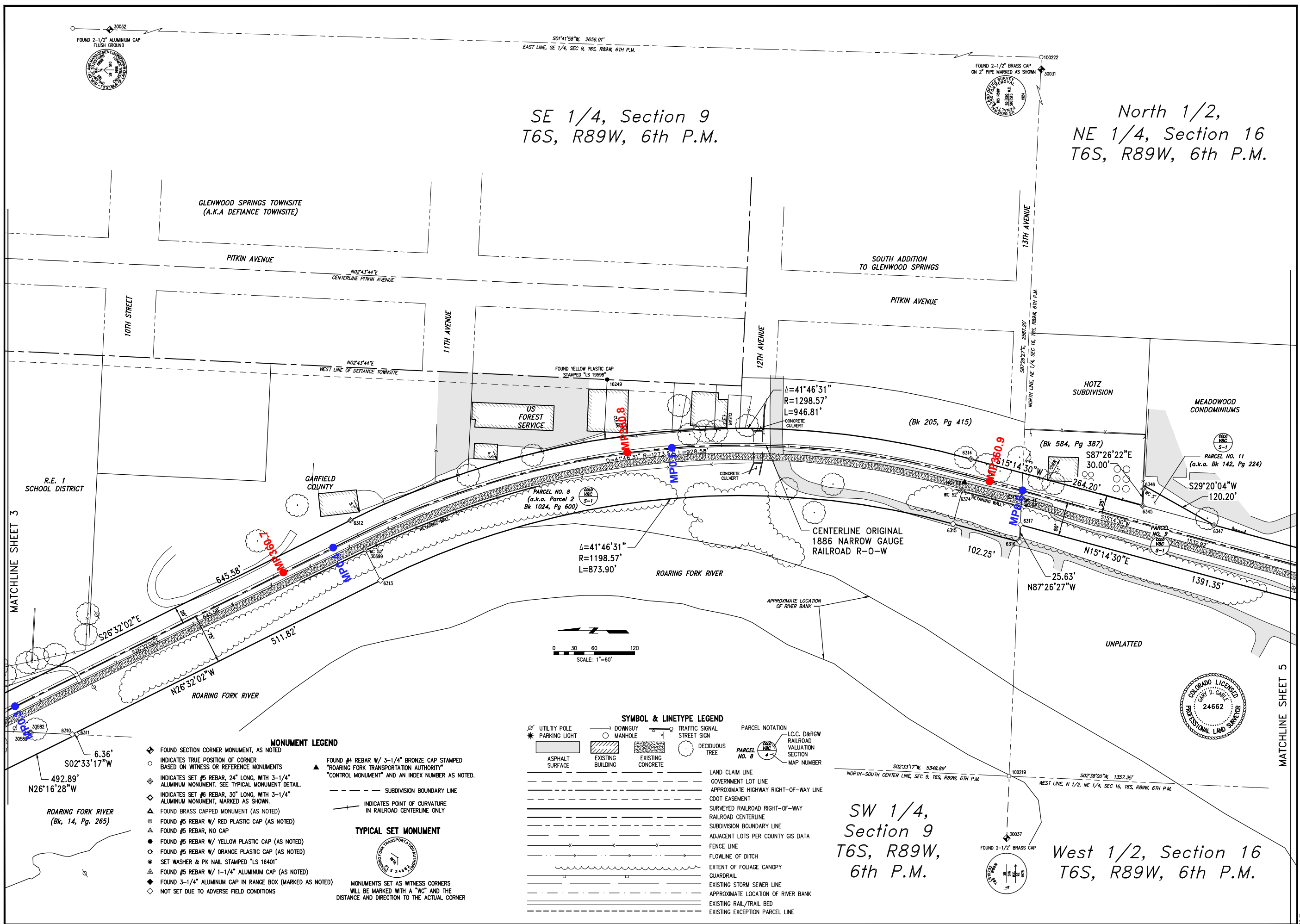
Rev. 1/8/2020



501°41'58"W, 2656.01'
EAST LINE, SE 1/4, SEC 9, T6S, R89W, 6TH P.M.

SE 1/4, Section 9
T6S, R89W, 6th P.M.

North 1/2,
NE 1/4, Section 16
T6S, R89W, 6th P.M.



SYMBOL & LINETYPE LEGEND

	UTILITY POLE		DOWNGUY MANHOLE		TRAFFIC SIGNAL STREET SIGN
	ASPHALT SURFACE		EXISTING BUILDING		DECIDUOUS TREE
	EXISTING CONCRETE		LAND CLAIM LINE		GOVERNMENT LOT LINE
	APPROXIMATE HIGHWAY RIGHT-OF-WAY LINE		CO2 EASEMENT		SURVEYED RAILROAD RIGHT-OF-WAY
	RAILROAD CENTERLINE		SUBDIVISION BOUNDARY LINE		ADJACENT LOTS PER COUNTY GIS DATA
	FENCE LINE		FLOWLINE OF DITCH		EXTENT OF FOLIAGE CANOPY
	QUARDRAIL		EXISTING STORM SEWER LINE		APPROXIMATE LOCATION OF RIVER BANK
	EXISTING RAIL/TRAIL BED		EXISTING EXCEPTION PARCEL LINE		

- MONUMENT LEGEND**
- ◆ FOUND SECTION CORNER MONUMENT, AS NOTED
 - INDICATES TRUE POSITION OF CORNER BASED ON WITNESS OR REFERENCE MONUMENTS
 - ◆ INDICATES SET #5 REBAR, 24" LONG, WITH 3-1/4" ALUMINUM MONUMENT. SEE TYPICAL MONUMENT DETAIL.
 - ◆ INDICATES SET #6 REBAR, 30" LONG, WITH 3-1/4" ALUMINUM MONUMENT, MARKED AS SHOWN.
 - ▲ FOUND BRASS CAPPED MONUMENT (AS NOTED)
 - FOUND #5 REBAR W/ RED PLASTIC CAP (AS NOTED)
 - FOUND #5 REBAR, NO CAP
 - FOUND #5 REBAR W/ YELLOW PLASTIC CAP (AS NOTED)
 - FOUND #5 REBAR W/ ORANGE PLASTIC CAP (AS NOTED)
 - SET WASHER & PK NAIL STAMPED "LS 16401"
 - FOUND #5 REBAR W/ 1-1/4" ALUMINUM CAP (AS NOTED)
 - ◆ FOUND 3-1/4" ALUMINUM CAP IN RANGE BOX (MARKED AS NOTED)
 - ◇ NOT SET DUE TO ADVERSE FIELD CONDITIONS
- TYPICAL SET MONUMENT**
-
- MONUMENTS SET AS WITNESS CORNERS WILL BE MARKED WITH A "WC" AND THE DISTANCE AND DIRECTION TO THE ACTUAL CORNER



SW 1/4,
Section 9
T6S, R89W,
6th P.M.

West 1/2, Section 16
T6S, R89W, 6th P.M.

MATCHLINE SHEET 3

MATCHLINE SHEET 5

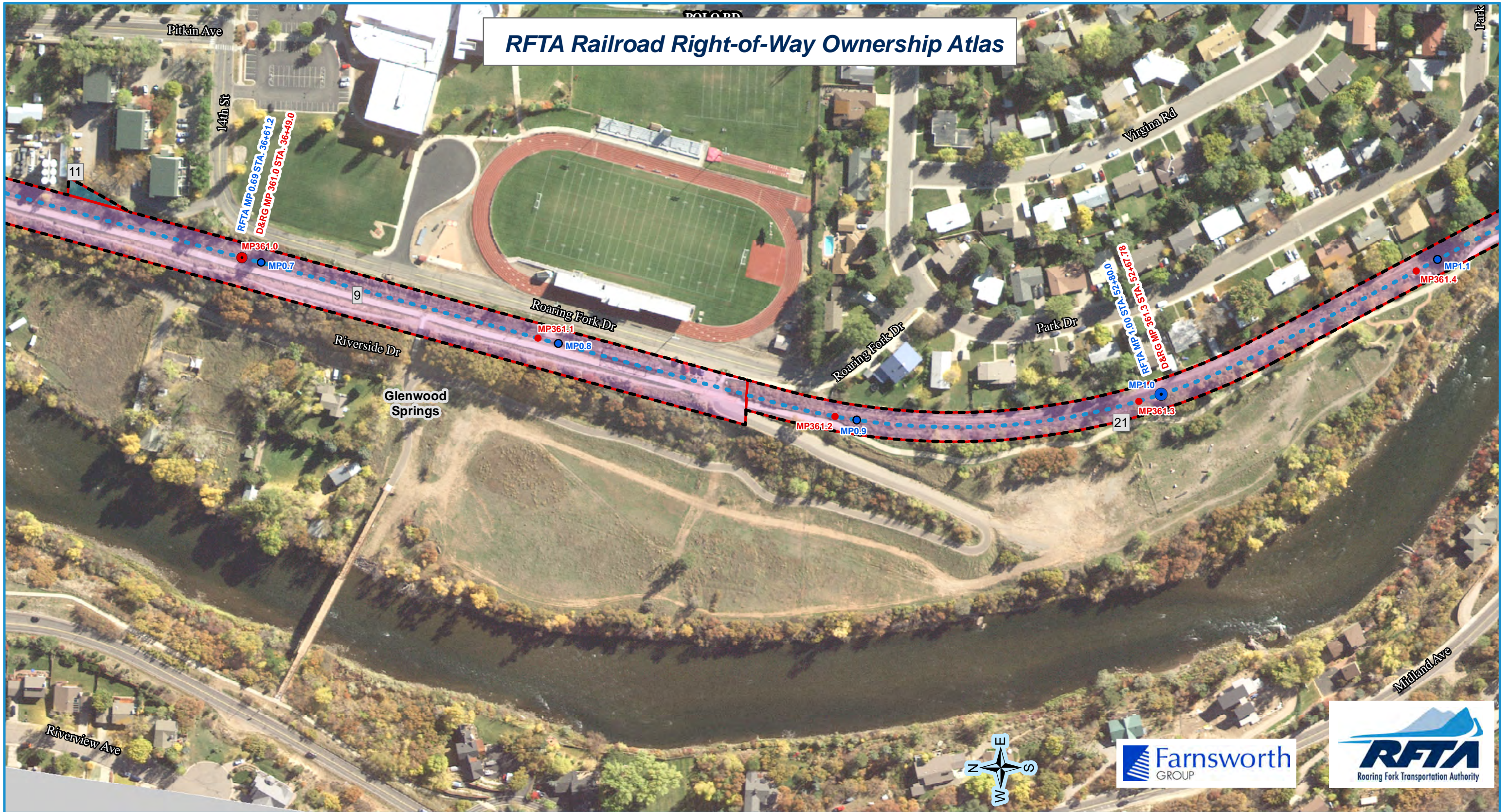
Farnsworth GROUP
ENGINEER, ARCHITECT, SURVEYOR, SCIENTIST
8055 EAST 114TH AVENUE, SUITE 800, DENVER, COLORADO 80237
(303) 692-8887 / (303) 692-0470 Fax www.fgwg.com

Roaring Fork Transportation Authority
0786 Industry Way
Carbondale, CO 81623

Date: 8-03-07
Drawn: MCG
Checked: MCG
Book No.: 2195

Project No.: 305007.7
SHEET 4 OF 10
OVERALL SHEET 4 OF 126

RFTA Railroad Right-of-Way Ownership Atlas



- RFTA Mileposts**
- Mile
 - Tenth
- D&RG Mileposts**
- Mile
 - Tenth
 - Conservation Covenant Area Begin/End
 - ▭ Conservation Covenant Area Hatch

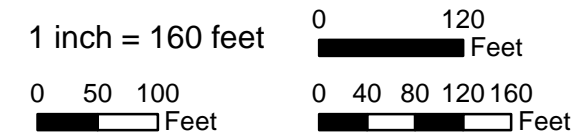
- RFTA ROW Centerline
- RFTA ROW Line
- ▭ Parcel Division Lines
- ▭ Municipal Limits

- Parcel - Type**
- 1 - Grant
 - 2 - Fee
 - 3 - Adverse Possession
 - 4 - Adverse Possession
 - 5 - Easement
 - 6 - Other

- 1 = Gov't Congressional Grant = Railroad Land Grant (Limited Fee or Fee Simple-Determinant)
- 2 = Fee/Deeded
- 4 = Prescriptive Right/Adverse Possession
- 5 = Easement
- 6 = Other (License, Contract, Permit, Ordinance, Court Decree, Charter, State PUC Decision [Administrative Law Decision] etc.)

Parcel Number Label: 68

Aerial background: Hexagon Valtus Aerial Imagery - 1 foot - Sept. 2017



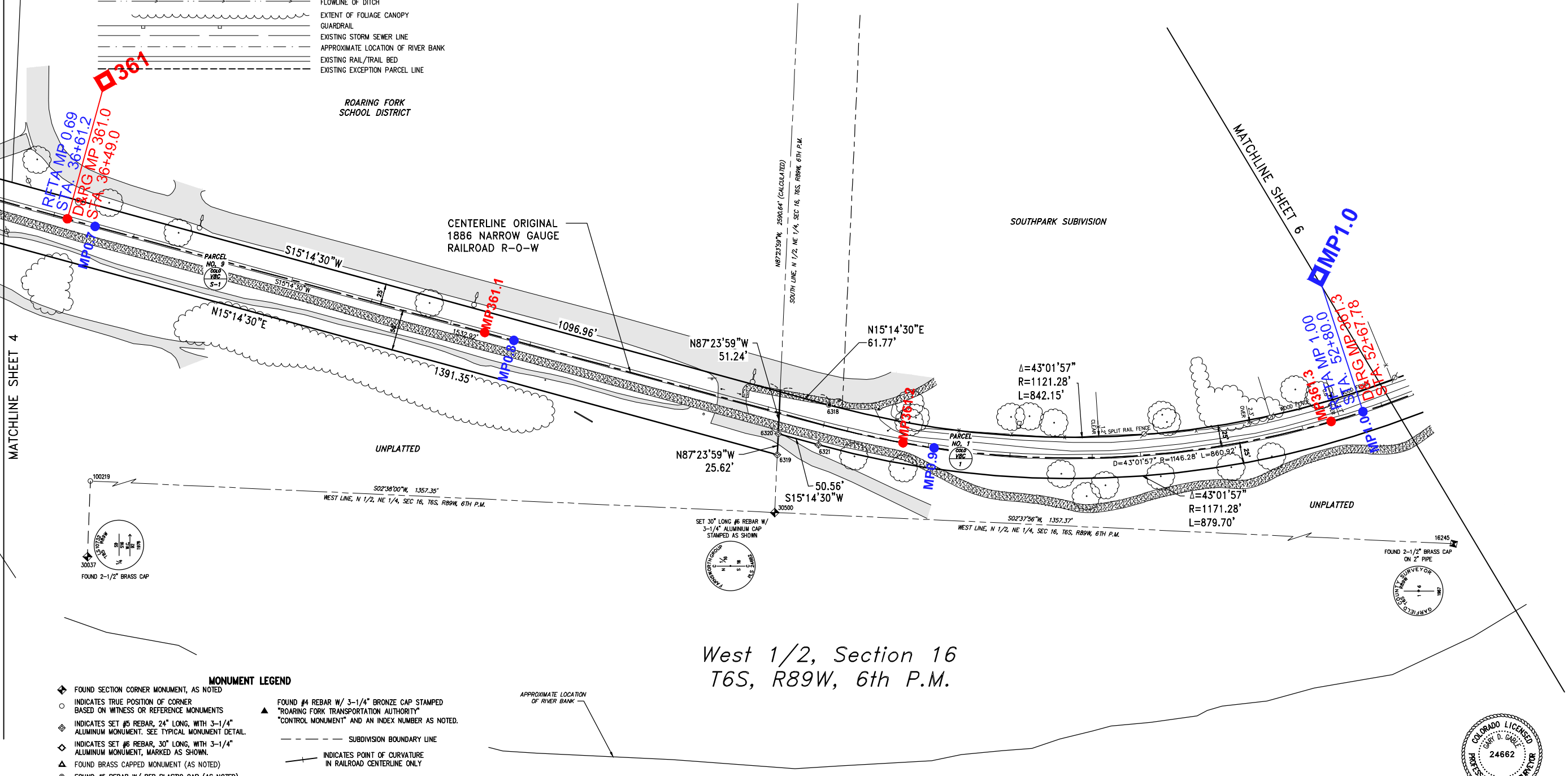
Rev. 1/8/2020

SYMBOL & LINETYPE LEGEND

	UTILITY POLE		DOWNGUY		TRAFFIC SIGNAL		PARCEL NOTATION
	PARKING LIGHT		MANHOLE		STREET SIGN		L.C.C. D&RG
	ASPHALT SURFACE		EXISTING BUILDING		DECIDUOUS TREE		RAILROAD VALUATION SECTION
	EXISTING CONCRETE		LAND CLAIM LINE		GOVERNMENT LOT LINE		MAP NUMBER
	APPROXIMATE HIGHWAY RIGHT-OF-WAY LINE		CDOT EASEMENT		SURVEYED RAILROAD RIGHT-OF-WAY		
	RAILROAD CENTERLINE		SUBDIVISION BOUNDARY LINE		ADJACENT LOTS PER COUNTY GIS DATA		
	FENCE LINE		FLOWLINE OF DITCH		EXTENT OF FOLIAGE CANOPY		
	GUARDRAIL		EXISTING STORM SEWER LINE		APPROXIMATE LOCATION OF RIVER BANK		
	EXISTING RAIL/TRAIL BED		EXISTING EXCEPTION PARCEL LINE				

North 1/2,
NE 1/4, Section 16
T6S, R89W, 6th P.M.

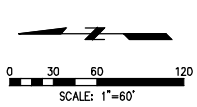
South 1/2,
NE 1/4, Section 16
T6S, R89W, 6th P.M.



West 1/2, Section 16
T6S, R89W, 6th P.M.

MONUMENT LEGEND

	FOUND SECTION CORNER MONUMENT, AS NOTED		FOUND #4 REBAR W/ 3-1/4" BRONZE CAP STAMPED "ROARING FORK TRANSPORTATION AUTHORITY" "CONTROL MONUMENT" AND AN INDEX NUMBER AS NOTED.
	INDICATES TRUE POSITION OF CORNER BASED ON WITNESS OR REFERENCE MONUMENTS		SUBDIVISION BOUNDARY LINE
	INDICATES SET #5 REBAR, 24" LONG, WITH 3-1/4" ALUMINUM MONUMENT. SEE TYPICAL MONUMENT DETAIL.		INDICATES POINT OF CURVATURE IN RAILROAD CENTERLINE ONLY
	INDICATES SET #6 REBAR, 30" LONG, WITH 3-1/4" ALUMINUM MONUMENT, MARKED AS SHOWN.		TYPICAL SET MONUMENT
	FOUND BRASS CAPPED MONUMENT (AS NOTED)		MONUMENTS SET AS WITNESS CORNERS WILL BE MARKED WITH A "WC" AND THE DISTANCE AND DIRECTION TO THE ACTUAL CORNER
	FOUND #5 REBAR W/ RED PLASTIC CAP (AS NOTED)		
	FOUND #5 REBAR, NO CAP		
	FOUND #5 REBAR W/ YELLOW PLASTIC CAP (AS NOTED)		
	FOUND #5 REBAR W/ ORANGE PLASTIC CAP (AS NOTED)		
	SET WASHER & PK NAIL STAMPED "LS 16401"		
	FOUND #5 REBAR W/ 1-1/4" ALUMINUM CAP (AS NOTED)		
	FOUND 3-1/4" ALUMINUM CAP IN RANGE BOX (MARKED AS NOTED)		
	NOT SET DUE TO ADVERSE FIELD CONDITIONS		



ISSUE:	1	8/03/07	MCG	ORIGINAL ISSUE
	2	12/02/08	AFP	REVISION FOR CORRECTION DEED

CLIENT:
Roaring Fork
Transportation Authority
0786 Industry Way
Carbondale, CO 81623

DATE: 8-03-07
DRAWN: MCG
CHECKED: MCG
BOOK NO.: 2195

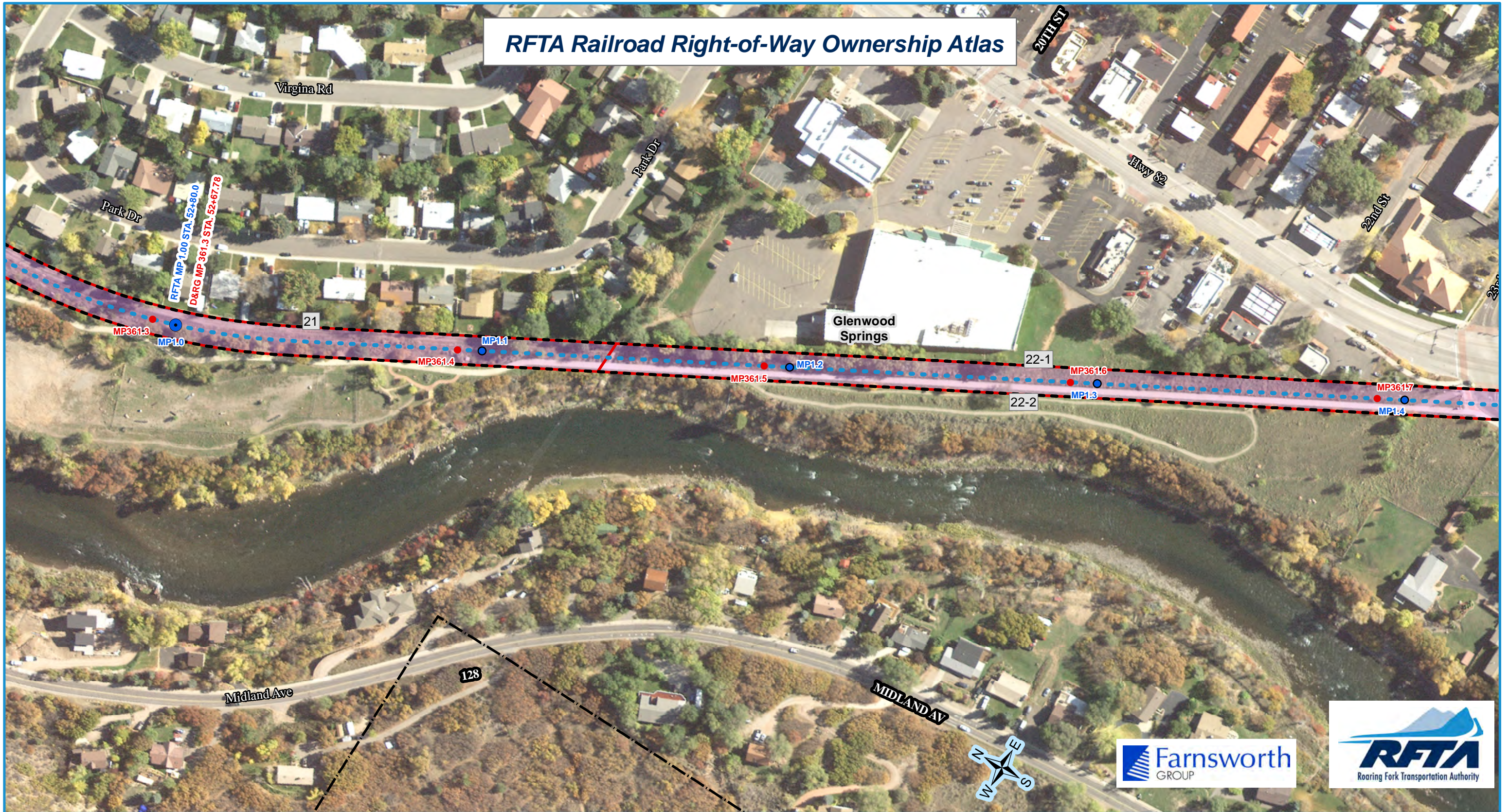
Farnsworth GROUP
ENGINEER, ARCHITECT, SURVEYOR, SCIENTIST
8055 EAST 14TH AVENUE, SUITE 800, DENVER, COLORADO 80237
(303) 692-8837 / (303) 692-0470 Fax www.fw.com

Railroad ROW Survey - Glenwood Springs Segment
Portion of Former Denver & Rio Grande Railroad
Aspen Branch Right-Of-Way
Sections 9, 16, 21, 22
Township 6 South, Range 89 West, 6th P.M.
Garfield County, State of Colorado

Project No.: 305007.7
SHEET 5 OF 10
OVERALL SHEET 5 OF 126

Xref Files: \\fhs-nas1\1_Veripoint\advertising\1_Capital\1_P\2013\2013026\00 - RFA Contract\13-003 - RfO_Grade_Trail ROW From Development\Copy\Map_V-3007-Demo.dwg | 11/17/2016 9:16 AM |

RFTA Railroad Right-of-Way Ownership Atlas



RFTA Mileposts
 ● Mile
 ● Tenth

D&RG Mileposts
 ● Mile
 ● Tenth
 ● Conservation Covenant Area Begin/End

▨ Conservation Covenant Area Hatch

● RFTA ROW Centerline
 - - - RFTA ROW Line
 ▭ Parcel Division Lines
 | | Municipal Limits

Parcel - Type

1 - Grant	2 - Fee	3 - Adverse Possession	4 - Adverse Possession
5 - Easement	6 - Other		

1 = Gov't Congressional Grant = Railroad Land Grant (Limited Fee or Fee Simple-Determinant)
 2 = Fee/Deeded
 4 = Prescriptive Right/Adverse Possession
 5 = Easement
 6 = Other (License, Contract, Permit, Ordinance, Court Decree, Charter, State PUC Decision [Administrative Law Decision] etc.)

Parcel Number Label: 68

1 inch = 160 feet

0 50 100 Feet

0 40 80 120 160 Feet

Rev. 1/8/2020

Aerial background: Hexagon Valtus Aerial Imagery - 1 foot - Sept. 2017

SYMBOL & LINETYPE LEGEND	
	UTILITY POLE
	PARKING LIGHT
	ASPHALT SURFACE
	DOWNGUY
	EXISTING BUILDING
	EXISTING CONCRETE
	TRAFFIC SIGNAL
	STREET SIGN
	DECIDUOUS TREE
	PARCEL NOTATION
	I.C.C. D&RW
	RAILROAD VALUATION
	SECTION
	MAP NUMBER
	LAND CLAIM LINE
	GOVERNMENT LOT LINE
	APPROXIMATE HIGHWAY RIGHT-OF-WAY LINE
	CDOT EASEMENT
	SURVEYED RAILROAD RIGHT-OF-WAY
	RAILROAD CENTERLINE
	SUBDIVISION BOUNDARY LINE
	ADJACENT LOTS PER COUNTY GIS DATA
	FENCE LINE
	FLOWLINE OF DITCH
	EXTENT OF FOLIAGE CANOPY
	GUARDRAIL
	EXISTING STORM SEWER LINE
	APPROXIMATE LOCATION OF RIVER BANK
	EXISTING RAIL/TRAIL BED
	EXISTING EXCEPTION PARCEL LINE

NE 1/4, Section 16
T6S, R89W, 6th P.M.

SOUTHPARK SUBDIVISION

ROSE SUBDIVISION

CENTERLINE ORIGINAL
1886 NARROW GAUGE
RAILROAD R-O-W

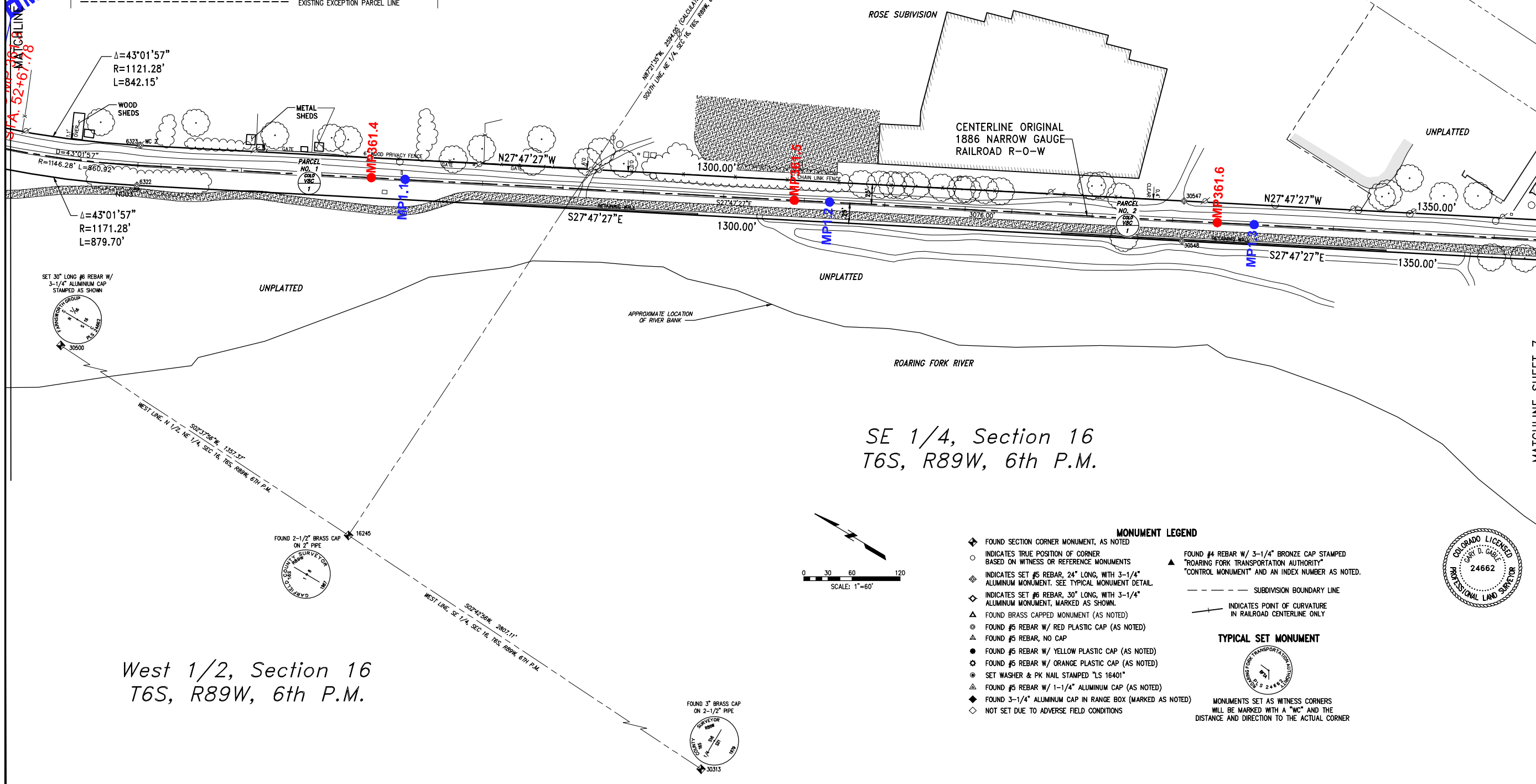
MATCHLINE SHEET 5
MP1.0

MATCHLINE SHEET 7

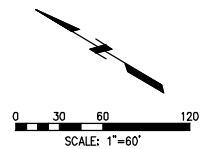
SE 1/4, Section 16
T6S, R89W, 6th P.M.

West 1/2, Section 16
T6S, R89W, 6th P.M.

Ref: Plan: \y\h\m\m\1 - \y\h\m\m\1.dwg
 11/14/2019 9:52 AM
 11/14/2019 9:52 AM
 - RFA Contract: 13-033 - Ro Grande Trail ROW from Development\Comp\Plan\MP 1-3007-Demo.dwg
 11/14/2019 9:52 AM



- MONUMENT LEGEND**
- ◆ FOUND SECTION CORNER MONUMENT, AS NOTED
 - INDICATES TRUE POSITION OF CORNER BASED ON WITNESS OR REFERENCE MONUMENTS
 - ◇ INDICATES SET #5 REBAR, 24" LONG, WITH 3-1/4" ALUMINUM MONUMENT. SEE TYPICAL MONUMENT DETAIL
 - ◇ INDICATES SET #6 REBAR, 30" LONG, WITH 3-1/4" ALUMINUM MONUMENT, MARKED AS SHOWN.
 - △ FOUND BRASS CAPPED MONUMENT (AS NOTED)
 - FOUND #5 REBAR W/ RED PLASTIC CAP (AS NOTED)
 - ▲ FOUND #5 REBAR, NO CAP
 - FOUND #5 REBAR W/ YELLOW PLASTIC CAP (AS NOTED)
 - FOUND #5 REBAR W/ ORANGE PLASTIC CAP (AS NOTED)
 - SET WASHER & PK NAIL STAMPED "LS 16401"
 - ▲ FOUND #5 REBAR W/ 1-1/4" ALUMINUM CAP (AS NOTED)
 - ◆ FOUND 3-1/4" ALUMINUM CAP IN RANGE BOX (MARKED AS NOTED)
 - ◇ NOT SET DUE TO ADVERSE FIELD CONDITIONS
- TYPICAL SET MONUMENT**
- MONUMENTS SET AS WITNESS CORNERS WILL BE MARKED WITH A "WC" AND THE DISTANCE AND DIRECTION TO THE ACTUAL CORNER



Railroad ROW Survey - Glenwood Springs Segment
 Portion of Former Denver & Rio Grande Railroad
 Aspen Branch Right-Of-Way
 Sections 9, 16, 21, 22
 Township 6 South, Range 89 West, 6th P.M.
 Garfield County, State of Colorado

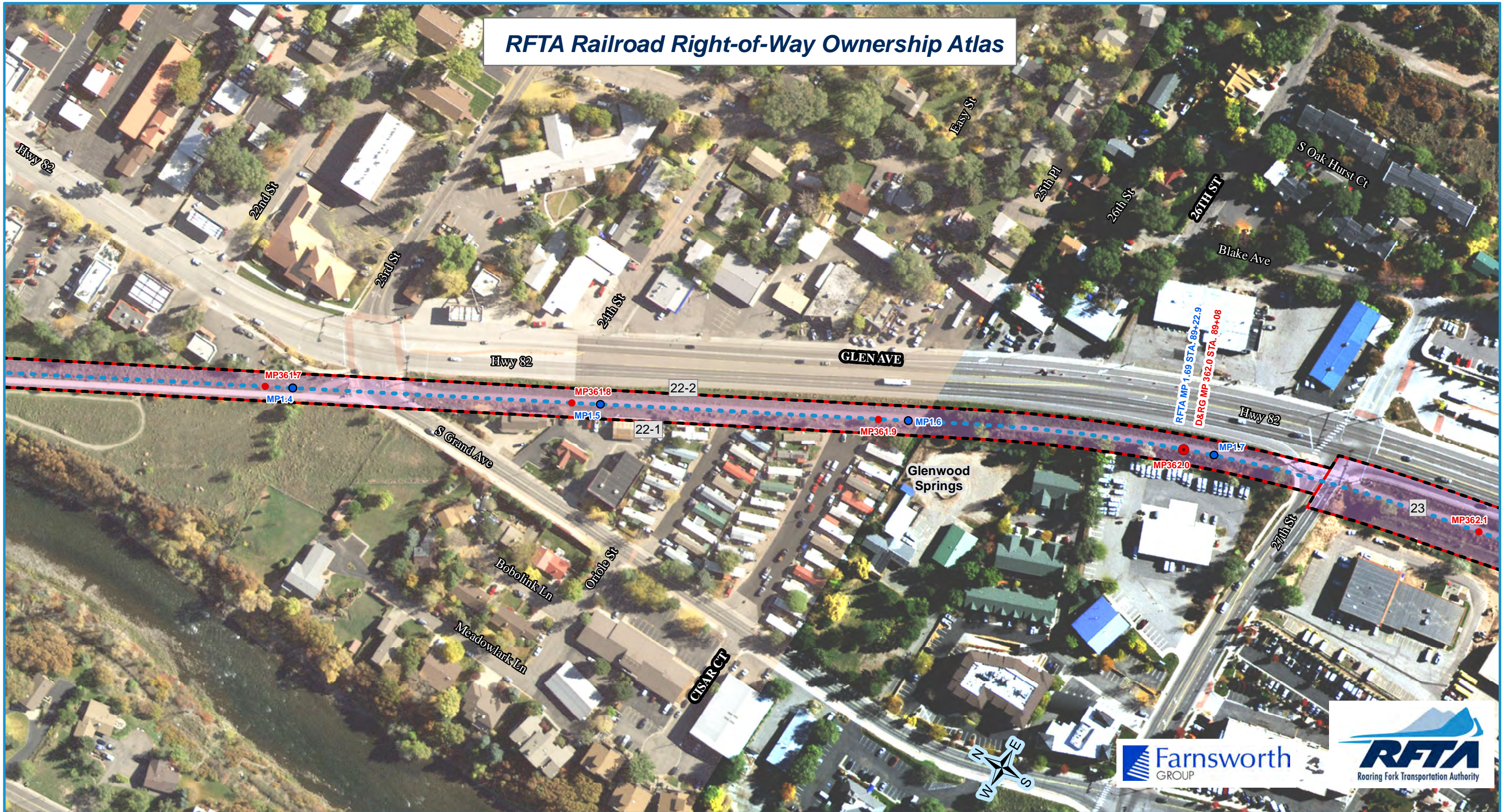
CLIENT: Roaring Fork Transportation Authority
 0766 Industry Way
 Carbondale, CO 81623
 Date: 8-03-07
 Drawn: MCG
 Checked: MCG
 Book No.: 2195

Farnsworth GROUP
 ENGINEERS ARCHITECTS SURVEYORS SCIENTISTS
 8055 EAST 11TH AVENUE, SUITE 800, DENVER, COLORADO 80237
 (303) 692-8837 / (303) 692-0070 Fax www.fw.com

Project No.: 305007.7
 SHEET 6 OF 10
 OVERALL SHEET 6 OF 126

ISSUE	Date	By	Description
1	8/03/07	MCG	ORIGINAL ISSUE
2	12/02/08	APF	REVISION FOR CORRECTION DEED

RFTA Railroad Right-of-Way Ownership Atlas



RFTA Mileposts
 ● Mile
 ● Tenth

D&RG Mileposts
 ● Mile
 ● Tenth
 ● Conservation Covenant Area Begin/End
 Conservation Covenant Area Hatch

● RFTA ROW Centerline
 - - RFTA ROW Line
 Parcel Division Lines
 Municipal Limits

Parcel - Type

4 - Adverse Possession	5 - Easement
1 - Grant	6 - Other
2 - Fee	

1 = Gov't Congressional Grant = Railroad Land Grant (Limited Fee or Fee Simple-Determinant)
 2 = Fee/Deeded
 4 = Prescriptive Right/Adverse Possession
 5 = Easement
 6 = Other (License, Contract, Permit, Ordinance, Court Decree, Charter, State PUC Decision [Administrative Law Decision] etc.)

Parcel Number Label: 68

Aerial background: Hexagon Valtus Aerial Imagery - 1 foot - Sept. 2017

1 inch = 160 feet

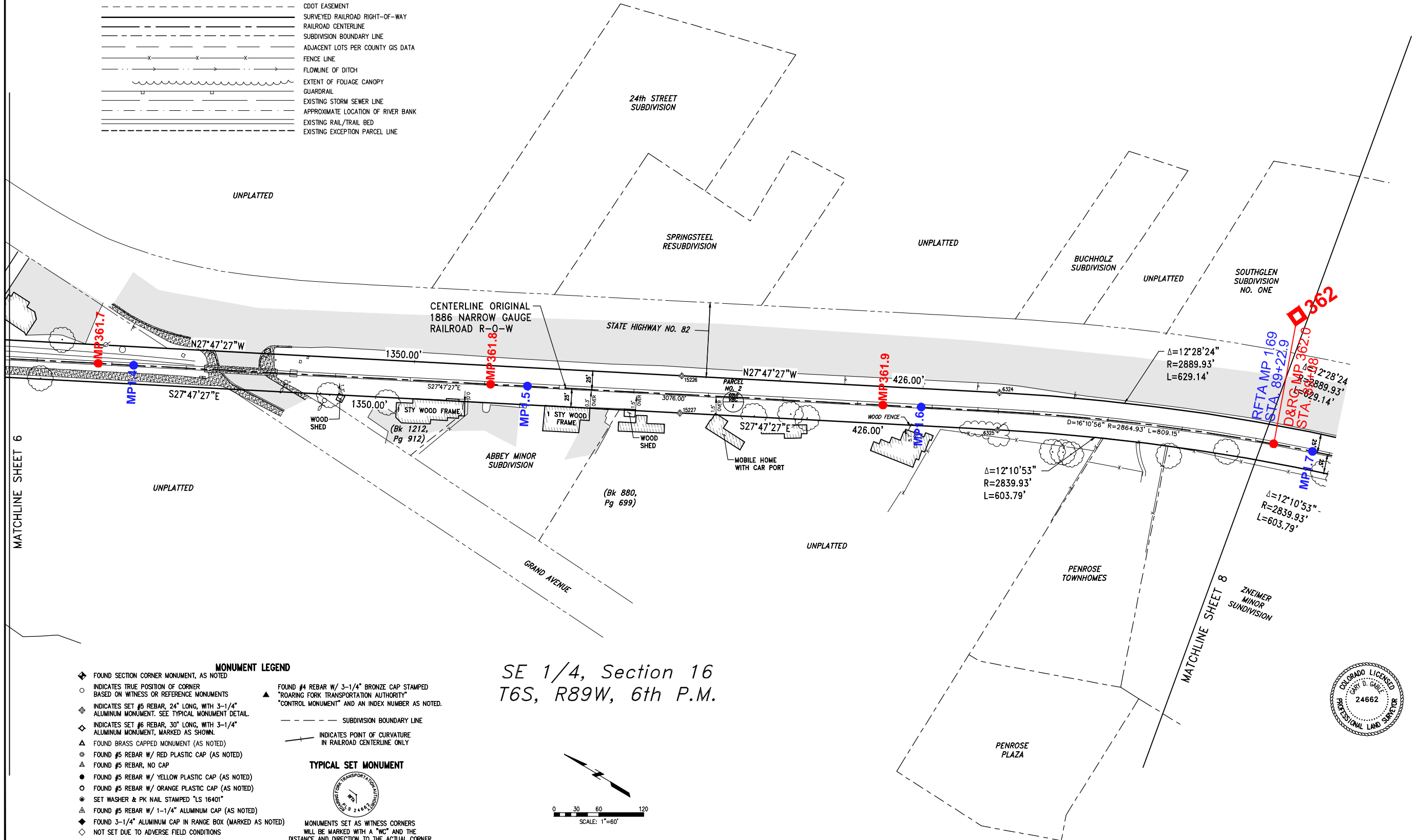
0 50 100 Feet

0 40 80 120 160 Feet

Rev. 1/8/2020

SYMBOL & LINETYPE LEGEND	
	UTILITY POLE
	PARKING LIGHT
	ASPHALT SURFACE
	EXISTING BUILDING
	EXISTING CONCRETE
	LAND CLAIM LINE
	GOVERNMENT LOT LINE
	APPROXIMATE HIGHWAY RIGHT-OF-WAY LINE
	CDOT EASEMENT
	SURVEYED RAILROAD RIGHT-OF-WAY
	RAILROAD CENTERLINE
	SUBDIVISION BOUNDARY LINE
	ADJACENT LOTS PER COUNTY GIS DATA
	FENCE LINE
	FLOWLINE OF DITCH
	EXTENT OF FOLIAGE CANOPY
	GUARDRAIL
	EXISTING STORM SEWER LINE
	APPROXIMATE LOCATION OF RIVER BANK
	EXISTING RAIL/TRAIL BED
	EXISTING EXCEPTION PARCEL LINE

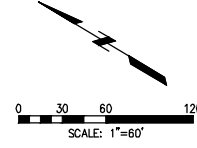
PARCEL NOTATION	
	L.C.C. D&R/W VALUATION SECTION
	MAP NUMBER



MONUMENT LEGEND	
	FOUND SECTION CORNER MONUMENT, AS NOTED
	INDICATES TRUE POSITION OF CORNER BASED ON WITNESS OR REFERENCE MONUMENTS
	INDICATES SET #5 REBAR, 24" LONG, WITH 3-1/4" ALUMINUM MONUMENT. SEE TYPICAL MONUMENT DETAIL.
	INDICATES SET #6 REBAR, 30" LONG, WITH 3-1/4" ALUMINUM MONUMENT, MARKED AS SHOWN.
	FOUND BRASS CAPPED MONUMENT (AS NOTED)
	FOUND #5 REBAR W/ RED PLASTIC CAP (AS NOTED)
	FOUND #5 REBAR, NO CAP
	FOUND #5 REBAR W/ YELLOW PLASTIC CAP (AS NOTED)
	FOUND #5 REBAR W/ ORANGE PLASTIC CAP (AS NOTED)
	SET WASHER & PK NAIL STAMPED "LS 16401"
	FOUND #5 REBAR W/ 1-1/4" ALUMINUM CAP (AS NOTED)
	FOUND 3-1/4" ALUMINUM CAP IN RANGE BOX (MARKED AS NOTED)
	NOT SET DUE TO ADVERSE FIELD CONDITIONS
	FOUND #4 REBAR W/ 3-1/4" BRONZE CAP STAMPED "ROARING FORK TRANSPORTATION AUTHORITY CONTROL MONUMENT" AND AN INDEX NUMBER AS NOTED.
	SUBDIVISION BOUNDARY LINE
	INDICATES POINT OF CURVATURE IN RAILROAD CENTERLINE ONLY

TYPICAL SET MONUMENT	
	MONUMENTS SET AS WITNESS CORNERS WILL BE MARKED WITH A "WC" AND THE DISTANCE AND DIRECTION TO THE ACTUAL CORNER

SE 1/4, Section 16
T6S, R89W, 6th P.M.



Vertical text on the left margin: "MATCHLINE SHEET 6" and project information including "Roaring Fork Transportation Authority" and "Aspen Branch Right-of-Way".

ISSUE	Date	By	Description
1	8/03/07	MCG	ORIGINAL ISSUE
2	12/02/08	APF	REVISION FOR CORRECTION DEED

Client: Roaring Fork Transportation Authority
 0766 Industry Way
 Carbondale, CO 81623

Date: 8-03-07
 Drawn: MCG
 Checked: MCG
 Book No.: 2195

Farnsworth GROUP
 ENGINEER, ARCHITECT, SURVEYOR, SCIENTIST
 8055 EAST TULIPS AVENUE, SUITE 800, DENVER, COLORADO 80237
 (303) 692-8857 / (303) 692-6070 Fax www.farnsworth.com

Railroad ROW Survey - Glenwood Springs Segment
 Portion of Former Denver & Rio Grande Railroad
 Aspen Branch Right-Of-Way
 Sections 9, 16, 21, 22
 Township 6 South, Range 89 West, 6th P.M.
 Garfield County, State of Colorado

Project No.: 305007.7
 SHEET 7 OF 10
 OVERALL SHEET 7 OF 126

RFTA Railroad Right-of-Way Ownership Atlas



- RFTA Mileposts**
- Mile
 - Tenth
- D&RG Mileposts**
- Mile
 - Tenth
 - Conservation Covenant Area Begin/End
- Conservation Covenant Area Hatch

- RFTA ROW Centerline
- - - RFTA ROW Line
- ▭ Parcel Division Lines
- ▭ Municipal Limits

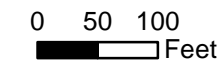
- Parcel - Type**
- | | | | |
|-------------|-----------|--------------------------|----------------|
| ■ 1 - Grant | ■ 2 - Fee | ■ 4 - Adverse Possession | ■ 5 - Easement |
| ■ 6 - Other | | | |

- 1 = Gov't Congressional Grant = Railroad Land Grant (Limited Fee or Fee Simple-Determinant)
 2 = Fee/Deeded
 4 = Prescriptive Right/Adverse Possession
 5 = Easement
 6 = Other (License, Contract, Permit, Ordinance, Court Decree, Charter, State PUC Decision [Administrative Law Decision] etc.)

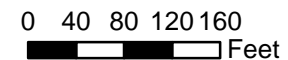
Parcel Number Label: 68

Aerial background: Hexagon Valtus Aerial Imagery - 1 foot - Sept. 2017

1 inch = 160 feet



0 120 Feet



Rev. 1/8/2020

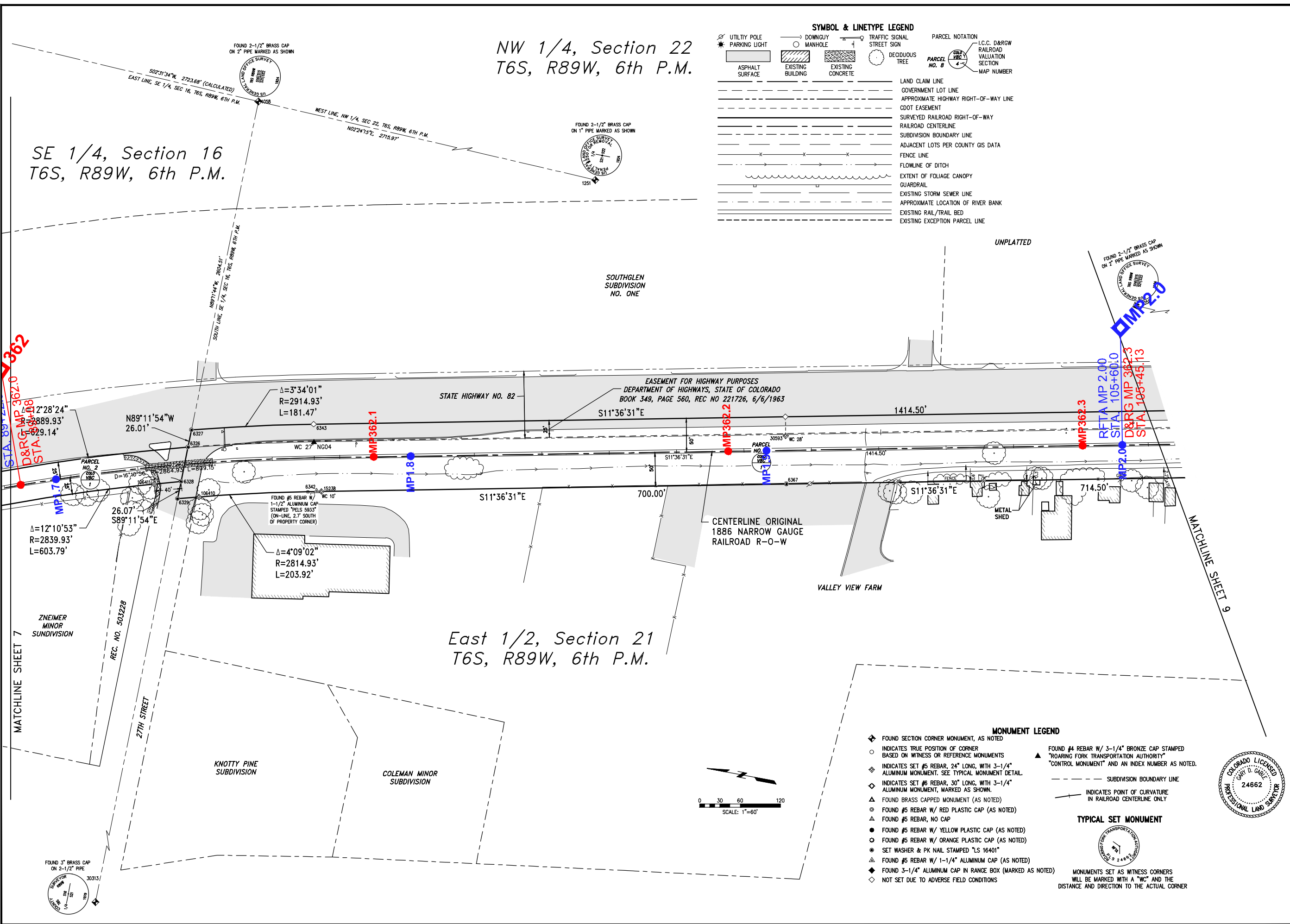


NW 1/4, Section 22
T6S, R89W, 6th P.M.

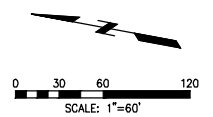
SE 1/4, Section 16
T6S, R89W, 6th P.M.

East 1/2, Section 21
T6S, R89W, 6th P.M.

SYMBOL & LINETYPE LEGEND	
	UTILITY POLE
	PARKING LIGHT
	ASPHALT SURFACE
	EXISTING BUILDING
	EXISTING CONCRETE
	DOWNGUY
	MANHOLE
	TRAFFIC SIGNAL
	STREET SIGN
	DECIDUOUS TREE
	PARCEL NOTATION
	L.C.C. D&RG RAILROAD VALUATION SECTION
	MAP NUMBER
	LAND CLAIM LINE
	GOVERNMENT LOT LINE
	APPROXIMATE HIGHWAY RIGHT-OF-WAY LINE
	CDOT EASEMENT
	SURVEYED RAILROAD RIGHT-OF-WAY
	RAILROAD CENTERLINE
	SUBDIVISION BOUNDARY LINE
	ADJACENT LOTS PER COUNTY GIS DATA
	FENCE LINE
	FLOWLINE OF DITCH
	EXTENT OF FOLIAGE CANOPY
	GUARDRAIL
	EXISTING STORM SEWER LINE
	APPROXIMATE LOCATION OF RIVER BANK
	EXISTING RAIL/TRAIL BED
	EXISTING EXCEPTION PARCEL LINE



- MONUMENT LEGEND**
- ◆ FOUND SECTION CORNER MONUMENT, AS NOTED
 - INDICATES TRUE POSITION OF CORNER BASED ON WITNESS OR REFERENCE MONUMENTS
 - ◆ INDICATES SET #5 REBAR, 24" LONG, WITH 3-1/4" ALUMINUM MONUMENT. SEE TYPICAL MONUMENT DETAIL.
 - ◆ INDICATES SET #6 REBAR, 30" LONG, WITH 3-1/4" ALUMINUM MONUMENT, MARKED AS SHOWN.
 - ▲ FOUND BRASS CAPPED MONUMENT (AS NOTED)
 - ▲ FOUND #5 REBAR W/ RED PLASTIC CAP (AS NOTED)
 - ▲ FOUND #5 REBAR, NO CAP
 - FOUND #5 REBAR W/ YELLOW PLASTIC CAP (AS NOTED)
 - FOUND #5 REBAR W/ ORANGE PLASTIC CAP (AS NOTED)
 - SET WASHER & PK NAIL STAMPED "LS 16401"
 - ◆ FOUND #5 REBAR W/ 1-1/4" ALUMINUM CAP (AS NOTED)
 - ◆ FOUND 3-1/4" ALUMINUM CAP IN RANGE BOX (MARKED AS NOTED)
 - ◇ NOT SET DUE TO ADVERSE FIELD CONDITIONS
 - ▲ FOUND #4 REBAR W/ 3-1/4" BRONZE CAP STAMPED "ROARING FORK TRANSPORTATION AUTHORITY" "CONTROL MONUMENT" AND AN INDEX NUMBER AS NOTED.
- SUBDIVISION BOUNDARY LINE
 --- INDICATES POINT OF CURVATURE IN RAILROAD CENTERLINE ONLY
- TYPICAL SET MONUMENT**
- MONUMENTS SET AS WITNESS CORNERS WILL BE MARKED WITH A "WC" AND THE DISTANCE AND DIRECTION TO THE ACTUAL CORNER



Farnsworth GROUP
 ENGINEERS, ARCHITECTS, SURVEYORS, SCIENTISTS
 8055 EAST TULIPS AVENUE, SUITE 800, DENVER, COLORADO 80237
 (303) 692-8837 / (303) 692-0470 Fax, www.fg.com

Roaring Fork Transportation Authority
 0766 Industry Way
 Carbondale, CO 81623

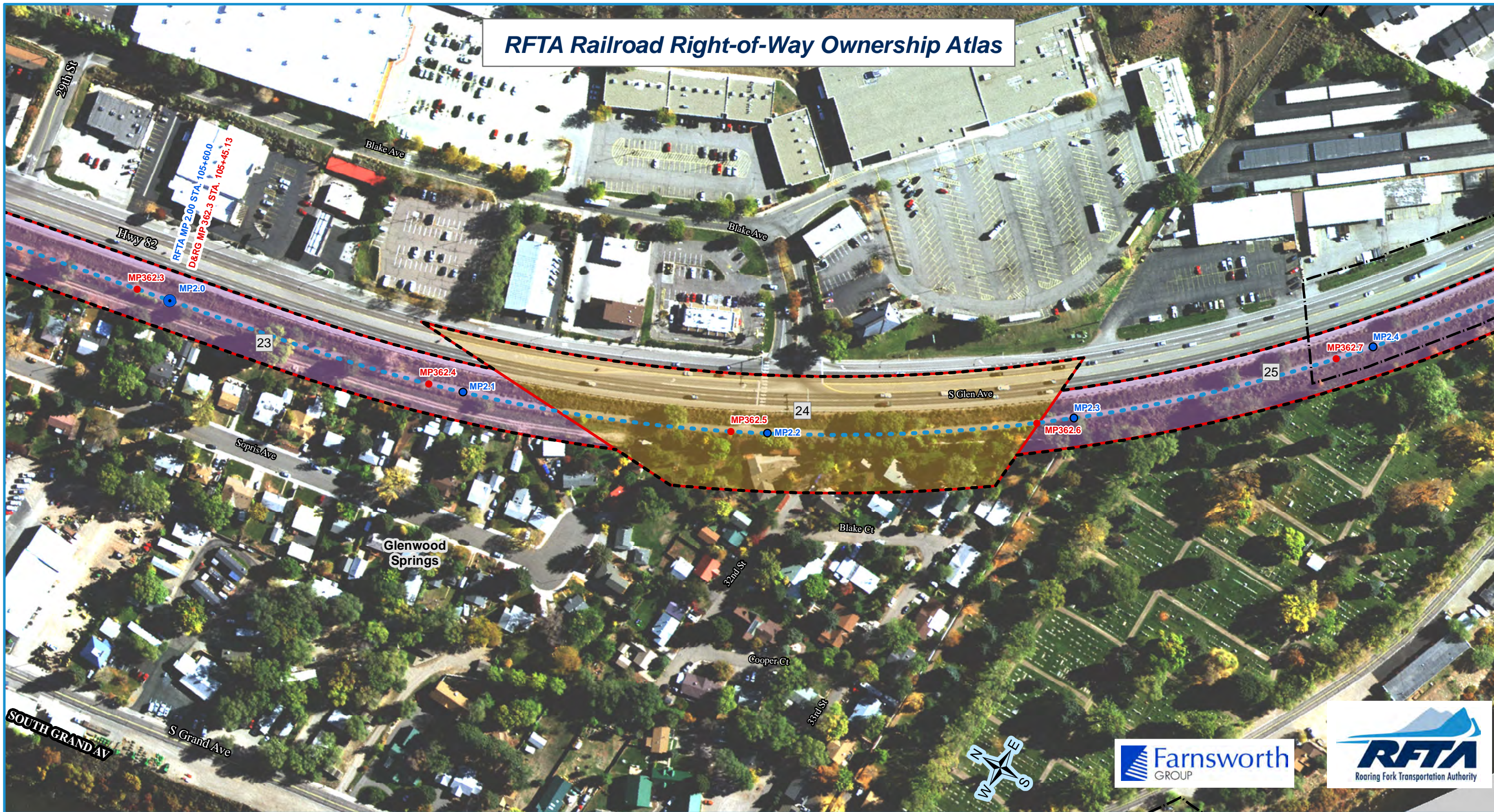
Railroad ROW Survey - Glenwood Springs Segment
 Portion of Former Denver & Rio Grande Railroad
 Aspen Branch Right-Of-Way
 Sections 9, 16, 21, 22
 Township 6 South, Range 89 West, 6th P.M.
 Garfield County, State of Colorado

Project No.: 305007.7
 SHEET 8 OF 10
 OVERALL SHEET 8 OF 126

Date: 8-03-07
 Drawn: MCG
 Checked: MCG
 Book No.: 2195

ISSUE: 1. 8/03/07 - MCG - ORIGINAL ISSUE
 2. 12/02/08 - AFP - REVISION FOR CORRECTION DEED

RFTA Railroad Right-of-Way Ownership Atlas



- RFTA Mileposts**
- Mile
 - Tenth
- D&RG Mileposts**
- Mile
 - Tenth
 - Conservation Covenant Area Begin/End
- Conservation Covenant Area Hatch

- RFTA ROW Centerline
- RFTA ROW Line
- Parcel Division Lines
- Municipal Limits

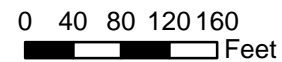
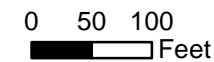
- Parcel - Type**
- 1 - Grant
 - 2 - Fee
 - 3 - Adverse Possession
 - 4 - Easement
 - 5 - Easement
 - 6 - Other

- 1 = Gov't Congressional Grant = Railroad Land Grant (Limited Fee or Fee Simple-Determinant)
- 2 = Fee/Deeded
- 4 = Prescriptive Right/Adverse Possession
- 5 = Easement
- 6 = Other (License, Contract, Permit, Ordinance, Court Decree, Charter, State PUC Decision [Administrative Law Decision] etc.)

Parcel Number Label: 68

Aerial background: Hexagon Valtus Aerial Imagery - 1 foot - Sept. 2017

1 inch = 160 feet



Rev. 1/8/2020

NW 1/4, Section 22
T6S, R89W, 6th P.M.

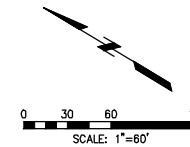
GLENWOOD
SHOPPING CENTER

MONUMENT LEGEND

- ◆ FOUND SECTION CORNER MONUMENT, AS NOTED
- INDICATES TRUE POSITION OF CORNER BASED ON WITNESS OR REFERENCE MONUMENTS
- ◆ INDICATES SET #5 REBAR, 24" LONG, WITH 3-1/4" ALUMINUM MONUMENT. SEE TYPICAL MONUMENT DETAIL.
- ◆ INDICATES SET #6 REBAR, 30" LONG, WITH 3-1/4" ALUMINUM MONUMENT, MARKED AS SHOWN.
- ▲ FOUND BRASS CAPPED MONUMENT (AS NOTED)
- FOUND #5 REBAR W/ RED PLASTIC CAP (AS NOTED)
- ▲ FOUND #5 REBAR, NO CAP
- FOUND #5 REBAR W/ YELLOW PLASTIC CAP (AS NOTED)
- FOUND #5 REBAR W/ ORANGE PLASTIC CAP (AS NOTED)
- SET WASHER & PK NAIL STAMPED "LS 16401"
- ▲ FOUND #5 REBAR W/ 1-1/4" ALUMINUM CAP (AS NOTED)
- ◆ FOUND 3-1/4" ALUMINUM CAP IN RANGE BOX (MARKED AS NOTED)
- ◇ NOT SET DUE TO ADVERSE FIELD CONDITIONS
- ▲ FOUND #4 REBAR W/ 3-1/4" BRONZE CAP STAMPED "ROARING FORK TRANSPORTATION AUTHORITY" "CONTROL MONUMENT" AND AN INDEX NUMBER AS NOTED.
- SUBDIVISION BOUNDARY LINE
- INDICATES POINT OF CURVATURE IN RAILROAD CENTERLINE ONLY

TYPICAL SET MONUMENT

MONUMENTS SET AS WITNESS CORNERS WILL BE MARKED WITH A "WC" AND THE DISTANCE AND DIRECTION TO THE ACTUAL CORNER



FOUND 2-1/2" BRASS CAP ON 2" PIPE MARKED AS SHOWN

FOUND 2-1/2" BRASS CAP ON 2" PIPE MARKED AS SHOWN

DM2.0

MATCHLINE SHEET 8

MATCHLINE SHEET 10

UNPLATTED

EASEMENT FOR HIGHWAY PURPOSES
DEPARTMENT OF HIGHWAYS, STATE OF COLORADO
BOOK 349, PAGE 560, REC NO 221726, 6/6/1963

EASEMENT FOR HIGHWAY PURPOSES
DEPARTMENT OF HIGHWAYS, STATE OF COLORADO
BOOK 349, PAGE 560, REC NO 221726, 6/6/1963

EASEMENT TO DONEL McQUAID
BOOK 260, PAGE 163, REC NO 177141, 9/17/1951

East 1/2, Section 21
T6S, R89W, 6th P.M.

West 1/2
SW 1/4, Section 22
T6S, R89W, 6th P.M.

SYMBOL & LINETYPE LEGEND	
	UTILITY POLE
	PARKING LIGHT
	ASPHALT SURFACE
	EXISTING BUILDING
	EXISTING CONCRETE
	LAND CLAIM LINE
	GOVERNMENT LOT LINE
	APPROXIMATE HIGHWAY RIGHT-OF-WAY LINE
	CDOT EASEMENT
	SURVEYED RAILROAD RIGHT-OF-WAY
	RAILROAD CENTERLINE
	SUBDIVISION BOUNDARY LINE
	ADJACENT LOTS PER COUNTY GIS DATA
	FENCE LINE
	FLOWLINE OF DITCH
	EXTENT OF FOLIAGE CANOPY
	GUARDRAIL
	EXISTING STORM SEWER LINE
	APPROXIMATE LOCATION OF RIVER BANK
	EXISTING RAIL/TRAIL BED
	EXISTING EXCEPTION PARCEL LINE

PARCEL NOTATION	
	I.C.C. D&RGW RAILROAD VALUATION SECTION
	MAP NUMBER



Project No.: 305007.7
 SHEET 9 OF 10
 OVERALL SHEET 9 OF 126

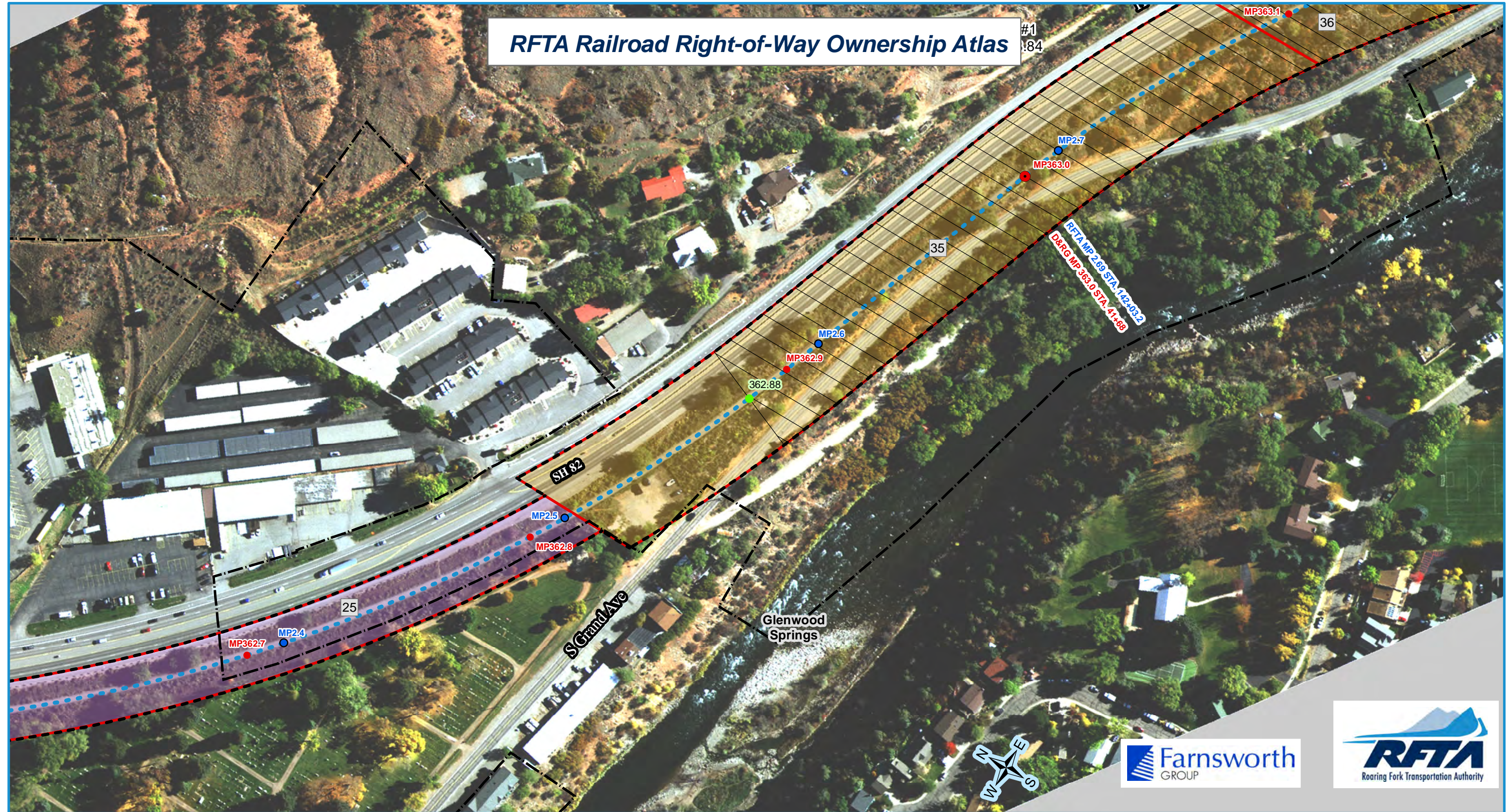
Farnsworth GROUP
 ENGINEER ARCHITECT SURVEYOR SCIENTIST
 8055 EAST TULSA AVENUE, SUITE 800, DENVER, COLORADO 80231
 (303) 692-8837 / (303) 692-0470 Fax www.farnsworth.com

CLIENT: Roaring Fork Transportation Authority
 0786 Industry Way
 Carbondale, CO 81623

Date: 8-03-07
 Drawn: MCG
 Checked: MCG
 Book No.: 2195

Project No.: 305007.7
 SHEET 9 OF 10
 OVERALL SHEET 9 OF 126

RFTA Railroad Right-of-Way Ownership Atlas



- RFTA Mileposts**
- Mile
 - Tenth
- D&RG Mileposts**
- Mile
 - Tenth
 - Conservation Covenant Area Begin/End
- Conservation Covenant Area Hatch

- RFTA ROW Centerline
- RFTA ROW Line
- ▭ Parcel Division Lines
- ▭ Municipal Limits

- Parcel - Type**
- Type**
- 1 - Grant
 - 2 - Fee
 - 3 - Adverse Possession
 - 4 - Adverse Possession
 - 5 - Easement
 - 6 - Other

- 1 = Gov't Congressional Grant = Railroad Land Grant (Limited Fee or Fee Simple-Determinant)
- 2 = Fee/Deeded
- 4 = Prescriptive Right/Adverse Possession
- 5 = Easement
- 6 = Other (License, Contract, Permit, Ordinance, Court Decree, Charter, State PUC Decision [Administrative Law Decision] etc.)

Parcel Number Label: 68

Aerial background: Hexagon Valtus Aerial Imagery - 1 foot - Sept. 2017

1 inch = 160 feet

0 50 100 Feet

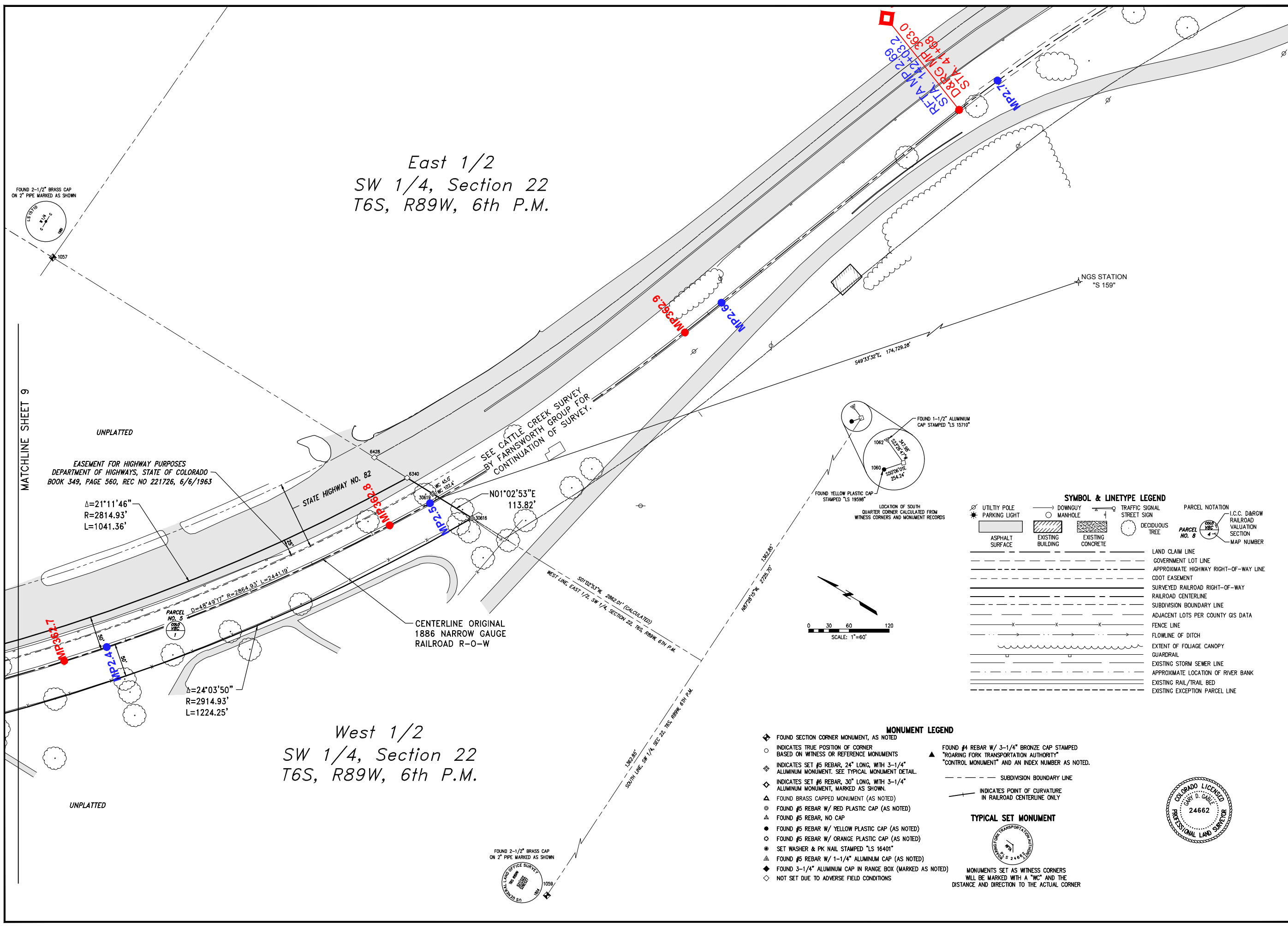
0 120 Feet

0 40 80 120 160 Feet

Rev. 1/8/2020



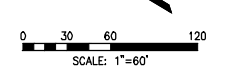
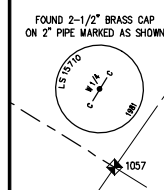
Ref: File: \\fhs-fs01\1\Projects\2025\25000 - RFA Contract 13-03 - Rio Grande Trail ROW for Development\Drawings\11/17/2025 9:56 AM
 11/17/2025 10:28:00 - RFA Contract 13-03 - Rio Grande Trail ROW for Development\Drawings\11/17/2025 9:56 AM



East 1/2
SW 1/4, Section 22
T6S, R89W, 6th P.M.

West 1/2
SW 1/4, Section 22
T6S, R89W, 6th P.M.

MATCHLINE SHEET 9



SYMBOL & LINETYPE LEGEND

	UTILITY POLE		DOWNGUY MANHOLE		TRAFFIC SIGNAL STREET SIGN	PARCEL NOTATION
	ASPHALT SURFACE		EXISTING BUILDING		EXISTING CONCRETE	
	DECIDUOUS TREE		LAND CLAIM LINE		GOVERNMENT LOT LINE	
	COOT EASEMENT		SURVEYED RAILROAD RIGHT-OF-WAY		RAILROAD CENTERLINE	
	SUBDIVISION BOUNDARY LINE		ADJACENT LOTS PER COUNTY GIS DATA		FENCE LINE	
	FLOWLINE OF DITCH		EXTENT OF FOLIAGE CANOPY		GUARDRAIL	
	EXISTING STORM SEWER LINE		APPROXIMATE LOCATION OF RIVER BANK		EXISTING RAIL/TRAIL BED	
	EXISTING EXCEPTION PARCEL LINE					

- MONUMENT LEGEND**
- ◆ FOUND SECTION CORNER MONUMENT, AS NOTED
 - INDICATES TRUE POSITION OF CORNER BASED ON WITNESS OR REFERENCE MONUMENTS
 - ◇ INDICATES SET #5 REBAR, 24" LONG, WITH 3-1/4" ALUMINUM MONUMENT. SEE TYPICAL MONUMENT DETAIL.
 - ◇ INDICATES SET #6 REBAR, 30" LONG, WITH 3-1/4" ALUMINUM MONUMENT, MARKED AS SHOWN.
 - ▲ FOUND BRASS CAPPED MONUMENT (AS NOTED)
 - FOUND #5 REBAR W/ RED PLASTIC CAP (AS NOTED)
 - ▲ FOUND #5 REBAR, NO CAP
 - FOUND #5 REBAR W/ YELLOW PLASTIC CAP (AS NOTED)
 - FOUND #5 REBAR W/ ORANGE PLASTIC CAP (AS NOTED)
 - SET WASHER & PK NAIL STAMPED "LS 16401"
 - ▲ FOUND #5 REBAR W/ 1-1/4" ALUMINUM CAP (AS NOTED)
 - ◆ FOUND 3-1/4" ALUMINUM CAP IN RANGE BOX (MARKED AS NOTED)
 - ◇ NOT SET DUE TO ADVERSE FIELD CONDITIONS

- ▲ FOUND #4 REBAR W/ 3-1/4" BRONZE CAP STAMPED "ROARING FORK TRANSPORTATION AUTHORITY" "CONTROL MONUMENT" AND AN INDEX NUMBER AS NOTED.
 - SUBDIVISION BOUNDARY LINE
 - INDICATES POINT OF CURVATURE IN RAILROAD CENTERLINE ONLY
- TYPICAL SET MONUMENT**
-
- MONUMENTS SET AS WITNESS CORNERS WILL BE MARKED WITH A "WC" AND THE DISTANCE AND DIRECTION TO THE ACTUAL CORNER



Railroad ROW Survey - Glenwood Springs Segment
 Portion of Former Denver & Rio Grande Railroad
 Aspen Branch Right-Of-Way
 Sections 9, 16, 21, 22
 Township 6 South, Range 89 West, 6th P.M.
 Garfield County, State of Colorado

Farnsworth GROUP
 ENGINEERS, ARCHITECTS, SURVEYORS, SCIENTISTS
 8055 EAST TULIPS AVENUE, SUITE 800, DENVER, COLORADO 80237
 (303) 692-8887 / (303) 692-0470 Fax www.farnsworthgroup.com

CLIENT: Roaring Fork Transportation Authority
 0766 Industry Way
 Carbondale, CO 81623

DATE: 8-03-07
DRAWN: MCG
CHECKED: MCG
BOOK NO.: 2195

ISSUE:
 1. 8/03/07 - MCG - ORIGINAL ISSUE
 2. 12/02/08 - AEP - REVISION FOR CORRECTION DEED

Project No.: 305007.7
 SHEET 10 OF 10
 OVERALL SHEET 10 OF 126